

Rail Coach Factory, Kapurthala

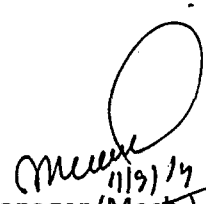
MD21561

Dated: 11.09.2014

Sub: Coach Alteration Instructions for Non AC Hybrid Coaches.**Ref:** RDSO Letter No. SV. Bogie Crack, dated: 27.08.2014.

- | | |
|----------------------------|---|
| 1. CAI No. | CAI/RCF/MECH/CONV/104 |
| 2. Group | Bogie Frame for non AC Hybrid Coaches |
| 3. Description | Strengthening of Bogie Frame |
| 4. Drawing No. | MI006349 (Enclosed) |
| 5. Modification | Strengthening of Bogie Side Frame near Suspension Strap |
| 6. Reason for Modification | To avoid Cracking of bogie frame |
| 7. Coaches Concerned | Non AC Hybrid Coaches |
| 8. Implementation stage | As early as possible |

Encls: Drawing No. MI006349


For General Manager (Mech.)
RCF, Kapurthala

o/c

Chief Mechanical Engineers

1. Central Railway, Mumbai CST ✓ — 400001
2. W. Railway Churchgate, Mumbai ✓ — 400020
- ✓ 3. Northern Railway, Baroda House, New Delhi — 110001
- ✓ 4. N.E. Railway Gorakhpur — 273002
- ✓ 5. N.F. Railway Maligaon, Guwahati — 781011
- ✓ 6. S. Railway, Park Town, Chennai — 600003
- ✓ 7. S. C. Railway, Rail Nilayam, Secunderabad — 500071
- ✓ 8. S. E. Railway, Garden Reach, Calcutta — 700043
- ✓ 9. Eastern Railway, Fairlie Place, Calcutta — 700001
- ✓ 10. E. C. Railway, Bhubhaneswar — 751016
- ✓ 11. North Central Railway, Allahabad — 211001
- ✓ 12. North West Railway, Jaipur — 302006
- ✓ 13. S. E. Central Railway, Bilaspur — 495004
- ✓ 14. S. W. Railway, Hubli — 580023
- ✓ 15. West Central Railway, Jabalpur — 482001
- ✓ 16. East Central Railway, Hazipur — 844101

Chief Workshop Manager

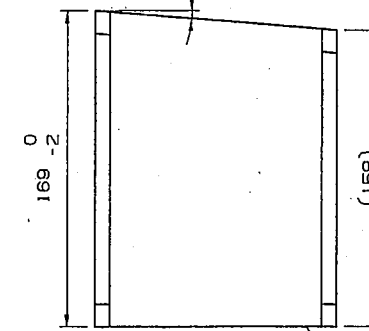
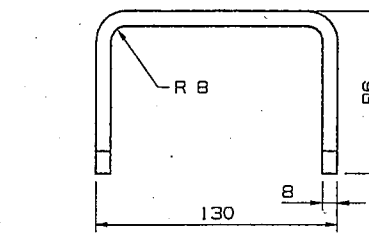
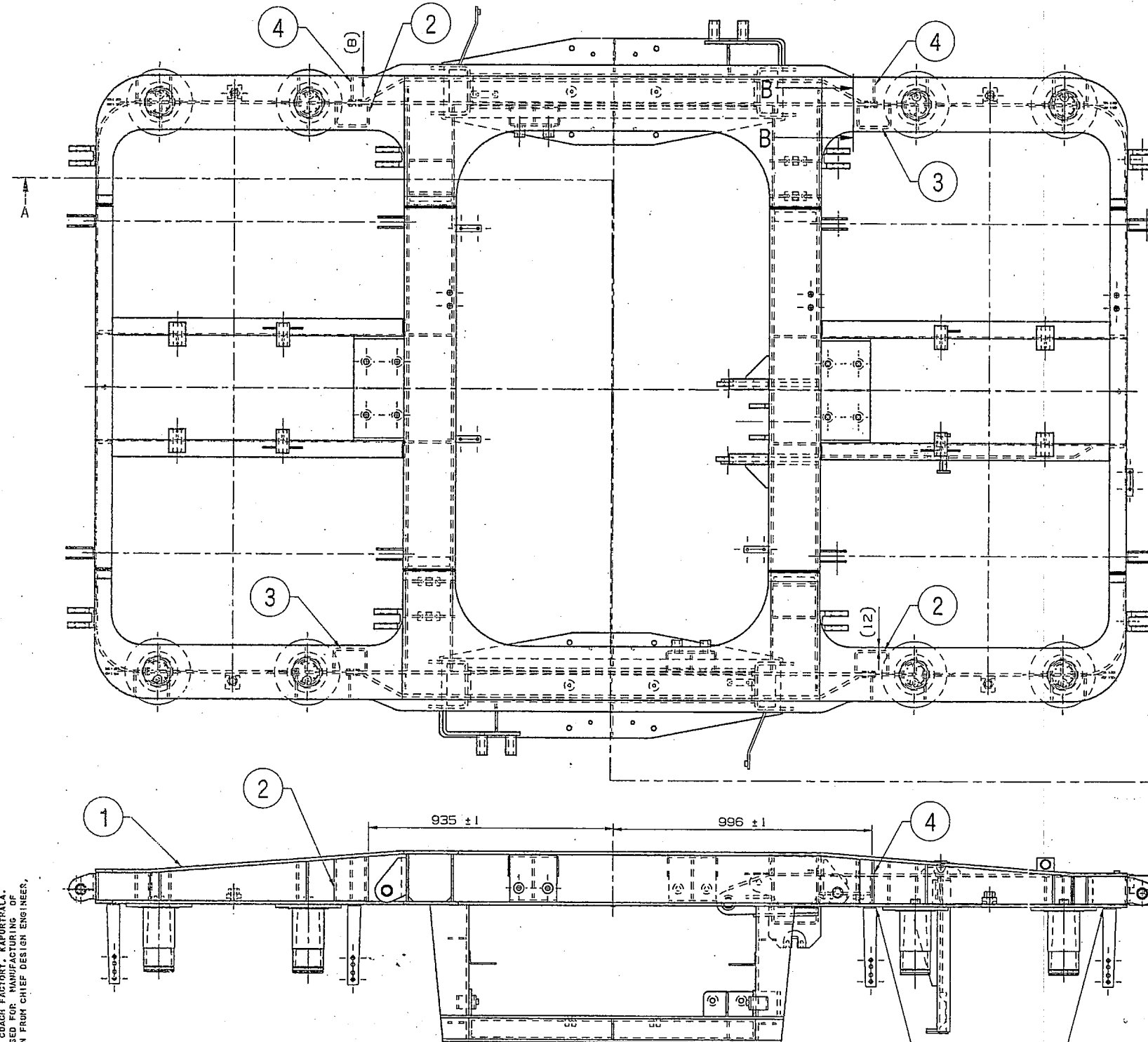
- ✓ 1. Central Railway, Matunga, Mumbai — 400015
- ✓ 2. Central Railway, Bhopal — 462001 — M. P.
- ✓ 3. Eastern Railway, Lilluah, Howrah — 711204 *W. Bengal*
- ✓ 4. Northern Railway, Alambagh Lucknow — 226005 — U. P.
- ✓ 5. Northern Railway, Jagadhari — 135003 — *Haryana*
- ✓ 6. N. E. Railway, Gorakhpur — 273012 — U. P.
- ✓ 7. N. F. Railway, New Bongaigaon — 119801 *ASSAM*
- ✓ 8. Southern Railway, Perambur, Chennai — 600011 — *TAMILNADU*
- ✓ 9. Southern Railway, Golden Rock, Trichy * *TARUCHIRAPPALLI* — 620004
- ✓ 10. Southern Railway, Ashokpuram, Mysore South — 570008 — *Karnataka*
- ✓ 11. S. C. Railway Lallagudda, Secunderabad — 500017
- ✓ 12. S. C. Railway, Hubli — 580020
- ✓ 13. S. C. Railway, Tirupati — 517506
- ✓ 14. S. E. Railway, Mancheswar, Bhubhaneswar — 751017
- ✓ 15. S. E. Railway, Kharagpur — 721301
- ✓ 16. Western Railway, Lower Parel, Mumbai — 400013
- ✓ 17. Western Railway, Ajmer, Rajasthan — *N/Western* — 302017
- ✓ 18. Eastern Railway, Kanchrupara, West Bengal — 743145

For kind information to:

- ✓ I. EDME/Coaching, Railway Board, New Delhi — 110002
- ✓ II. EDME(W), Railway Board, New Delhi — 110002
- ✓ III. ED/Carriage, RDSO, Manak Nagar, Lucknow — 226011
- ✓ IV. The General Manager (Mech.). ICF, Chennai — 600038

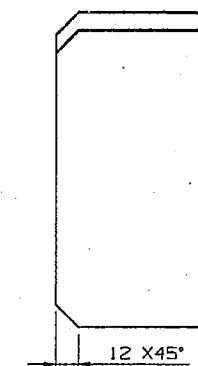
o/c
Reviewed
37
17/9/14

ALT. NO.	ALT. DATE	ZONE	ALTERATIONS	AUTHORITY
NIL	NIL	NIL	NIL	NIL



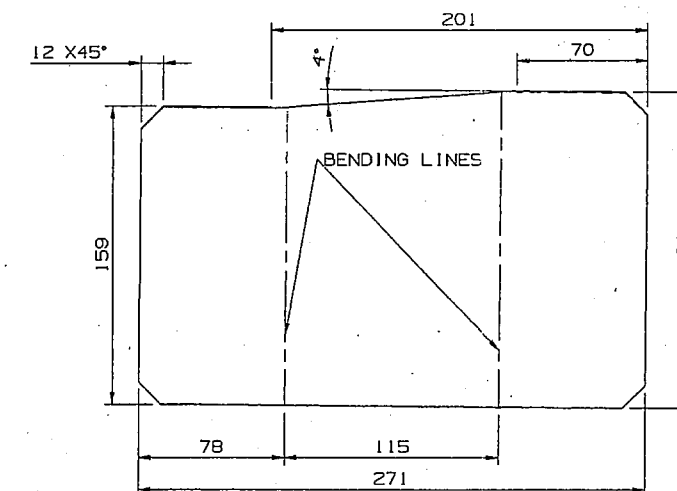
SCALE 1:2

2,3



SCALE 1:2

4

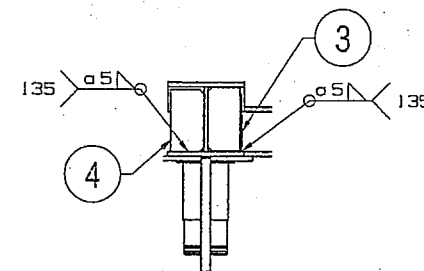


SCALE 1:2

DEVELOPED VIEW FOR ITEM-2 & 3

SECTION A-A
SCALE 1:10

SUSPENSION STRAP DO NOT WELD INSIDE



SECTION B-B

NOTE:- BENDING TO ITEM-3 AS SHOWN AND OPPOSITE FOR ITEM-2.

THIS DRAWING IS THE INTELLECTUAL PROPERTY OF RAIL COACH FACTORY, KAPURTHALA. THIS DRAWING SHOULD NOT BE REPRODUCED, ALTERED, USED FOR MANUFACTURING OF COMPONENTS, SOLD OR TRANSFERRED WITHOUT PERMISSION FROM CHIEF DESIGN ENGINEER, RAIL COACH FACTORY, KAPURTHALA.

ANY MANUAL ALTERATION SHALL AUTOMATICALLY RENDER THIS DRAWING INVALID.

DETAIL DRGS STARTING WITH "LI" ARE INTERNAL REFERENCE LISTS ONLY AND ARE NOT FOR ISSUE.

FOR UNTOLERANCED DIMENSIONS REFER MDG0008

DATE OF FIRST ISSUE

09/09/2014

CGM BY

4	RIB 8X90X164	4	NIL	IS: 2052-2011 E410 C	NIL								
3	CHANNEL R.H. 8X169X271	2	NIL	IS: 2052-2011 E410 C	NIL								
2	CHANNEL L.H. 8X169X271	2	NIL	IS: 2052-2011 E410 C	NIL								
1	BOGIE FRAME ARRET.	1	CA03105	NIL	NIL								
WELD LENGTH		ITEM		DESCRIPTION & DIMENSIONS		DIPASSLY		DETAIL DRG		MTRL. & SPEC.		REMARKS	
3.800		M		GROUP		BOGIE FRAME ARRANGEMENT		SUPERSEDES:		NIL			
WEIGHT		FILE		\\Hs022\bogie\wpdg\mi006349.prt (3D)									
MODIFIED 13T AIR SPRING BOGIE													
FRAME ARRANGEMENT ROLLED SECTION													
WITH BMBC													
RAIL COACH FACTORY, KAPURTHALA													
REF. DRG. NIL													
PL NO. NIL													
DRG. NO. MI006349													
ALT. NIL (SIZE: A SHEET 1/1)													

वर्क/ड्रॉ
Entered
ने
Into
ड्रॉइंग में
Date Bar:

12 SEP 2014