

TRAIN WARNING SYSTEM FOR UNMANNED LEVEL CROSSING GATE



SITE DETAILS

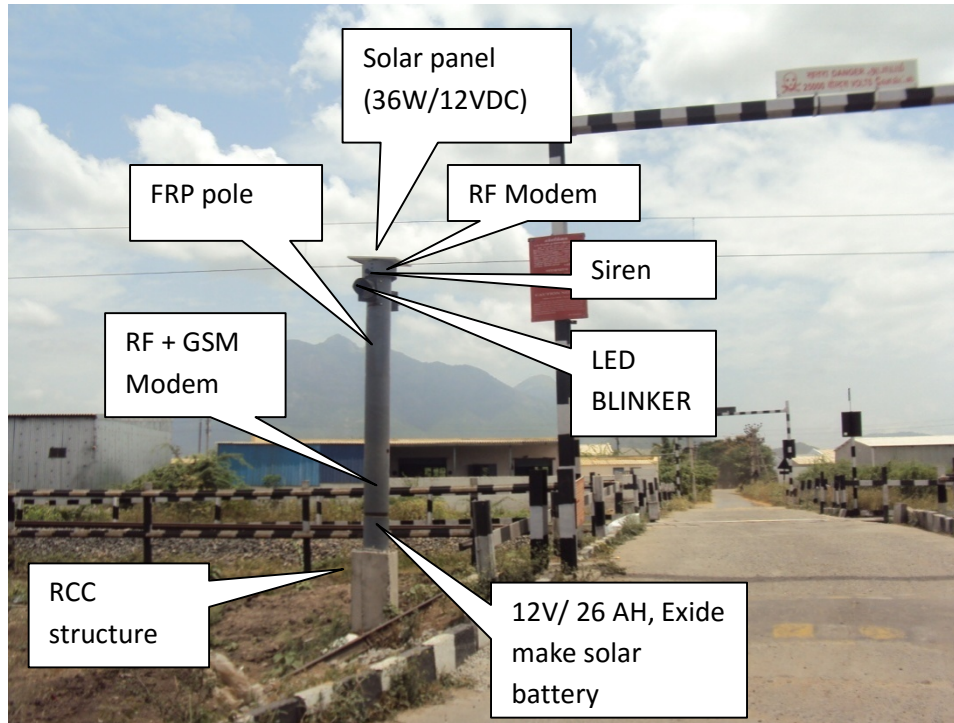
- GATE NAME : LC-6 (UNMANNED LEVEL CROSSING)
- LOCATION : BETWEEN CBE – MTP (NEAR IDIKARAI ROAD, GAS COMPANY, COIMBATORE- 641020).

SYSTEM MODULES:

SYSTEM HAS THREE MODULES VIZ,

- CONTROL MODULE – 1 NO
- SENSOR MODULE – 2 NOS

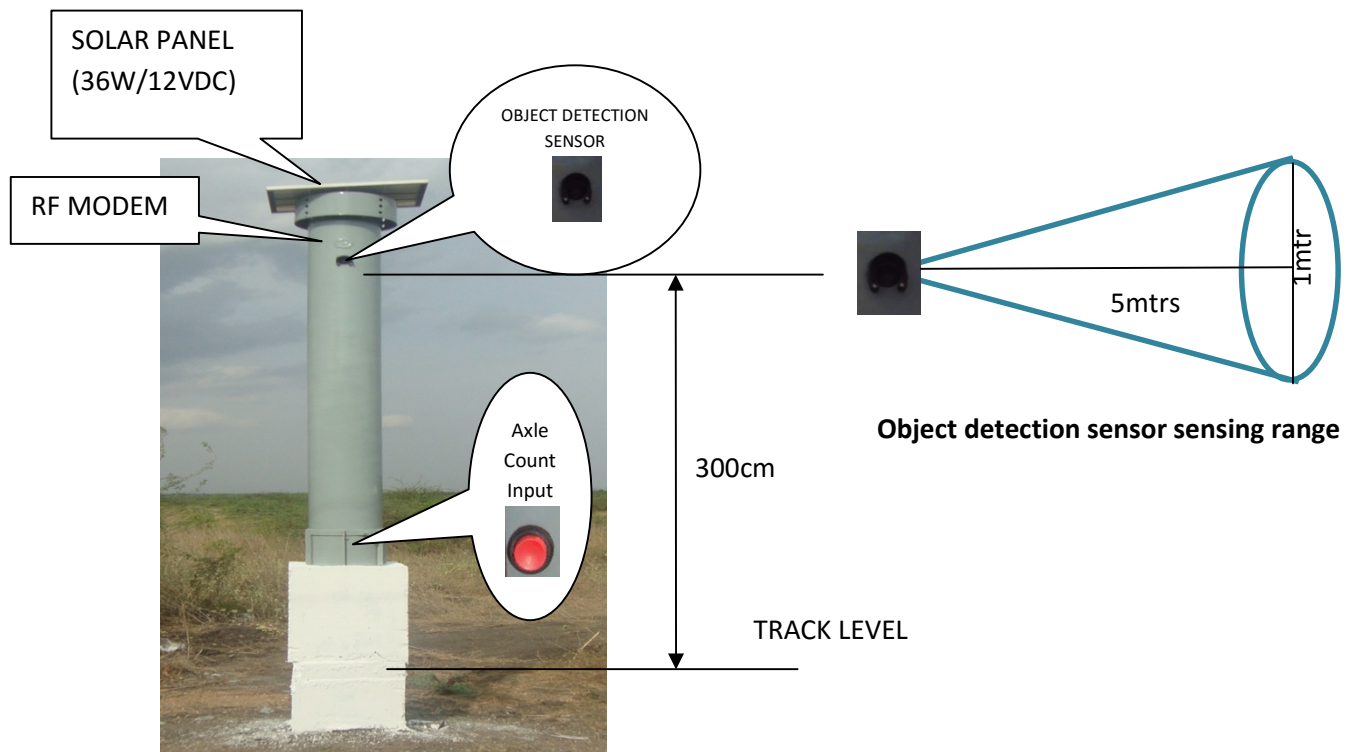
CONTROL MODULE:



Control module is located near unmanned level crossing gate. It has two blinkers and one siren to alert the trespassers, when train is within 1km radius from level crossing. For distance more than 1 Km repeaters may be used at alternate 1 Km distance. Control module is mounted on RCC structure for stable mounting.

It has theft protection system for system elements viz., solar panel, battery, etc., for both control and sensor modules. During theft in control module / sensor module, alert SMS is being sent to pre programmed mobile numbers.

SENSOR MODULE 1 & SENSOR MODULE 2:



These two sensor modules are located 1km distance from the level crossing. Each sensor module has 1 object detection sensor and 1 potential free axle count trigger input to detect the train per track. For larger distance & reliable coverage repeaters may be used at strategic locations.

Salient features of product:

- ✓ Communication through RF link
- ✓ The trains movements are detected by the sensor module and siren and blinker alert are produced in the control module when the train is within 1 KM from LC.
- ✓ During entry & exit train engine is detected by the sensor module.
- ✓ Theft alert SMS to programmed mobile numbers
- ✓ Provision for sending of Train crossing alert SMS to pre programmed mobile numbers
- ✓ Product has nuisance free operation. Even if The sensor is covered / blocked with metallic sheet no adverse performance.

Address of source for supply

M/s SAFECONNECT COMMUNICATION (INDIA) PRIVATE LIMITED

502/503, Kamla Hub Plot No. 53, CTS No. 484 , NS Road No.1,

Near Costa Coffee, JVPD Scheme Ville Parle West

Mumbai 400 049.

Ph. 022-26709552 / 26709556 Mob. 09769511175

Email : safeconnectsneha@gmail.com / info@safeconnect.com