

1.0 Introduction

A device required for performing of all types of technical or engineering work is called tool.

A work can not be completed properly and speedy with out using proper tool. The output and efficiency of an artisan staff can be increase by use of modern tools. The modern tools are available in the market to suit the specific requirement and this can be immense help in improving the productivity of artisan staff.

This handbook covers the modern tools and equipment for telecommunication discipline based on their usefulness. Owing to time constraints and other limitations CAMTECH could locate only limited manufacturers/suppliers. As such, the list of manufacturers/suppliers indicated for any tool provided in the handbook is in no way exhaustive and the Railways/ Indenters / Users/ are free to explore for the availability of more manufacturers/suppliers in the open market.

The budgetary estimated cost for the tools is subjected to variation on account of market factors and / or number of units purchased.

2.0 Conventional Tools

2.1 Tool Kit With Cable Joiner

| Sr. | Description of Tool | Recommended Modern tool | Page No. |
|-----|---------------------------|---|----------|
| 1. | Crowbar | | |
| 2. | Pick Axes | | |
| 3. | Phowras | | |
| 4. | Tent(complete) | | |
| 5. | Meggar, 500V | | |
| 6. | Tool Box | | |
| 7. | Hack Saw Blade | | |
| 8. | Hack Saw Frame Adjustable | | |
| 9. | Cutting Plier | | |
| 10. | Long Nose Plier | | |
| 11. | Flat Nose Plier | | |
| 12. | Wire Nipper | Wire stripper | 11 |
| 13. | Hack Knife | | |
| 14. | Clasp Knife | | |
| 15. | File Rasp | | |
| 16. | File (Triangular) | | |
| 17. | File Flat | | |
| 18. | Screw driver set | Screw driver bit set Elect. Screw driver | 34 18 |
| 19. | Hammer Large | | |
| 20. | Hammer Small | | |
| 21. | Chisel | | |
| 22. | Adjustable spanner | | |
| 23. | Dividers | | |
| 24. | Shave hock | | |
| 25. | Blow lamp | | |
| 26. | Mirror | | |
| 27. | Brush | | |
| 28. | Wooden Mallet | | |
| 29. | Thermometer | | |
| 30. | Soldering iron | | |
| 31. | Measuring tape | Digital range finder | 25 |
| 32. | Tinman Scissors | | |
| 33. | Bucket | | |
| 34. | Rope Manila | | |

2.2 Tool With Carpenter

| Sr. | Description of Tool | Recommended Modern tool | Page No. |
|-----|---------------------|-------------------------|----------|
| 1. | Hand Saw | All purpose Saw | 27 |
| 2. | Trying Angle | | |

| | | | |
|-----|----------------|---------------------|----|
| 3. | Trying Plane | Plainer | 28 |
| 4. | Jack Plane | Plainer | 28 |
| 5. | Measuring Tape | Digital Rangefinder | 25 |
| 6. | Anvil | | |
| 7. | Auger | | |
| 8. | Burmy | Portable Drill M/C | 30 |
| 9. | Gilmet | DC operated Drill | 29 |
| 10. | File | | |
| 11. | Adge | | |
| 12. | Punch | | |
| 13. | Vice | | |

2.3. Tools With Telecom. Maintainer

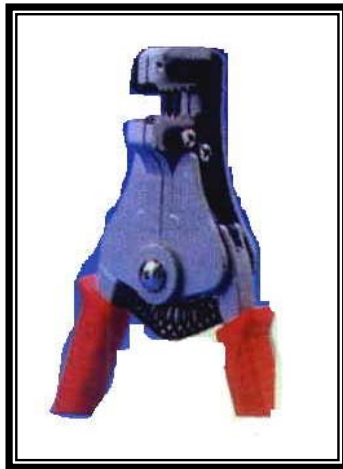
| Sr. | Description of Tool | Recommended Modern tool | Page No. |
|-----|------------------------|-------------------------|----------|
| 1. | Axe | Tree cutting M/C | 32 |
| 2. | Manila rope | | |
| 3. | Block & Tackle | | |
| 4. | Tensioning Dynamometer | | |
| 5. | Rope stop | | |
| 6. | Double ended spanner | | |
| 7. | Adjustable wrench | | |
| 8. | Cutting pliers | | |
| 9. | Long nose Plier | | |
| 10. | Stripping rollers | | |
| 11. | Crimper | Crimping tool | 07 |

| | | | |
|-----|------------------|--|----------------|
| 12. | Cable Cutter | Cable cutter Cable tie tensioning tool | 08 16 |
| 13. | Sleeve twister | | |
| 14. | Compression tool | | |
| 15. | Binding tool | | |
| 16. | Emery paper | | |
| 17. | Eye bolt | | |
| 18. | Soldering iron | Soldering station | 13 |
| 19. | Blow lamp | | |
| 20. | Wire brush | | |
| 21. | Stiff brush | | |
| 22. | Painting brush | | |
| 23. | Measuring tape | Digital range finder | 25 |
| 24. | Ladder | | |
| 25. | Bill hook | | |
| 26. | Megger | | |
| 27. | TMS Kit | | |
| 28. | Multimeter | Auto ranging multimeter Digital Clamp meter | 21 23 |
| 29. | Screw driver set | Screw driver bit set Elect.screw driver | 34 18 |
| 30. | Nose Plier | | |
| 31. | Heavy duty Plier | Grip Plier | 09 |
| 32. | Wire stripper | Stripping Plier Coaxial cable stripper Wire stripper | 06 10 11 |

| | | | |
|-----|------------|-----------------------------------|----|
| 33. | Hydrometer | | |
| 34. | Tool bag | | |
| 35. | Crone tool | Punch down tool | 12 |
| 36. | Cleaver | Fibre optic Cleaver & Stripper | 15 |

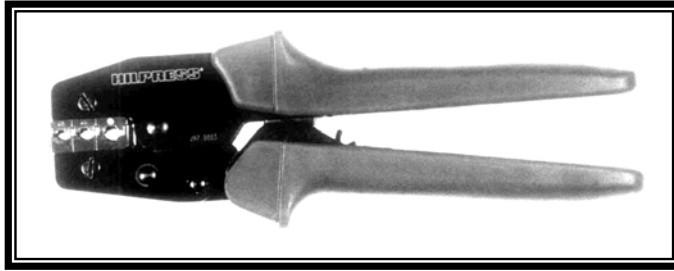
3. Modern – Tools

3.1. Stripping Plier



Name : Stripping Plier
Application : Removing of conductor insulation for termination.
Make : M/s AVEN, Item No. : 10.105
Model No. : 10.105
Budgetary Estimated cost : Rs.900/-
Source of supplier : Sold and serviced by Sumitron Exports Pvt. Ltd. P.O. Box 10227, Naraina Phase I, New Delhi 28

3.2 Crimping Tool



Name : Crimping Tool
Application : Crimping of wires.
Make : HIL PRESH
Article No. : 11731
Specification :

Crimping range 0.5 - 1.5mm²
 1.5 - 2.5mm²
 4.0 - 6.0mm²

Budgetary Estimated cost : Rs. 6,500/-

Source of supply : Sold and serviced by
 M/s Sumitron exports Pvt. Ltd.
 P.O. Box 10227, Naraina
 Phase - I, New Delhi - 110 028

3.3 Cable Cutter



Name : Cable cutter for copper and aluminium cables.

Application : Cuts the copper and aluminium cables

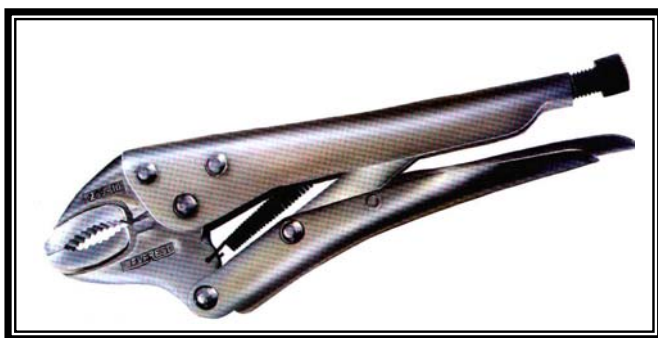
Make/Model : Hilpress/Article No. 11860

Specification : Cutting Range : 400mm²
Max Outside Dia : 52mm
Weight : 0.830kg
Length : 280mm

Budgetary Estimated cost : Rs.250.00

Source of Supply : M/S Sumitron Exports Pvt. Ltd.
P.O. Box 10227, Naraina
Phase I, New Delhi - 110 028

3.4 Grip Pliers



Name : Grip Plier

Application : For tightening and loosening of nuts & bolts.

Make/Model : EVEREST/Article No. 266

Specification : Based on IS 10372, Federal GGG-00649(GSA-FSS)

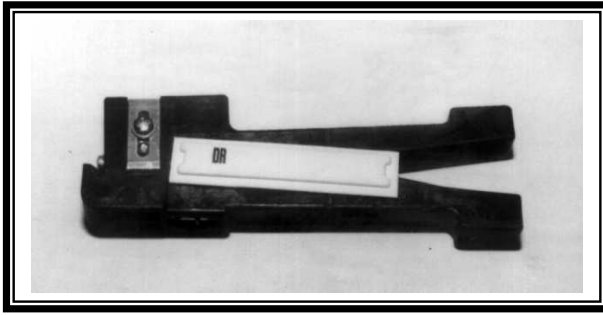
W-

| | | |
|------------|-------|--------|
| Stock No. | 266-7 | 266-10 |
| Length MM | 175 | 250 |
| Weight GMS | 235 | 470 |

BUDGETARY ESTIMATED COST : Rs. 550.00

SOURCE OF SUPPLY : M/S HINDUSTAN EVEREST TOOLS LIMITED, DOHIL CHAMBERS, 46, NEHRU PLACE< NEW DELHI 19.

3.5 Coaxial Cable Stripper



Name : Coaxial cable stripper

Application : Removing of insulation of coaxial cable

Make/ Model : IDEAL/45-162,45-163,45-164 & 45-165

Specification :

| Model no. | Description | Metric | Blades |
|-----------|------------------------------------|----------------|----------|
| 45-162 | For cable up to 1/8" dia | Up to 3.2 mm | L - 9225 |
| 45-163 | For cable up to 1/8 to 1/4" dia | 3.2. to 6.4 mm | L – 9225 |
| 45-164 | For cable up to 1/4" to 9/16" dia | 6.4 to 14.3 mm | L – 9226 |
| 45-165 | For cable up to 3/16" to 5/16" dia | 4.8 to 7.9 mm | L – 9225 |

Budgetary Estimated cost : Rs.1200.00

Source of supply :Marketed by
M/S Sumitron Export Pvt. Ltd.
27, Community Centre,
Naraina phase-1.
NEW DELHI - 110 028

3.6 Wire Stripper



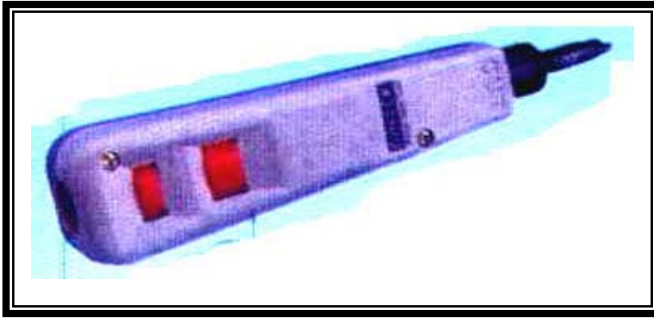
Name : Wire stripper
Application : For stripping the wires.
Make/Model : IDEAL / 45-715
Specification :

| Model No. | Wire range |
|-----------|-------------------------|
| 45-715 | 10-18 AWG Solid |
| 45-716 | 16-26 AWG stranded |
| 45-717 | 22-30 AWG Solid |
| 45-178 | 8-16 AWG Solid stranded |

Budgetary Estimated cost : Rs.650.00

Source of Supply : M/S Sumitron Exports Pvt. Ltd.
 P.O. Box 10227, Naraina
 Phase I, New Delhi - 110 028

3.7 Punch Down Tool



Name : Punch Down or Crone Tool
Application : For inserting and cut the cable terminations with high/low actuation setting.
Make/Model : AVEN /Article No 10.135

Budgetary Estimated cost : Rs.2000.00
Source of Supply : M/S Sumitron Exports Pvt. Ltd.
P.O. Box 10227, Naraina
PHASE I, NEW DELHI - 110 028

3.8 Soldering Station



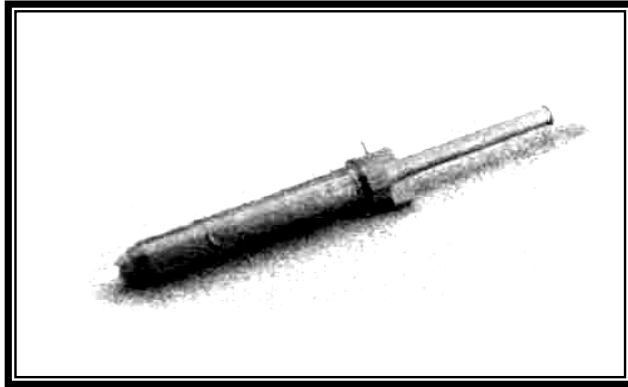
Name : Soldering station
Application : For soldering of PCB etc.
Make/Model : HAKKO/397
Specification :

| | |
|--------------------------|-----------------|
| Model No. | 937 |
| Power Consumption | 60 w |
| Output voltage | AC 24 volts |
| Heating element | AC 24 volt 50 w |
| Weight | Approx 1.3 kg |
| 900S Iron | 25 gms |
| 907 Iron | 44 gms |
| 908 Iron | 54 gms |

Budgetary Estimated cost : Rs. 12000/-

Source of Supply : M/S Sumitron Exports Pvt. Ltd.
 P.O. Box 10227, Naraina
 PHASE I, NEW DELHI - 110 028

3.9 DE- SOLDERING PUMP



| | | |
|---------------------------------|---|--|
| Name | : | De-Soldering Pumps |
| Applications | : | Sucking of solder |
| Make/Model | : | AVEN/ 17.595 |
| BUDGETARY ESTIMATED COST | : | Rs.525.00 |
| Model No. | : | 17.535 of AVEN Tools |
| SOURCE OF SUPPLIER: | | Marketed by M/S Sumitron Export Pvt. Ltd. 27, Community Centre, Naraina phase-1. New Delhi - 110 028 |

3.10 Fibre Optic Cleaver & Stripper



Name : Fiber optic cleaver & Stripper
Application : For cleaving and stripping the optical fiber cable during jointing.
Make/Model : Cleaver: TECHNI-TOOL/ No.
 250ST125
 Stripper: TECHNI-TOOL/ No.
 250ST001

Budgetary Estimated cost : Cleaver : Rs. 2500.00
 Stripper : Rs. 3000.00

Source of Supply : M/S Sumitron Exports Pvt. Ltd.
 P.O. Box 10227, Naraina
 Phase I, New Delhi - 110 028

3.11 Cable Tie Tensioning/Cutting Tool



- Name** : Cable tie tensioning and cutting tool
- Application** : For tensioning and cutting of cable ties.
- Make/Model** : Hilpress/Article 06950
- Specification** : Operating range cable tie width 5–9 mm Weight : 0.360 kg
Length : 270 mm

Budgetary Estimated cost: Rs. 750.00

Source of Supply : M/S Sumitron Exports Pvt. Ltd.
P.O. Box 10227, Naraina
Phase I, New Delhi - 110 028

3.12 Vaccume Pick-Up Tool



Name : Vacuum Pick-Up Tool

Application : For pick-up the components.

Make/Model : HAKKO/394

Specification :

| | |
|-------------------------|--------------------------|
| Model No. | 394 |
| Power Supply | AAA Alkaline battery x 2 |
| Suction Capacity | 120 gf (with pad/10 mm) |
| Outer Dimensions | 130 mm x 29 mm x 22 mm |
| Weight | Approx. 43 gms. |

Budgetary Estimated cost : Rs.2500.00

Source of Supply : M/S Sumitron Exports Pvt. Ltd.
P.O. Box 10227, Naraina
PHASE I, NEW DELHI - 110 028

3.13 ELECTRIC SCREWDRIVER



Name : DC & AC Electric Screwdriver
Application : For screwing
Make/ Model : LOOVER/LT

Specification

| Model No. | LT | | | | | |
|-----------|-----------------------------|---------|---------|---------|---------|---------|
| | 940 | 943 | 945 | 948 | 916c | 926C |
| Rpm | 1000 | 660 | 1000 | 660 | 1000 | 660 |
| Torque | 0.5-0.7 | 0.8-10 | 0.8-12 | 0.8-18 | 2-25 | 2-35 |
| Mm ϕ | 33 | 33 | 33 | 33 | 37 | 37 |
| L mm | 215 | 215 | 215 | 215 | 250 | 250 |
| Weight | 470 | 470 | 470 | 470 | 630 | 630 |
| Screw | 1.7-3.0 | 1.7-3.0 | 1.7-3.5 | 1.7-4.0 | 2.0-5.0 | 2.0-6.0 |
| Voltage | 110 V or 220 V or 240 Volts | | | | | |

Budgetary Estimated cost : Rs.3000.00
Source of supply :Marketed by
M/S Sumitron Export Pvt. Ltd.
27, Community Centre,
Naraina phase-1.
New Delhi - 110 028

3.14 Blower/Dust Extractor



Model No : GBL 550

Specifications:

| | |
|-------------|--------------------------|
| Power input | 550 W |
| Pressure | 800 MMAQ |
| Air volume | 2.7 M ³ /Min. |
| Weight | 1.7 Kgs. |

Budgetary Estimated cost : Rs. 5600/-

**Source of supply : M/s BOSCH
Motor Industries Co. Ltd.,
Power tool division,
Hosur road, Adugodi,
BANGALORE - 560030**

3.15 Hot Air Gun/Hot Air Blower



Name : Hot Air Gun/Hot Air Blower

Application : Drying of moisture of silica gel & joint, drying of moisture of control panels etc.

Make/Model No.: CHG 600 CE

Specifications:

| | |
|-------------------------|------------------------|
| Rated power consumption | 550 W |
| Temperature range | 100-600 ⁰ C |
| Air flow rate | 350-550 Lit/min |
| Stepless temp. control | Yes |
| Airflow regulation | 2 stage |
| Weight | 0.7 Kgs. |

Budgetary Estimated cost : Rs. 6,500/-

Source of supply : M/s BOSCH
Motor Industries Co. Ltd.,
Power tool division,
Hosur road, Adugodi,
Bangalore – 560030

3.16 Auto Ranging Digital Multimeters



- Name** : Auto Ranging Digital Multimeter
- Application** : Measurement of voltage, current resistance, checking of continuity
- Make/ Model** : 9A₀₂
- Specification** :

| | |
|------------|--|
| Display | Auto/ Manual ranging, 3 ^{3/4} Digit 3400 count LCD with Analog bargraph |
| DC Voltage | 340mV/3.4/34/340/1000V ± (0.5%rdg + 4 dgt) on 340mV/ 3.4V ± (0.7%rdg + 4 dgt) on 34/340V ± (1.0%rdg + 4 dgt) on 1000V |
| AC Voltage | 3.4/34/340/750V ± (1.0%rdg + 8 dgt) on all ranges except ± (1.5%rdg + 8 dgt) on 750V |

| | |
|----------------------------|--|
| DC Current | 340μA/3.4/34/340mA/3.4/20A ± (1.5%rdg + 8 dgt) |
| AC Current | 340μA/3.4/34/340mA/3.4/20A ± (2.2%rdg + 4 dgt) |
| Resistance | 340Ω/3.4/34/340kΩ/3.4/34MΩ ± (0.7%rdg + 4 dgt) on all ranges except ± (1.2rdg + 4 dgt) on 3.4MΩ ± (2.5%rdg + 4 dgt) on 34MΩ |
| Diode | Yes |
| Continuity Buzzer | Yes |
| Full Icon Display | Yes |
| Auto power off/ Steep mode | Yes |
| Low battery display | "BATT" is indicated |
| Input impedance (Voltage) | 10 MΩ |

| | |
|----------------|-------------------|
| Power | One 9V battery |
| Battery life | 200 hours typical |
| LCD digit size | 17 mm |

Budgetary Estimated cost : Rs. 8,000/-

Source of supply : M/s MECO Instruments Pvt.Ltd.
P.O. Box 6388, 301
Bharat Industrial Estate
TJ road, Sewree (West),
Mumbai - 400 015

3.17 Digital Clamp Meter



Name : Digital Clamp meter

Application : On line measurement of current, voltage, resistance & frequency.

Make/ Model : MECO/ 2250

Specification :

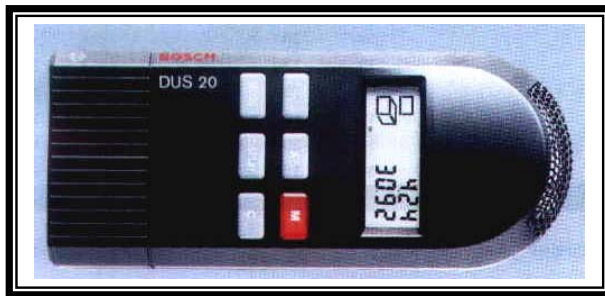
| | |
|------------|--|
| AC Current | 20A, 200A, 1000 A |
| Accuracy | $\pm (2\% \text{rdg} + 4 \text{dgt})$ on 200/1000A $\pm (3\% \text{rdg} + 4 \text{dgt})$ on 20A |
| Over load | 1000 A AC max. for 1 min. |
| AC Voltage | 200v, 750V (50-500 Hz) |
| Accuracy | $\pm (1.2\% \text{rdg} + 4 \text{dgt})$ on 200V $\pm (1.5\% \text{rdg} + 4 \text{dgt})$ on 750V |
| DC Voltage | 2V(in 2250 only), 200V, 1000V |
| Accuracy | $\pm (0.5\% \text{rdg} + 1 \text{dgt})$ on all ranges |

| | |
|--|---|
| Resistance | 200 Ω , 200K Ω |
| Accuracy | $\pm (1\% \text{rdg} + 1 \text{dgt})$ on all ranges in 2250 and $\pm (1.5\% \text{rdg} + 3 \text{dgt})$ on all ranges in 2250F |
| Audible continuity diode test function power | One 9 V battery |
| Battery life | 200 hours typical |
| Low battery | "BATT" is indicated |
| Dimension | 250(H)x98(W)x35(D)mm |
| Weight | 400 gms approx. |
| Accuracy | Supplied with a pair of test leads, carrying case, battery and instruction manual |
| Jaw opening | 55mm max. |

Budgetary Estimated cost : Rs. 9,000/-

Source of supply : M/s MICO Instruments Pvt. Ltd.
P.O. Box 6388, 301
Bharat Industrial Estate
TJ road, Sewree (West),
Mumbai - 400 015

3.18 Digital Range Finder



Description :

The digital range finders are the right tools for measuring any length and distance. Ideal for fast and precise measuring and for adding up lengths, areas and volumes.

Specification :

| | |
|--------------------------------------|------------------------------|
| Weight approx. | 200 gms |
| Measuring units | m/ cm, ft/inch |
| Measuring Accuracy at -5°to +50°C | ± 1% |
| Measuring Accuracy at +10°C to +40°C | ± 0.5% |
| Measuring range | 20 m |
| Battery | 3 x CR 20032 4 x 1.5 V DC |
| Automatic cut off | Approx. 10 sec. |

Budgetary Estimated cost : **RS. 6,000/-**

Source of supply : M/s BOSCH
Motor Industries Co. Ltd., Power tool
division, Hosur road, Adugodi,
Bangalore - 560030

3.19 Metal Detector



- Name** : Intelligent Measuring Instrument
- Application** : Detects the presence of iron and live wires inside the wall.
- Make/Model No.** : BOSCH/DMO 10
- Specifications** : Measuring unit – mm
Battery – 9 V DC
- Budgetary Estimated cost** : Rs. 4500.00
- Source of supply** : M/s BOSCH
Motor Industries Co. Ltd.,
Power tool division,
Hosur road, Adugodi,
Bangalore – 560030.

3.20 All Purpose Saw



Name : All Purpose Saw
Application : Cutting work of sheet metal, iron angles, pipes, troughs etc.
Make/ Model No. : PFX 550
Specifications

| | |
|---------------------|------------------|
| Saw in wood | 150 MM |
| Saw in steel | 12 MM |
| Power input | 550 W |
| No load stroke rate | 2600 stroke/min. |
| Saw stroke length | 26 MM |
| Weight | 3.0 Kg. |

Budgetary Estimated cost : Rs. 10,000/-
Source of supply : M/s BOSCH
 Motor Industries Co. Ltd.,
 Power tool division,
 Hosur road, Adugodi,
BANGALORE - 560030

3.21 Plainer



Name : Planer
Application : Light weight one hand machine for all kind of planing work
Make/Model No. : BOSCH/GHO 31-82

Specifications

| | |
|---------------------------------|-----------|
| Power output | 750 W |
| No-Load speed | 13000 rpm |
| Cutting depth adjustment | 0 –3.1 mm |
| Planing width | 82mm |
| Rebate depth | 0 24 mm |
| Weight | 2.8 kg |

Budgetary Estimated cost : Rs. 10,800.00
Source of supply : M/s BOSCH
 Motor Industries Co. Ltd.,
 Power tool division,
 Hosur road, Adugodi,
 Bangalore – 560030

3.22 DC Operated Drill Machine



Name : Cordless tool
Application : To drill in steel and wood
Make/Model No. : BOSCH
Specifications

| | |
|---------------------------------|-------------------|
| Model | GBH 24 VRE |
| Max. screw dia. | 20 mm |
| Dia in steel | 10 mm |
| Dia in wood | 20 mm |
| Battery voltage | 24 V /1.7 Ah |
| Rated speed | 0-4400 rpm |
| Weight with battery pack | 3.5 kg |

Budgetary Estimated cost : Rs. 23,450/-
Source of supply : M/s BOSCH
 Motor Industries Co. Ltd.,
 Power tool division,
 Hosur road, Adugodi,
 Bangalore – 560030

3.23 Portable Power Drill Machine



Name : Multi purpose portable power drill machine
Application : Drilling of holes

1. **Make/Model** : M/s BOSCH/ GBM 10

Specifications

| | |
|------------------------|------------------|
| Power input | 400 W |
| Impact rate | 44800 / min. |
| R.P.M. | 2200/2800 RPM |
| Weight | 1.4 Kg |
| Battery backup in min. | NA |
| Volt/amp./watts | 230V |
| Dia. in concrete | 10 MM |
| Dia. in metal | 8 MM |
| Dia. in wood | 20 MM |

Budgetary Estimated cost : Rs. 7,000/-
Source of supply : M/s BOSCH
 Motor Industries Co. Ltd.,
 Power tool division,
 Hosur road, Adugodi,
 BANGALORE - 560030

2. **Make/Model** : M/s KPT KD3C

Specifications

| | |
|------------------------|--------------------------------------|
| Power input | 550 W |
| Impact rate | -- |
| R.P.M. | 2200/2800 RPM |
| Rated speed | -- |
| Weight | 3.2 Kg |
| Battery backup in min. | NA |
| Volt/amp./watts | 230V/NL 0.8A-1.1A, FL 2.5 A/ 550W |
| Dia. in concrete | 10 MM |
| Dia. in metal | 8 MM |
| Dia. in wood | 20 MM |

Budgetary Estimated cost : Rs. 7190/-

Source of supply : KPT Sales and Service Ltd.
 309, Vasant Vihar Commercial
 Complex, Dr. C. Gidwani Road,
 Chembur, Mumbai -400074,
 Maharashtra India

3.24 Tree Cutting Machine



Name of Tool : Portable Power Driven Tree Cutting Machine (Chain Saw)

Application : Trimming of tree branches

Specification :

| | | |
|-----------|-----------------|---|
| Dimension | L x W x H | 380 x 230 x 245 mm |
| Weight | Power head, dry | 3.3 kg |
| Engine | Type | Air cooled two stroke single cylinder |
| | Displacement | 30.1 cc |
| | Carburetor | Diaphragm type |
| | Magneto | Flywheel magneto. CDI (Capacitor Discharge Ignition) system |
| | Spark plug | NGK BPM 7A |

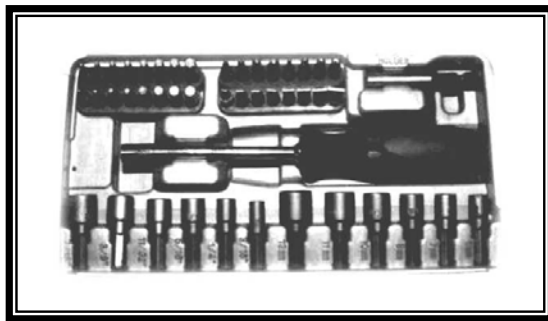
| | | |
|---------------------|--------------------|---|
| | Starter | Recoil starter |
| | Power transmission | Automatic centrifugal Clutch |
| | Handles | Conventional handle |
| Fuel | Mixture Ratio | Regular grade gasoline 25 parts :ECHO brand motor oil 1 part (4%) (or an air cooled 2 cycle engine oil of a reputable brand name) |
| | Tank capacity | 0.25 litre |
| Chain oil | Tank capacity | Motor oil 0.15 litre |
| Guide bar and chain | Lubrication | Automatic |
| | Chain pitch | 3/8 |
| | Gauge | .050 in |
| | Guide bar length | 30 cm |
| Other devices | | Throttle control lockout. Chain catcher Chain brake |

Make/ Model : ECHO/ECO - 3050

Budgetary Estimated cost : Rs.18500.00

Sources of Supplier : Marketed by :
Paramount Tools Company
5, Narayan Dhurv/Cross land,
P.O.Box. No. 3402, Mumbai - 3.

3.25 SCREW DRIVER BIT SET



Name : Screw driver bit set
Application : For screwing different shape screws
Make/ Model No. : 1. BOSCH
 2. M/s Jensen
 Cat No. 690-542

Specifications :

| | |
|-------------------------------|--|
| BOSCH | M/S JENSEN |
| Size SVC 46 pieces | 28 –pieces Skewdriver Pro kit gear driven offset |
| Bit set 7/16" or 6mm to 7/16" | Removable handle with 4 ^{1/2} " magnetic extension Skew socket: 5-10 mm Torx bit: T10, T15, T20, T27 Slotted bits: 1/8", 3/16", 1/4", 5/16" Allen bits: 5/64" to 3/16" |

Budgetary Estimated cost : M/s BOSCH : Rs. 1250/-
 M/S Jensen : RS. 2250/-

Source of supply :

1. M/s BOSCH
 Motor Industries Co. Ltd.,
 Power tool division,
 Hosur road, Adugodi,
 Bangalore – 560030
2. M/s S.S. Tools (India) Pvt. Ltd.
 234, 2nd Floor, Ajmeri Gate
 Delhi