

SN 149

ISO 9001: 2015	Document No.: PE-O-6.2-2	Version No.: 1.0	Date Effective: 27.01.2021
Document Title: Organization Chart of Officers and staff of the directorate			



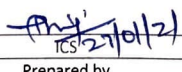
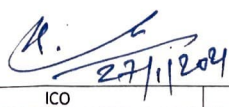
RESEARCH DESIGNS AND STANDARDS ORGANISATION Manak Nagar, Lucknow - 226011

PE-O-6.2-2
Organization Chart of Officers and staff of the directorate

1. Amendment History:

S.N	Date of Amendment	Version	Reasons for Amendment
1.	First issue	1.0	First Issue under new documentation system of ISO 9001: 2015 approved by ED/PS & EMU at NP file No. no. PE/ISO/07.

Copy controlled only when viewed on RDSO ISO Cell website. Local/printed copies permitted but are uncontrolled. Check controlled copies before use.

 ICS 27/01/21	 ICO 27/1/2021	Page 1 of 3
Prepared by	Issued by	

ISO 9001: 2015	Document No.: PE-O-6.2-2	Version No.: 1.0	Date Effective: 27.01.2021
Document Title: Organization Chart of Officers and staff of the directorate			

2. **Purpose:** To maintain up-to-date record of Organization Chart of Officers and staff of the directorate issued by the directorate.
3. **Scope of Application:** Applies to Organization Chart of Officers and staff of the directorate of the directorate.
4. **Procedure:** The list is annexed. While using the list print and use only the annexed list.
5. **Referenced Documents:** Nil
6. **Referenced Documents of External Origin:** Nil
7. **Associated Records:** Nil
8. **Responsibility and Authority**

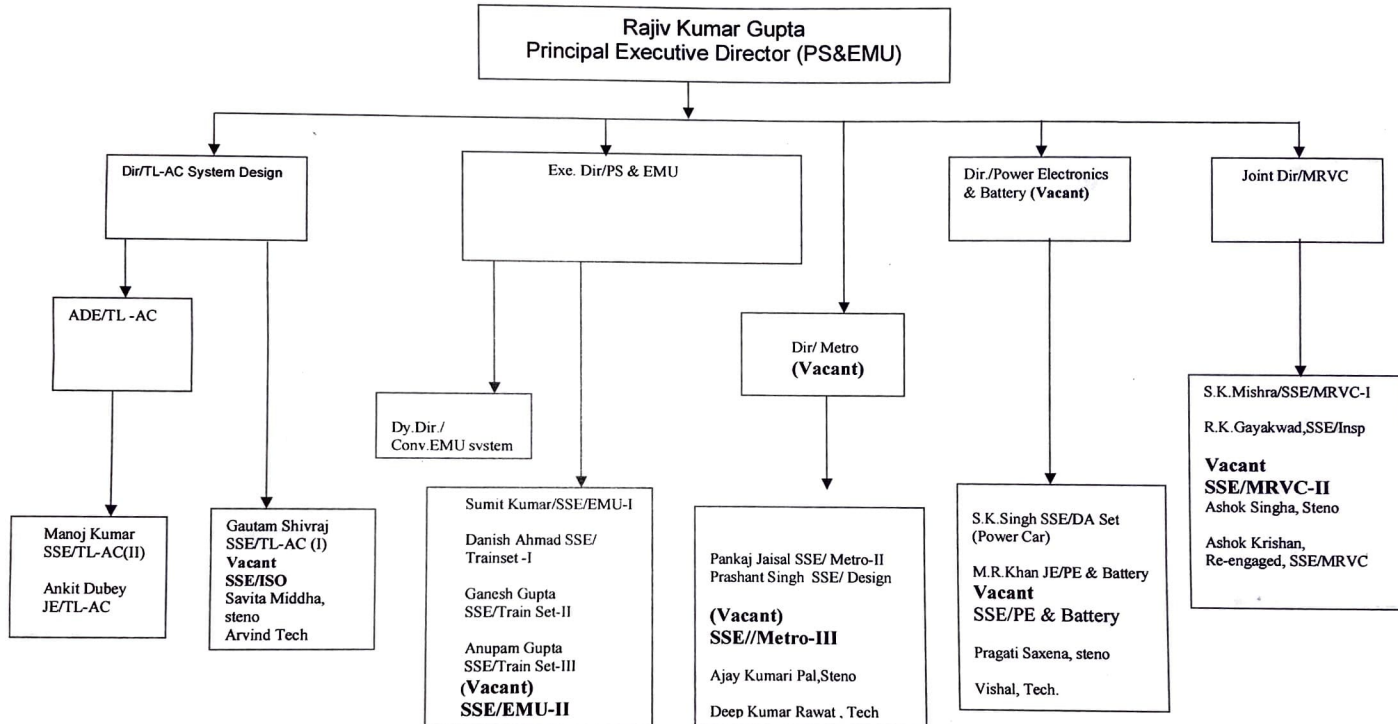
Activity	Responsible	Approver	Supporting	Consulted	Informed
Creation, maintenance of this document	CO/ISO	Directorate Head (EDPS)	CS/ISO		
Requirement of deviation from this form template.	Director In-charge of Directorate	Head of Directorate	Respective officer of directorate		

9. **Abbreviations**

PEDPSEMU: Principal Executive Director/Power Supply & EMU
EDPS: Executive Director/Power Supply & EMU
UO : Unit Officer
US : Unit Supervisor
CO: Coordinating Officer
CS: Coordinating Supervisor

 Prepared by	 ICO Issued by	Page 2 of 3
--	---	-------------

ORGANISATION CHART



Note: (i) Anita Chandra, PS will report to PED/PS & EMU.