

Government of India
Ministry of Railways
Research, Designs & Standards Organisation
Manak Nagar, Lucknow - 226 011

No.EL/2.2.1

Dated 9-09-1998

RDSO MODIFICATION SHEET NO. WAG5/29 **(New No. WAG5/242)**

Provision of rubber bush inside the Open End of longitudinal tube of
AM12 type pantographs.

1. OBJECT

- 1.1** Railways have reported rusting of the longitudinal tube as a result of water seepage through its open end on which the upper articulation assembly is mounted
- 1.2** In order to avoid this seepage of water inside the longitudinal tube, it is recommended to fully insert a rubber bush (SK. EL.-4434) at the open end to block the passage. This bush will prevent the seepage of water and eliminate the rusting of longitudinal tube.

2. WORK TO BE CARRIED OUT

- 2.1** Dismantle the upper articulation assembly as a complete unit from the longitudinal tube.
- 2.2** Insert rubber bush (RDSO Drg. No. SK. EL.-4434) fully through the open end of longitudinal tube.
- 2.3** Reassemble the upper articulation assembly with the longitudinal tube fitted with the rubber bush.

3. APPLICATION

All AC locomotives/EMUs fitted with AM12 type of pantographs.

4. MATERIAL REQUIRED

A Rubber bush as per RDSO's Drg. No. SK. EL.-4434 (enclosed)

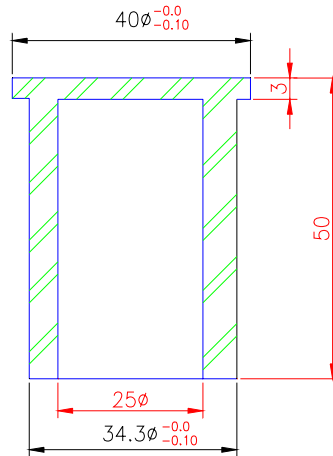
5. MATERIAL RENDERED SURPLUS

NIL

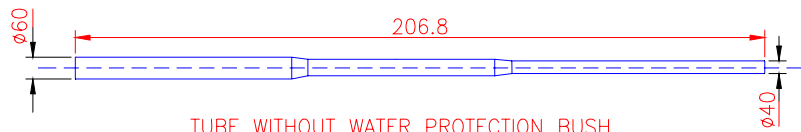
6. AGENCY OF IMPLEMENTATION

All AC electric locomotives/EMU sheds and workshops.

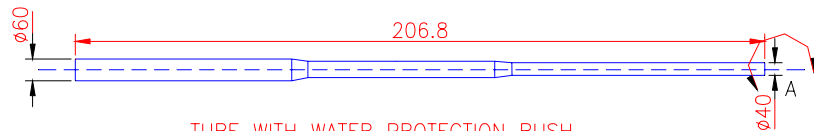
Encl : As above



DETAILS OF "A"




TUBE WITHOUT WATER PROTECTION BUSH



TUBE WITH WATER PROTECTION BUSH

MATL: NATURAL RUBBER TO ASTM 2000 TYPE AA
OR ITS EQUIVALENT.

Dt.	16.2.79
D	
T	
C	

REF:—	SCALE:— 1:1	APPROVED BY:— 
WATER PROTECTION BUSH FOR LONGI-TUDINAL TUBE OF AM-12 TYPE OF PANTOGRAPH		
RDSO.ELEC.DTE.		SKEL-4434

