

GOVERNMENT OF INDIA  
MINISTRY OF RAILWAYS  
RESEARCH DESIGNS & STANDARDS ORGANISATION

No. EL/3.2.172

Manak Nagar, Lucknow-11  
Dated 25.1.1998

Modification Sheet No. WAG5/24

1. Title: Adoption of modified commutator and bearing bracket on traction motor type HS 15250A.
2. Application: Traction motor type HS 15250A.
3. Object : Railways have reported that during maintenance shed people are facing lot of difficulties in attending the brush holders in assembled traction motor type HS15250A. This problem has been studied in detail. The main reason for this is the non-availability of inspection window in the commutator end bearing bracket.

In the original design of Hitachi Traction Motor, there is no provision of inspection window in the commutator end bearing bracket.

The matter has been discussed with CLW and BHEL in detail and it was recommended to have an inspection window in CE bearing bracket in line with TAO 659 Traction Motor. M/s BHEL and CLW have agreed. M/s BHEL has already implemented this modification on their traction motor from Sl. No. 4672399 onwards.

This modification states the details of the work to be carried out on the existing as well as on the newly manufactured 'CE' bearing bracket of Traction Motor type HS 15250A.

4. Work to be carried out :
  - 4.1 Refer the attached Fig. No. 1 & 2 (copy enclosed)
  - 4.2 CE bearing bracket to be modified as shown in 'HH' of the Fig. No. 1.
  - 4.3 Cover to be made as per attached Fig. No. 2.
  - 4.4 Before putting back motor into service ensure that hole is covered with the inspection cover.
5. Schedule of Implementation:
  - Zonal Railways : During overhaul/repair.
  - Production Units : On their regular production.

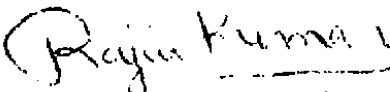
115191

6. Agency of Implementation:

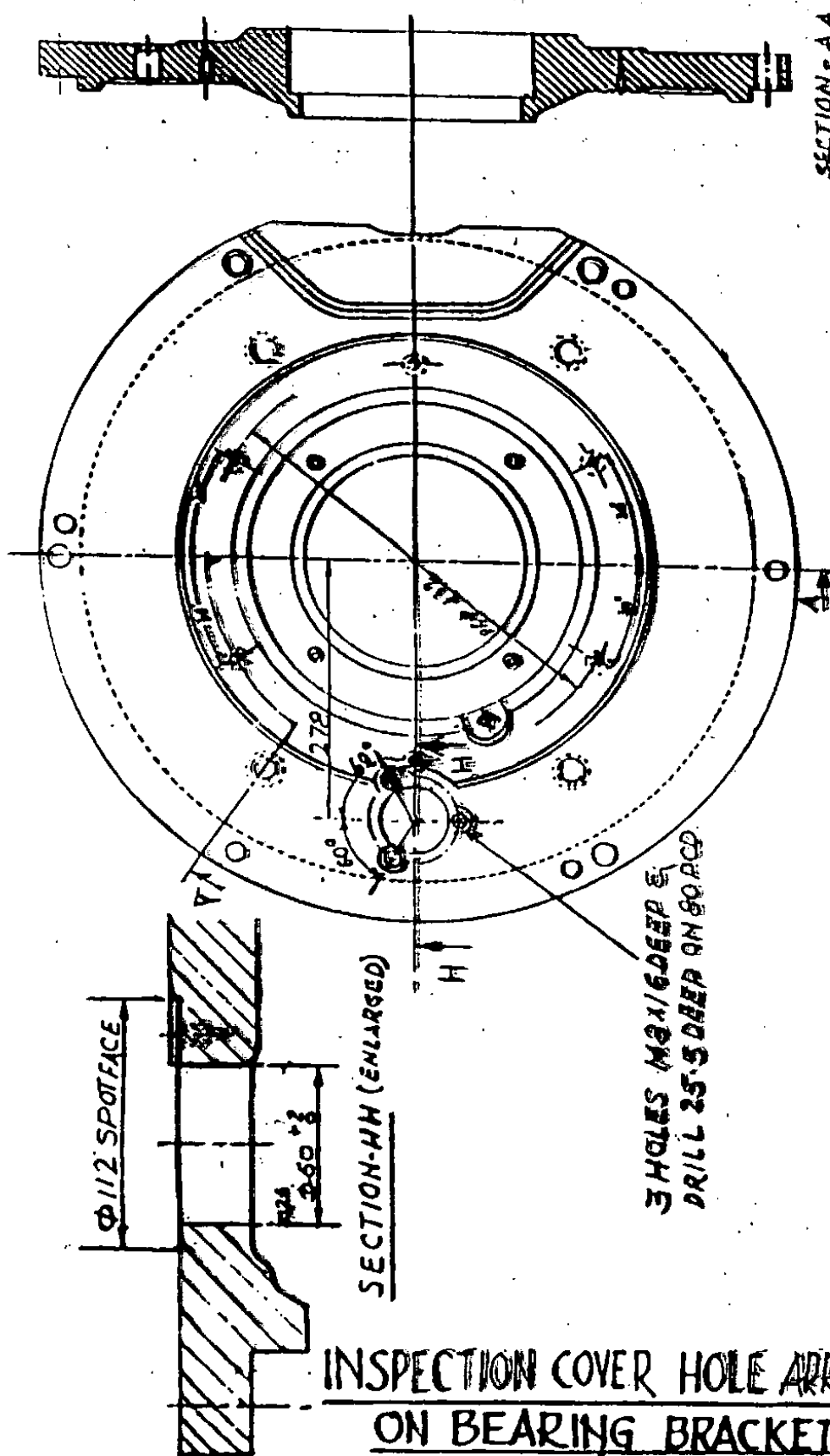
- All Traction motor shops.
- POH/Repair shop.
- TM Production Units.

7. Distribution: As per enclosed list.

Encl: As above.

  
(R K Kulshrestha)  
for Director General (Elec)

115192

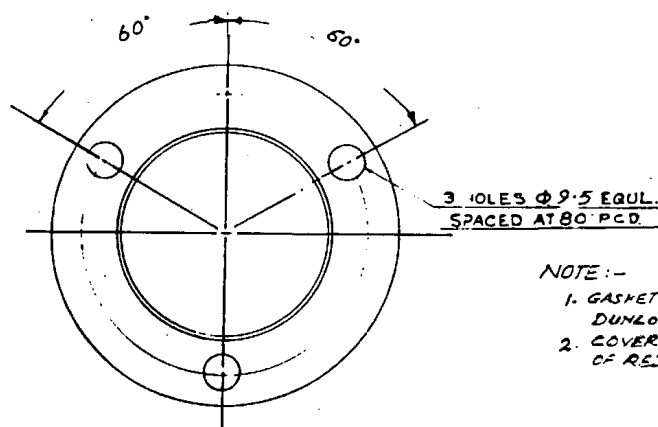
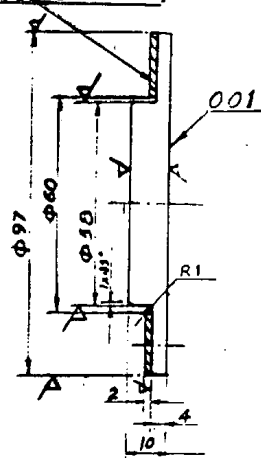


115193

FIG. 1

(ALL DIMENSIONS ARE IN mm)

002-SEE NOTE-1



NOTE:-

1. GASKET (ITEM 2) TO BE STUCK WITH SUITABLE DUNLOP ADHESIVE OR EQUIVALENT.
2. COVER TO BE SUPPLIED WITH TWO COATS OF RED PRIMER PAINT.

INSPECTION COVER FOR BRG. BRACKET C.E.

115194

FIG. 2