

Government of India
Ministry of Railways
Research, Designs & Standards Organisation
Manak Nagar, Lucknow - 226 011

No.EL/3.2.29

Dt.19.01.1998

RDSO MODIFICATION SHEET No. WAG5-26 **(New No. WAG5/239)**

DICTEXTENSION AND AIR IN-LET CONE ARRANGEMENT IN
LOCOMOTIVES FITTED WITH HIGH CAPACITY DBR,s

1. Object:

- 1.1** In order to improve the air discharge to the resistance grids of high capacity DBRs, fitted on ac electric locomotives, provision of duct extension & air in-let cone arrangement is considered necessary. The test results also indicate that there is an improvement in the air discharge with the provision of air in-let cone at the air in-take point of DBR.
- 1.2** This in-let cone is to be provided at the bottom of the DBR opening in the locomotive.

2. Work to be carried out:

- 2.1** Weld the duct extension to the locomotive under frame below the DBR opening .
- 2.2** Fix the cone by bolts and nuts as indicated in RDSO drawing No. SK.EL-4436.

3. Application

- 3.1** All ac electric locomotives fitted with high capacity DBRs.

4. Material required:

- 4.1** Duct extension-1 piece
- 4.2** Cone arrangement-1 piece
- 4.3** Bolts and nuts Size- M6 - 8 Nos..
(As per RDSO Drawing No. SK. EL.-4436)

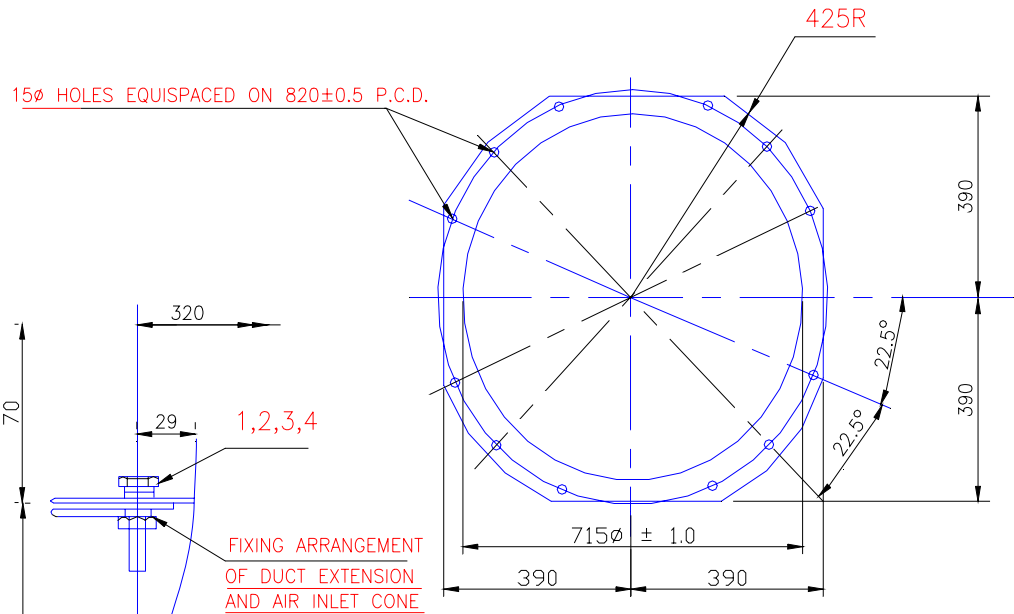
5. Material rendered surplus:

Nil.

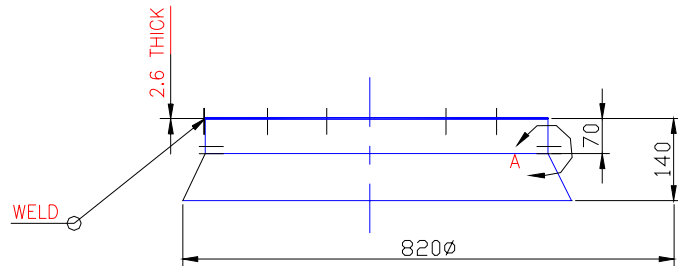
6. Agency of implementation:

All ac electric loco sheds, shops and production units.

SKEL. 4436



TOP VIEW



FRONT VIEW

NOTE:-

MATL:- M.S.SHEET TO IS:226 (CLASS-SHEET)

WEIGHT:-110KG. (APPROX)

4	NUT HEX. M6	8	STEEL	IS:1364
3	PLAIN WASHER M6	16	STEEL	IS:2016
2	SPRING WASHER	16	SPG.STL	IS:3063
1	HEX.HD.SCREW M6x25L	8	STEEL	IS:1364
PART NO.	DESCRIPTION	QTY	SPEC	MATL.

REF:-

SCALE:- NTS

APPROVED BY:-

[Signature]

Sd

PROVISION OF DUCT AND AIR-INLET CONE
IN LOCOMOTIVE FITTED WITH HIGH
CAPACITY DBRS

RDSO. ELEC. DTE.

SKEL 4436

Dt.	1-98
D	AJAI
T	
C	

