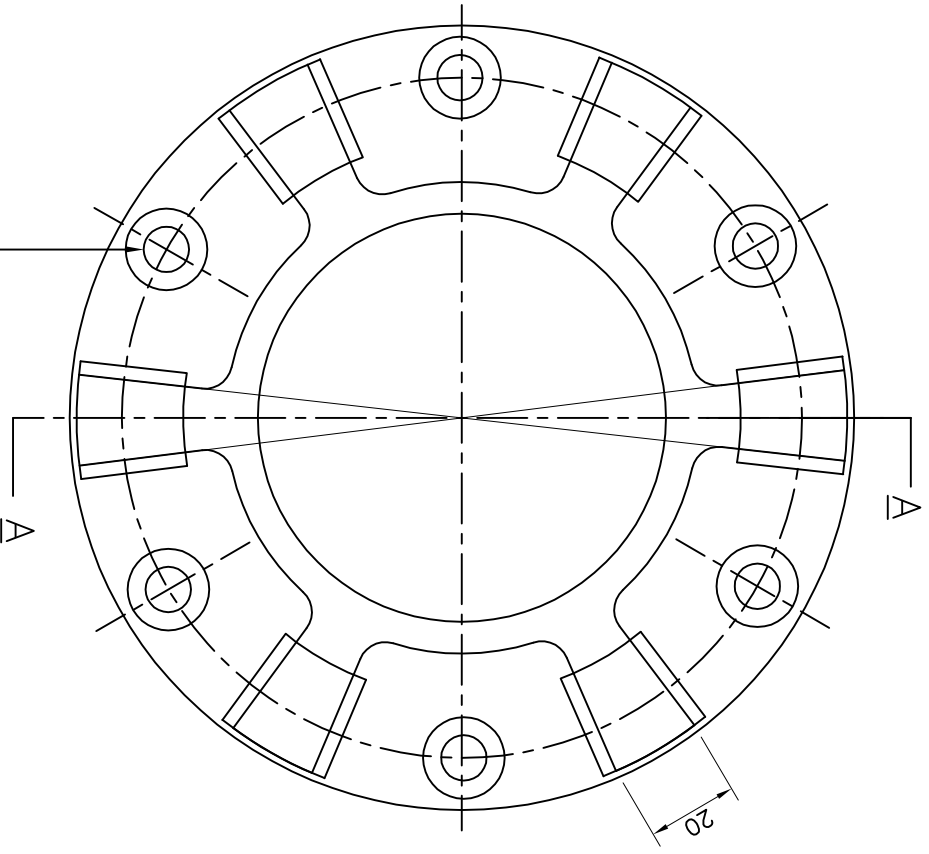


SECTION AT A-A

ON PCD. 150-6 NOS. COUNTER
SUNK HOLE OF $\phi 10/\phi 18$



4. TOLERANCES MAY BE INDICATED INDIVIDUALLY UPON SUITABILITY OF FITMENTS.
3. MATERIAL COMPOSITION AND OTHER DETAILS REFER TO RDSO'S SPECIFICATION No. TM/HM/6/523
2. ALL SHARP CORNERS TO BE CHAMFERED.
1. ALL DIMENSIONS ARE IN MILLIMETRES.

N O T E S

RDSO SPECIFICATION
TM/HM/6/523

SPECIFICATION

SCALE

ALT

DESCRIPTION

AUTH

DRG.No.RDSO/TM/13/22

R. D. S. O.

CLUTCH FLANGE FOR VIBRATION
SHAFT OF TAMPING EXPRESS

(PART No. UD25.619)

(PROVISIONAL)

CANC./SUPED
REVED.