

NOTES :

1. ALL DIMENSIONS ARE IN MM.
2. FITTING CONFIRM TO SPECIFICATION NO: T/SPC/OHE/FITTINGS/0130(10/13) REV.1 OR LATEST.
3. ALL STANDARDS SHALL BE TAKEN LATEST. INDIAN & INTERNATIONAL STANDARDS ARE APPLICABLE WHEREVER REQUIRED.
4. HEIGHT OF CONTACT WIRE ABOVE RAIL LEVEL, TUBE LENGTH, STEADY ARM LENGTH, STAGGER DISTANCE & ASSEMBLY DIMENSIONS MAY VARY AS PER SITE LOCATION & AS PER IMPLANTATION CHART.

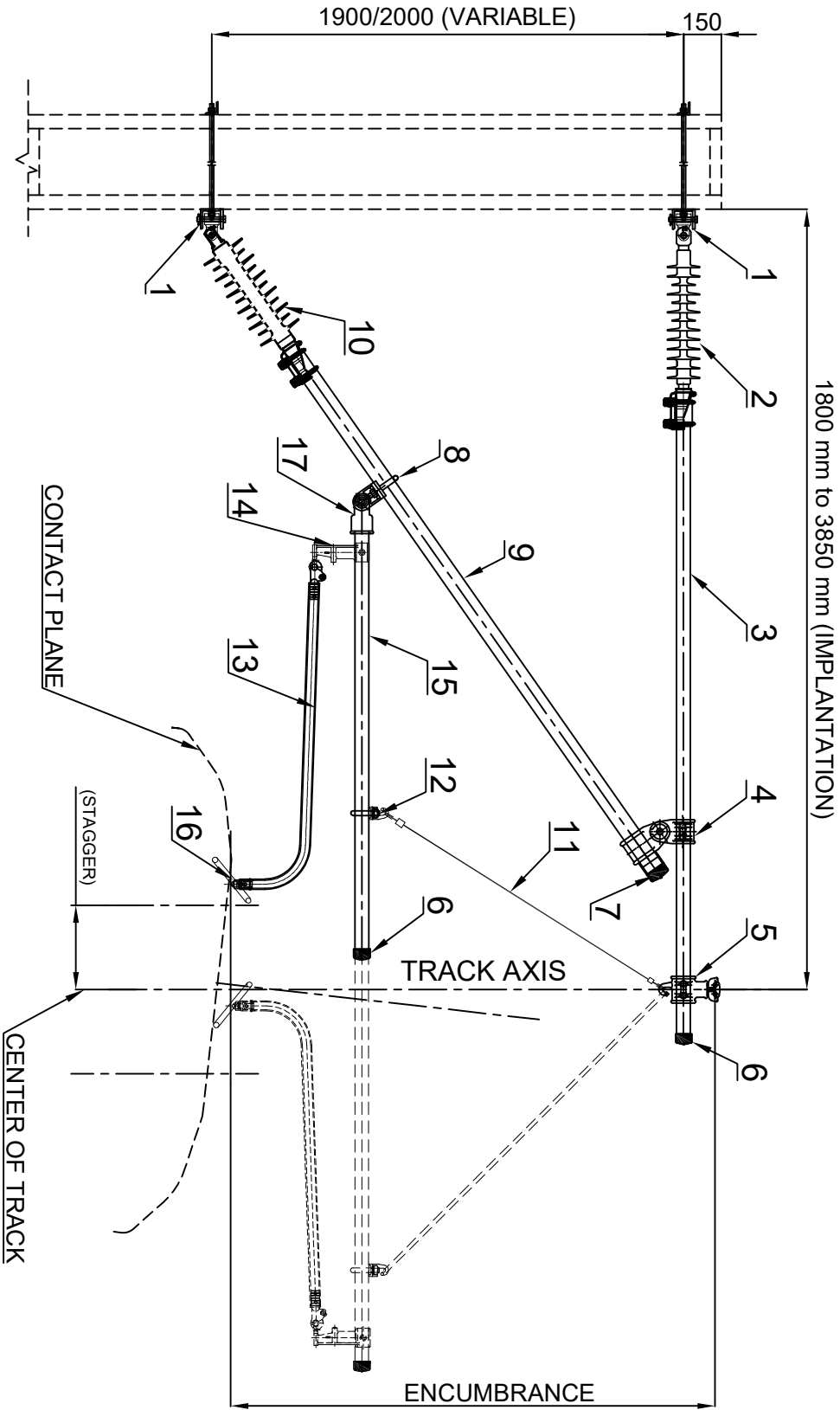
REF. NO.	DESCRIPTION	PART NO.	MATERIAL	SPEC. / STAND.	NUMBER OFF
1	MAST BRACKET ASSEMBLY	-----	AL. ALLOY	AS/7Mg0.6, UNE-EN1706/T6	2
2	STAY INSULATOR - 1600 CD (COMPOSITE) / 1050 CD (PORCELAIN)	-----	SILICON RUBBER / PORCELAIN	T/SPC/OHE/INS/1072 OR T/SPC/OHE/INS/0071	1
3	REGISTER ARM CLEVIS	-----	AL. ALLOY	AS/7Mg0.6, UNE-EN1706/T6	1
4	STAY TUBE (55 x 6 MM)	-----	ALUMINIUM	AW 6082 EN - 573 - 3	1
5	DOUBLE TUBE HOLDER	-----	AL. ALLOY	AS/7Mg0.6, AIS/7Mg0.6, UNE-EN1706/T6	1
6	CATENARY WIRE HOLDER CLAMP	-----	AL. ALLOY	AS/7Mg0.6, UNE-EN1706/T6	1
7	TUBE CAP - 55	-----	ALUMINIUM	AW 6082 EN - 573 - 3	2
8	TUBE CAP - 70	-----	ALUMINIUM	AW 6082 EN - 573 - 3	1
9	HOOK EYE	-----	AL. ALLOY	AS/7Mg0.6, AIS/7Mg0.6, UNE-EN1706/T6	1
10	BRACKET TUBE (70 x 6 MM)	-----	ALUMINIUM	AW 6082 EN - 573 - 3	1
11	BRACKET INSULATOR - 1600 CD (COMPOSITE) / 1050 CD (PORCELAIN)	-----	SILICON RUBBER / PORCELAIN	T/SPC/OHE/INS/1072 OR T/SPC/OHE/INS/0071	1
12	ANTIWIND STAY CLAMP	-----	AL. ALLOY	AS/7Mg0.6, UNE-EN1706/T6	1
13	ANTIWIND STAY WIRE	-----	ST. STEEL	-----	1
14	REGISTER TUBE (55 x 6 MM)	-----	ALUMINIUM	AW 6082 EN - 573 - 3	1
15	HOOK CLIP	-----	AL. ALLOY	AS/7Mg0.6, AIS/7Mg0.6, UNE-EN1706/T6	1
16	REGISTER ARM DROPPER	-----	ST. STEEL	-----	1
17	SWIVEL CLIP	-----	COPPER	Cu ETP	1
18	DROP BRACKET	-----	AL. ALLOY	AS/7Mg0.6, UNE-EN1706/T6	1
19	BFB STEADY ARM ASSEMBLY	-----	AL. ALLOY	AS/7Mg0.6, UNE-EN1706/T6	1

" THIS DRAWING IS THE PROPERTY OF RESEARCH DESIGNS AND STANDARDS ORGANISATION (MINISTRY OF RAILWAYS), LUCKNOW-226011, INDIA AND SHALL NOT BE USED, COPIED OR REPRODUCED IN PART OR WHOLE, WITHOUT PRIOR CONSENT IN WRITING."

MCA PULL OFF / PUSH OFF (TANGENT / CURVE TRACK) (BFB TYPE)		JDTI-2	
		ADETI-2	

R. D. S. O.

DATE	MOD.	NATURE OF MOD.	INITIALS	DATE	NAME	T/DRG/OHE/MCA/000X1123/0	REV.
					DR		0.0
					TC		
			CK			SCALE :- N.T.S.	



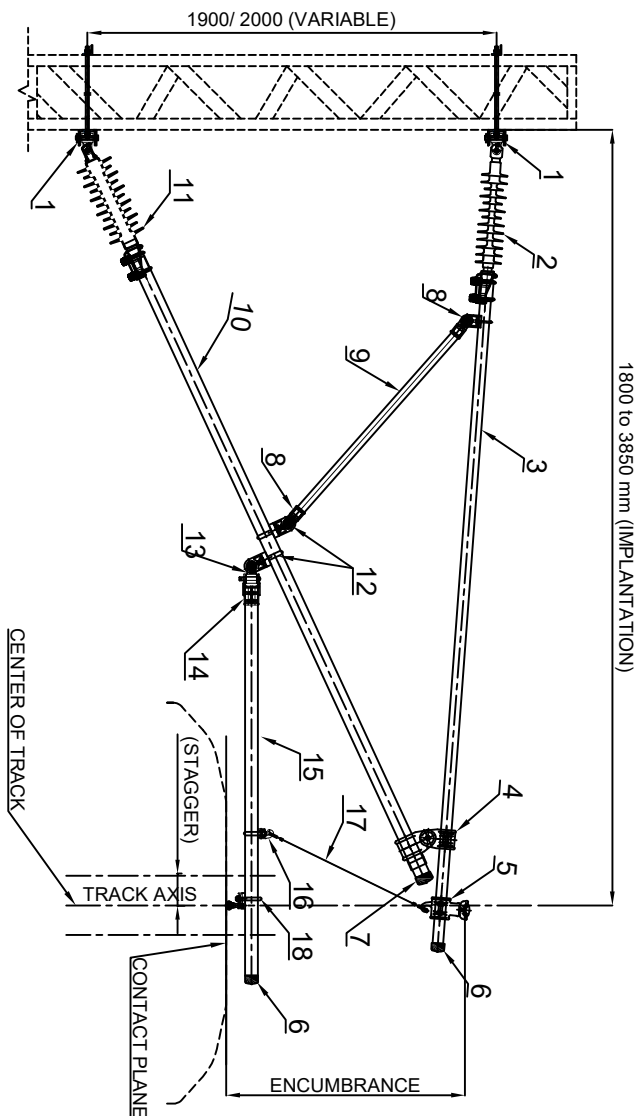
NOTES:

1. ALL DIMENSIONS ARE IN MM.
2. FITTING CONFIRM TO SPECIFICATION NO: TI/SPC/OHE/FITTINGS/0130(10/13) REV.1 OR LATEST.
3. ALL STANDARDS SHALL BE TAKEN LATEST. INDIAN & INTERNATIONAL STANDARDS ARE APPLICABLE WHEREVER REQUIRED.
4. HEIGHT OF CONTACT WIRE ABOVE RAIL LEVEL, TUBE LENGTH, STEADY ARM LENGTH, STAGGER DISTANCE & ASSEMBLY DIMENSIONS MAY VARY FOR AS PER SITE LOCATION & AS PER IMPLANTATION CHART.

REF. NO.	DESCRIPTION	PART NO.	MATERIAL	SPEC. / STAND.	NUMBER OFF
1	MAST BRACKET ASSEMBLY	----	AL. ALLOY	AISt/Mg0.6, UNE-EN1706/T6	2
2	STAY INSULATOR - 1600 CD (COMPOSITE) / 1050 CD (PORCELAIN)	----	SILICON RUBBER / PORCELAIN	TI/SPC/OHE/INS/1072 OR TI/SPC/OHE/INS/0071	1
3	STAY TUBE (55 x 6 MM)	----	ALLUMINIUM	AW 6082 EN - 573 - 3	1
4	DOUBLE TUBE HOLDER	----	AL. ALLOY	AISt/Mg0.6, UNE-EN1706/T6	1
5	CATENARY WIRE HOLDER CLAMP	----	AL. ALLOY	AISt/Mg0.6, UNE-EN1706/T6	1
6	TUBE CAP (FOR 55 MM TUBE)	----	ALLUMINIUM	AW 6082 EN - 573 - 3	2
7	TUBE CAP (FOR 70 MM TUBE)	----	ALLUMINIUM	AW 6082 EN - 573 - 3	1
8	HOOK EYE	----	AL. ALLOY	AISt/Mg0.6, UNE-EN1706/T6	2
9	BRACKET TUBE (70 x 6 MM)	----	ALLUMINIUM	AW 6082 EN - 573 - 3	1
10	BRACKET INSULATOR - 1600 CD (COMPOSITE) / 1050 CD (PORCELAIN)	----	SILICON RUBBER / PORCELAIN	TI/SPC/OHE/INS/1072 OR TI/SPC/OHE/INS/0071	1
11	REGISTER ARM DROPPER	----	ST. STEEL	----	1
12	HOOK CLIP	----	AL. ALLOY	AISt/Mg0.6, UNE-EN1706/T6	1
13	NORMAL BENT STEADY ARM ASSEMBLY	----	AL. ALLOY	AISt/Mg0.6, UNE-EN1706/T6	1
14	DROP BRACKET	----	COPPER	Cu - ETP	1
15	REGISTER TUBE (55x 6 MM)	----	ALLUMINIUM	AW 6082 EN - 573 - 3	1
16	SWIVEL CLIP	----	COPPER	Cu ETP	1
17	REGISTER ARM CLEVIS	----	AL. ALLOY	AISt/Mg0.6, UNE-EN1706/T6	1

" THIS DRAWING IS THE PROPERTY OF RESEARCH DESIGNS AND STANDARDS ORGANISATION (MINISTRY OF RAILWAYS), LUCKNOW-226011, INDIA AND SHALL NOT BE USED, COPIED OR REPRODUCED IN PART OR WHOLE, WITHOUT PRIOR CONSENT IN WRITING."

MCA ASSEMBLY ON CURVED TRACK PULL OFF / PUSH OFF (TUBLER TYPE)			JDTI-2	
			ADETI-2	
R. D. S. O.				
DATE	MOD.	NATURE OF MOD.	INITIALS	
			DATE	NAME
			DR	
			TC	
			CK	
				SCALE :- N.T.S.
				REV.
				0.0



- NOTES :**
1. ALL DIMENSIONS ARE IN MM.
 2. FITTING CONFORM TO SPECIFICATION NO. T/SPC/OHE/FITTINGS/0130(10/13) REV.1 OR LATEST.
 3. ALL STANDARDS SHALL BE TAKEN LATEST. AND INDIAN & INTERNATIONAL STANDARDS ARE APPLICABLE WHEREVER REQUIRED.
 4. HEIGHT OF CONTACT WIRE ABOVE RAIL LEVEL, TUBE LENGTH, STEADY ARM LENGTH, STAGGER DISTANCE & ASSEMBLY DIMENSIONS MAY VARY FOR AS PER SITE LOCATION & AS PER IMPLANTATION CHART.

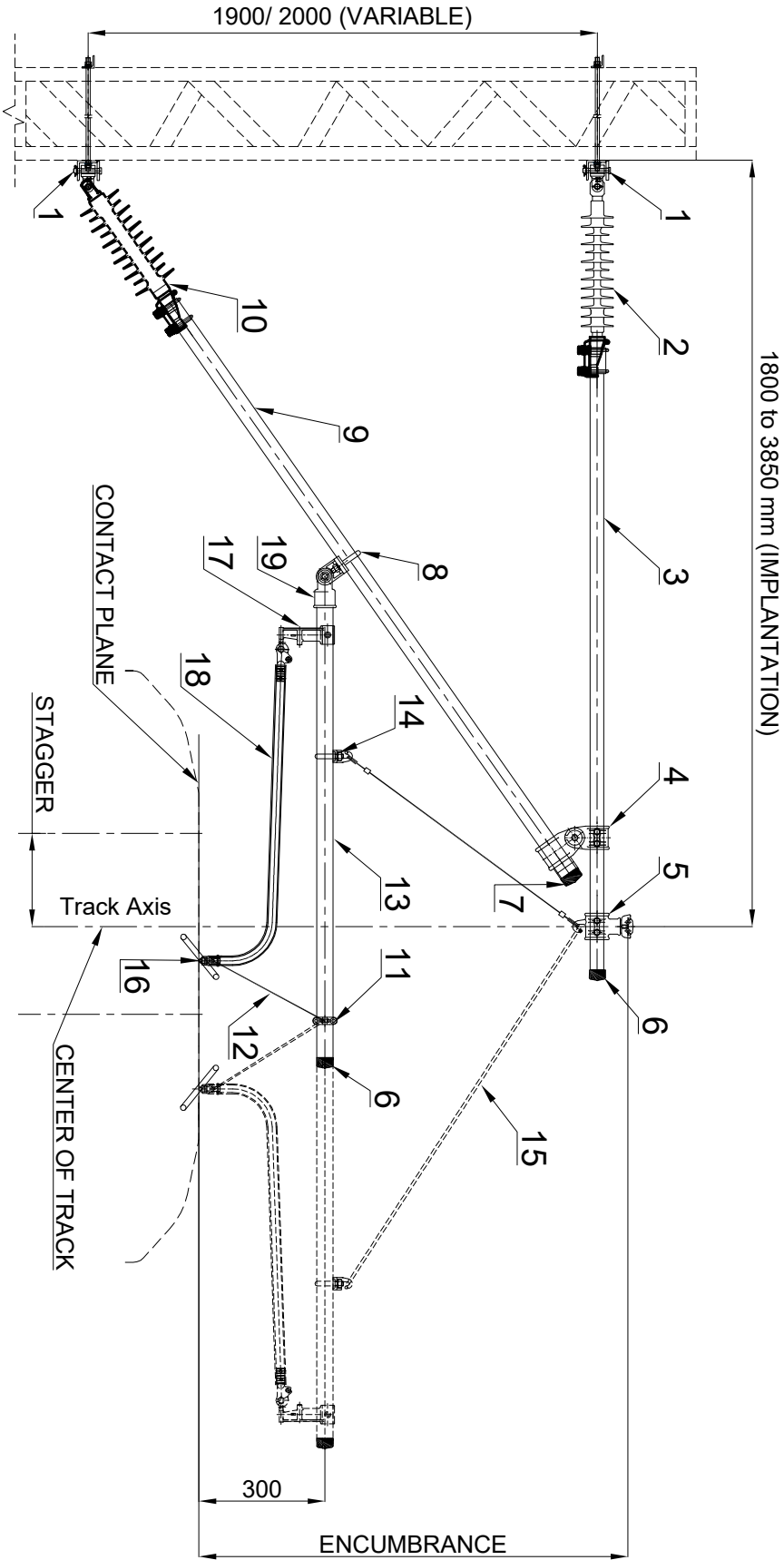
REF. NO.	DESCRIPTION	PART NO.	MATERIAL	SPEC.	NUMBER OFF
1	MAST BRACKET ASSEMBLY	*****	AL. ALLOY	AS17Mg0.6, UNE-EN1706/T6	2
2	STAY INSULATOR - 1600 CD (COMPOSITE) / 1050 CD (PORCELAIN)	*****	SILICON RUBBER / PORCELAIN	T1SPC/CH/ENS/1072 OR T1SPC/CH/ENS/0071	1
3	STAY TUBE (55 x 6 MM)	*****	ALUMINUM	AW 6082 EN - S73 - 3	1
4	DOUBLE TUBE HOLDER	*****	AL. ALLOY	AS17Mg0.6, UNE-EN1706/T6	1
5	CATENARY WIRE HOLDER CLAMP	*****	AL. ALLOY	AS17Mg0.6, UNE-EN1706/T6	1
6	TUBE CAP (FOR 55 MM TUBE)	*****	ALUMINUM	AW 6082 EN - S73 - 3	2
7	TUBE CAP (FOR 70 MM TUBE)	*****	ALUMINUM	AW 6082 EN - S73 - 3	1
8	THREADED CLEVIS ASSEMBLY (FOR 42 MM TUBE)	*****	AL. ALLOY	AS17Mg0.6, UNE-EN1706/T6	2
9	CANTILEVER SUPPORT TUBE (42 x 4 MM)	*****	ALUMINUM	AW 6082 EN - S73 - 3	1
10	BRACKET TUBE (70 x 6 MM)	*****	ALUMINUM	AW 6082 EN - S73 - 3	1
11	BRACKET INSULATOR - 1600 CD (COMPOSITE) / 1050 CD (PORCELAIN)	*****	SILICON RUBBER / PORCELAIN	T1SPC/CH/ENS/1072 OR T1SPC/CH/ENS/0071	1
12	HOOK EYE	*****	AL. ALLOY	AS17Mg0.6, UNE-EN1706/T6	2
13	SWIVEL WITH CLEVIS ASSEMBLY FOR REGISTRATION TUBE	*****	AL. ALLOY	AS17Mg0.6, UNE-EN1706/T6	1
14	ASSEMBLY SUPPORT FOR REGISTRATION TUBE 55 MM	*****	AL. ALLOY	AS17Mg0.6, UNE-EN1706/T6	1
15	REGISTER TUBE (55x 6 MM)	*****	ALUMINUM	AW 6082 EN - S73 - 3	1
16	HOOK CLIP	*****	AL. ALLOY	AS17Mg0.6, UNE-EN1706/T6	1
17	REGISTER ARM DROPPER	*****	ST. STEEL	*****	1
18	STAGGER SUPPORT ASSEMBLY FOR (OOR)	*****	AL. ALLOY	AS17Mg0.6, UNE-EN1706/T6	1

"THIS DRAWING IS THE PROPERTY OF RESEARCH DESIGNS AND STANDARDS ORGANISATION (MINISTRY OF RAILWAYS), LUCKNOW-226011, INDIA AND SHALL NOT BE USED, COPIED OR REPRODUCED IN PART OR WHOLE, WITHOUT PRIOR CONSENT IN WRITING."

MCA
OUT OF RUNNING
ASSEMBLY

JDTI/OHE	
ADE/OHE	

R. D. S. O.									
DATE	MOD.	NATURE OF MOD.	INITIALS	DATE		NAME		REV.	
				DR		T/IDRG/OHE/MCA/000X3/2310		0.0	
				TC		SCALE :- NTS			
				CK					



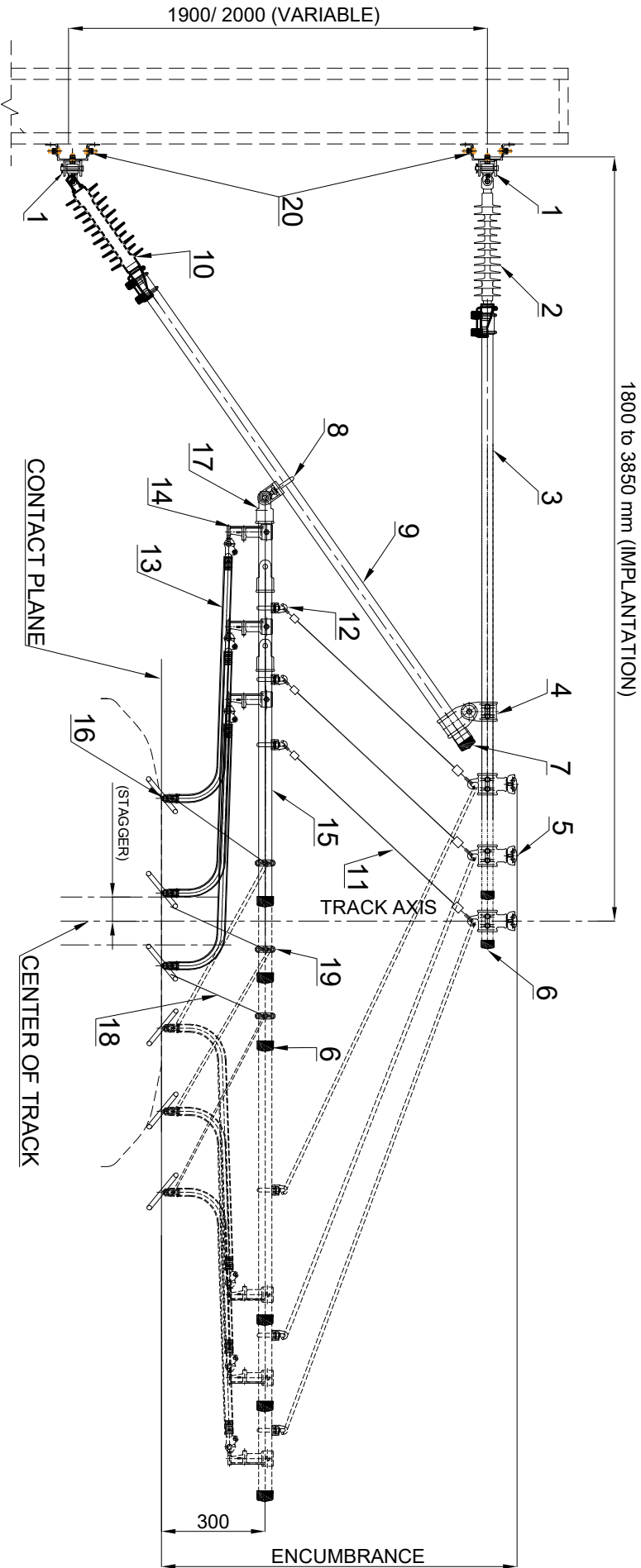
NOTES :

- 1. ALL DIMENSIONS ARE IN MM.
- 2. FITTING CONFIRM TO SPECIFICATION NO: TI/SPC/OHE/FITTINGS/0130(10/13) REV.1 OR LATEST.
- 3. ALL STANDARDS SHALL BE TAKEN LATEST. AND INDIAN & INTERNATIONAL STANDARDS ARE APPLICABLE WHEREVER REQUIRED.
- 4. HEIGHT OF CONTACT WIRE ABOVE RAIL LEVEL, TUBE LENGTH, STEADY ARM LENGTH, STAGGER DISTANCE & ASSEMBLY DIMENSIONS MAY VARY FOR AS PER SITE LOCATION & AS PER IMPLANTATION CHART.

REF. NO.	DESCRIPTION	PART NO.	MATERIAL	SPEC.	NUMBER OFF
1	MAST BRACKET ASSEMBLY	----	AL. ALLOY	AI/STMG0.6, UNE-EN1706/T6	2
2	STAY INSULATOR - 1600 CD (COMPOSITE) / 1050 CD (PORCELAIN)	----	SILICON RUBBER / PORCELAIN	TI/SPC/OHE/INS/1072 OR TI/SPC/OHE/INS0071	1
3	STAY TUBE (55 x 6 MM)	----	ALUMINUM	AW 6082 EN - 573 - 3	1
4	DOUBLE TUBE HOLDER	----	AL. ALLOY	AI/STMG0.6, UNE-EN1706/T6	1
5	CATENARY WIRE HOLDER CLAMP	----	AL. ALLOY	AI/STMG0.6, UNE-EN1706/T6	1
6	TUBE CAP (FOR 55 MM TUBE)	----	ALUMINUM	AW 6082 EN - 573 - 3	2
7	TUBE CAP (FOR 70 MM TUBE)	----	ALUMINUM	AW 6082 EN - 573 - 3	1
8	HOOK EYE	----	AL. ALLOY	AI/STMG0.6, UNE-EN1706/T6	1
9	BRACKET TUBE (70 x 6 MM)	----	ALUMINUM	AW 6082 EN - 573 - 3	1
10	BRACKET INSULATOR - 1600 CD (COMPOSITE) / 1050 CD (PORCELAIN)	----	SILICON RUBBER / PORCELAIN	TI/SPC/OHE/INS/1072 OR TI/SPC/OHE/INS0071	1
11	ANTI/WIND STAY CLAMP	----	AL. ALLOY	AI/STMG0.6, UNE-EN1706/T6	1
12	ANTI/WIND STAY WIRE	----	ST. STEEL	-----	1
13	REGISTER TUBE (55x 6 MM)	----	ALLUMINUM	AW 6082 EN - 573 - 3	1
14	HOOK CLIP	----	AL. ALLOY	AI/STMG0.6, UNE-EN1706/T6	1
15	REGISTER ARM DROPPER	----	ST. STEEL	-----	1
16	SWIVEL CLIP	----	COPPER	Cu ETP	1
17	ASSEMBLY SUPPORT FOR REGISTRATION	----	AL. ALLOY	AI/STMG0.6, UNE-EN1706/T6	1
18	NORMAL BENT STEADY ARM ASSEMBLY	----	AL. ALLOY	AI/STMG0.6, UNE-EN1706/T6	1
19	REGISTER ARM CLEVIS	----	AL. ALLOY	AI/STMG0.6, UNE-EN1706/T6	1

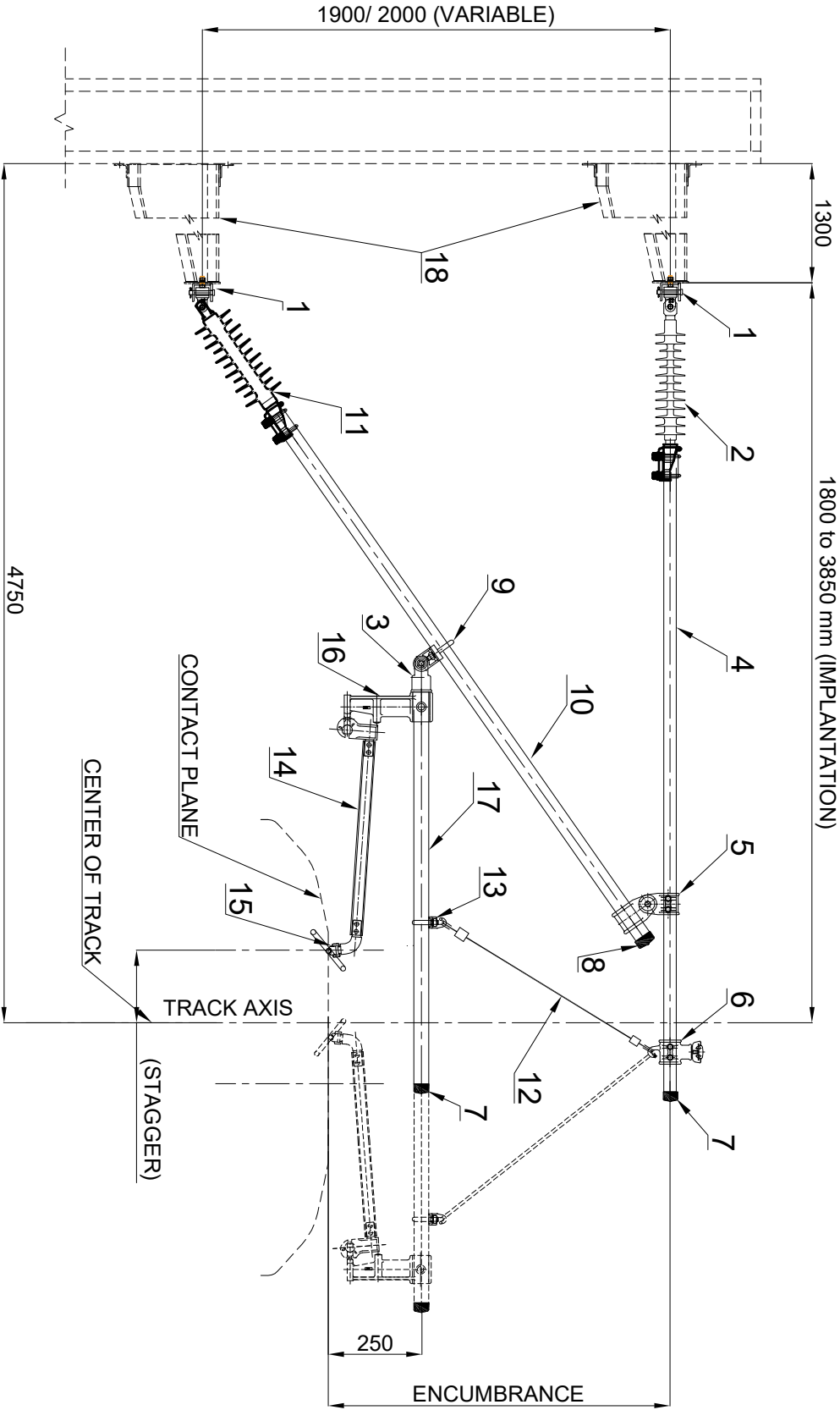
" THIS DRAWING IS THE PROPERTY OF RESEARCH DESIGNS AND STANDARDS ORGANISATION (MINISTRY OF RAILWAYS), LUCKNOW-226011, INDIA AND SHALL NOT BE USED, COPIED OR REPRODUCED IN PART OR WHOLE, WITHOUT PRIOR CONSENT IN WRITING."

MCA ASSEMBLY ON OVERLAP FOR SINGLE CANTILEVER			JDTI/OHE	AD/EOHE
DATE	MOD.	NATURE OF MOD.	INITIALS	DATE
			DR	
			TC	
			CK	
R. D. S. O.				REV.
T/IDRG/OHE/MCA/000X4/23/0				0.0
SCALE :- NTS				



- NOTES :
1. ALL DIMENSIONS ARE IN MM.
 2. FITTING CONFIRM TO SPECIFICATION NO: TI/SPC/OHE/FITTINGS/0130(10/13) REV.1 OR LATEST.
 3. ALL STANDARDS SHALL BE TAKEN LATEST. INDIAN & INTERNATIONAL STANDARDS ARE APPLICABLE WHEREVER REQUIRED.
 4. HEIGHT OF CONTACT WIRE ABOVE RAIL LEVEL, TUBE LENGTH, STEADY ARM LENGTH, STAGGER DISTANCE & ASSEMBLY DIMENSIONS MAY VARY FOR AS PER SITE LOCATION & AS PER IMPLANTATION CHART.

REF. NO.	DESCRIPTION	PART NO.	MATERIAL	SPEC.	NUMBE R OFF
1	MAST BRACKET ASSEMBLY	----	AL. ALLOY	ASITMg0.6, UNE-EN1706/T6	6
2	STAY INSULATOR - 1600 CD (COMPOSITE) / 1050 CD (PORCELAIN)	----	SILICON RUBBER / PORCELAIN	TI/SPC/OHE/INS/1072 OR TI/SPC/OHE/INS/0071	3
3	STAY TUBE (55 x 6 MM)	----	ALUMINIUM	AW 6082 EN - 573 - 3	3
4	DOUBLE TUBE HOLDER	----	AL. ALLOY	ASITMg0.6, UNE-EN1706/T6	3
5	CATENARY WIRE HOLDER CLAMP	----	AL. ALLOY	ASITMg0.6, UNE-EN1706/T6	3
6	TUBE CAP (FOR 55 MM TUBE)	----	ALUMINIUM	AW 6082 EN - 573 - 3	6
7	TUBE CAP (FOR 70 MM TUBE)	----	ALUMINIUM	EN - 573 - 3	3
8	HOOK EYE	----	AL. ALLOY	ASITMg0.6, UNE-EN1706/T6	6
9	BRACKET TUBE (70 x 6 MM)	----	ALUMINIUM	AW 6082 EN - 573 - 3	3
10	BRACKET INSULATOR - 1600 CD (COMPOSITE) / 1050 CD (PORCELAIN)	----	SILICON RUBBER / PORCELAIN	TI/SPC/OHE/INS/1072 OR TI/SPC/OHE/INS/0071	3
11	REGISTER ARM DROPPER	----	ST. STEEL	----	3
12	HOOK CLIP	----	AL. ALLOY	ASITMg0.6, UNE-EN1706/T6	3
13	NORMAL BENT STEADY ARM ASSEMBLY	----	AL. ALLOY	ASITMg0.6, UNE-EN1706/T6	3
14	DROP BRACKET	----	AL. ALLOY	ASITMg0.6, UNE-EN1706/T6	3
15	REGISTER TUBE (55x 6 MM)	----	ALUMINIUM	AW 6082 EN - 573 - 3	3
16	SWIVEL CLIP	----	COPPER	Cu ETP	3
17	REINFORCED THREADED CLEVIS (FOR 55 MM TUBE)	----	AL. ALLOY	ASITMg0.6, UNE-EN1706/T6	3
18	ANTIWIND STAY WIRE	----	ST. STEEL	----	1
19	ANTIWIND STAY CLAMP	----	AL. ALLOY	ASITMg0.6, UNE-EN1706/T6	1
20	MUL TIPLE CANTILEVER CROSS ARM ASSEMBLY	ETI/OHE/P-3120	STEEL GALV.	IS : 2062	2
" THIS DRAWING IS THE PROPERTY OF RESEARCH DESIGNS AND STANDARDS ORGANISATION (MINISTRY OF RAILWAYS), LUCKNOW-226011, INDIA AND SHALL NOT BE USED, COPIED OR REPRODUCED IN PART OR WHOLE, WITHOUT PRIOR CONSENT IN WRITING."					
MCA ASSEMBLY ON OVERLAP PULL OFF / PUSH OFF (MULTIPLE TRIPLE CANTILEVER)		JDTI-2			
		ADETI-2			
DATE	MOD.	NATURE OF MOD.	INITIALS	R. D. S. O.	
				DATE	NAME
				DR	TI/DRG/OHE/MCA/000X5/23/0
				TC	
			CK	SCALE :- N.T.S.	
					REV. 0.0



NOTES :

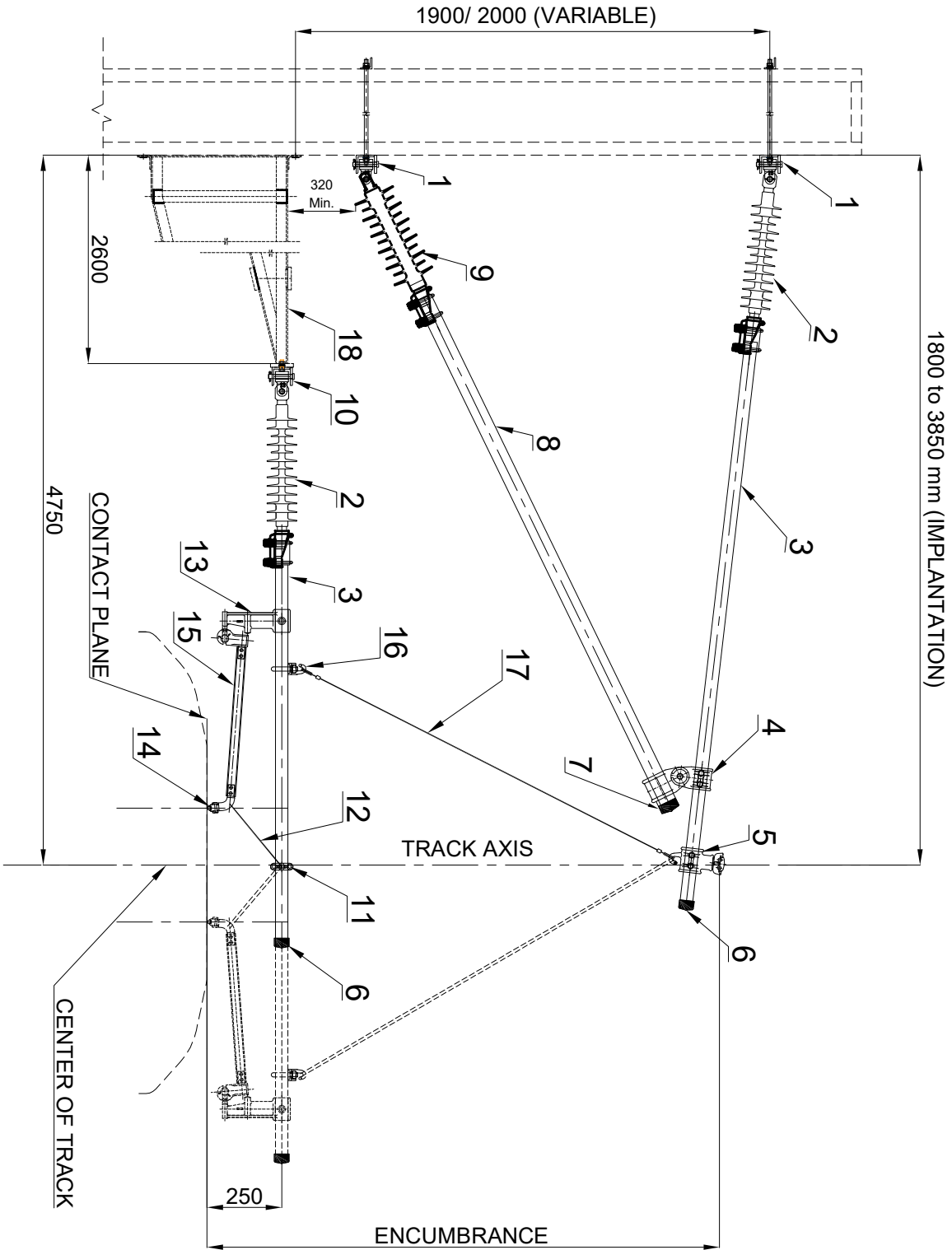
1. ALL DIMENSIONS ARE IN MM.
2. FITTING CONFIRM TO SPECIFICATION NO: TI/SPC/OHE/FITTINGS/0130(10/13) REV.1 OR LATEST.
3. ALL STANDARDS SHALL BE TAKEN LATEST. INDIAN & INTERNATIONAL STANDARDS ARE APPLICABLE WHEREVER REQUIRED.
4. HEIGHT OF CONTACT WIRE ABOVE RAIL LEVEL, TUBE LENGTH, STEADY ARM LENGTH, STAGGER DISTANCE & ASSEMBLY DIMENSIONS MAY VARY FOR AS PER SITE LOCATION & AS PER IMPLANTATION CHART.

REF. NO.	DESCRIPTION	PART NO.	MATERIAL	SPEC.	NUMBER OFF
1	MAST BRACKET ASSEMBLY	----	AL. ALLOY	ASTM A606.6, UNE-EN1706/T6	2
2	STAY INSULATOR - 1600 CD (COMPOSITE) / 1050 CD (PORCELAIN)	-----	SILICON RUBBER / PORCELAIN	TI/SPC/OHE/INS/1 072 OR TI/SPC/OHE/INS/0 071	1
3	REGISTER ARM CLEVIS	-----	AL. ALLOY	ASTM A606.6, UNE-EN1706/T6	1
4	STAY TUBE (55 x 6 MM)	-----	ALUMINUM	AW 6082 EN - 573 - 3	1
5	DOUBLE TUBE HOLDER	-----	AL. ALLOY	ASTM A606.6, UNE-EN1706/T6	1
6	CATENARY WIRE HOLDER CLAMP	-----	AL. ALLOY	ASTM A606.6, UNE-EN1706/T6	1
7	TUBE CAP (FOR 55 MM TUBE)	-----	ALUMINUM	AW 6082 EN - 573 - 3	2
8	TUBE CAP (FOR 70 MM TUBE)	-----	ALUMINUM	AW 6082 EN - 573 - 3	1
9	HOOK EYE	-----	AL. ALLOY	ASTM A606.6, UNE-EN1706/T6	2
10	BRACKET TUBE (70 x 6 MM)	-----	ALUMINUM	AW 6082 EN - 573 - 3	1
11	BRACKET INSULATOR - 1600 CD (COMPOSITE) / 1050 CD (PORCELAIN)	-----	SILICON RUBBER / PORCELAIN	TI/SPC/OHE/INS/1 072 OR TI/SPC/OHE/INS/0 071	1
12	REGISTER ARM DROPPER	-----	ST. STEEL	-----	1
13	HOOK CLIP	-----	AL. ALLOY	ASTM A606.6, UNE-EN1706/T6	1
14	BFB STEADY ARM ASSEMBLY	-----	AL. ALLOY	ASTM A606.6, UNE-EN1706/T6	1
15	SWIVEL CLIP	-----	COPPER	Cu ETP	1
16	DROP BRACKET	-----	COPPER	Cu - ETP	1
17	REGISTER TUBE (55x 6 MM)	-----	ALUMINUM	AW 6082 EN - 573 - 3	1
18	STAY ARM / BRACKET CHAIR	-----	STEEL GALV.	IS : 2062	2

" THIS DRAWING IS THE PROPERTY OF RESEARCH DESIGNS AND STANDARDS ORGANISATION (MINISTRY OF RAILWAYS), LUCKNOW-226011, INDIA AND SHALL NOT BE USED, COPIED OR REPRODUCED IN PART OR WHOLE, WITHOUT PRIOR CONSENT IN WRITING."

MCA ASSEMBLY ON RAIL LEVEL PLATFORM PULL OFF / PUSH OFF		JDTI-2	
		ADETI-2	

DATE	MOD.	NATURE OF MOD.	INITIALS	R. D. S. O.	
			DR	TI/DRG/OHE/MCA/000X6/23/0	REV. 0.0
			TC	SCALE :- N.T.S.	
			CK		



NOTES :

1. ALL DIMENSIONS ARE IN MM.
2. FITTING CONFIRM TO SPECIFICATION NO. TI/SPC/OHE/FITTINGS/0130(10/13) REV.1 OR LATEST.
3. ALL STANDARDS SHALL BE TAKEN LATEST. INDIAN & INTERNATIONAL STANDARDS ARE APPLICABLE WHEREVER REQUIRED.
4. HEIGHT OF CONTACT WIRE ABOVE RAIL LEVEL, TUBE LENGTH, STEADY ARM LENGTH, STAGGER DISTANCE & ASSEMBLY DIMENSIONS MAY VARY FOR AS PER SITE LOCATION & AS PER IMPLANTATION CHART.
5. FOR REF. NO. 18 REFER REGISTER ARM EXTENSION FRAME DRAWING NO. ET/OHE/ P/ 3110.

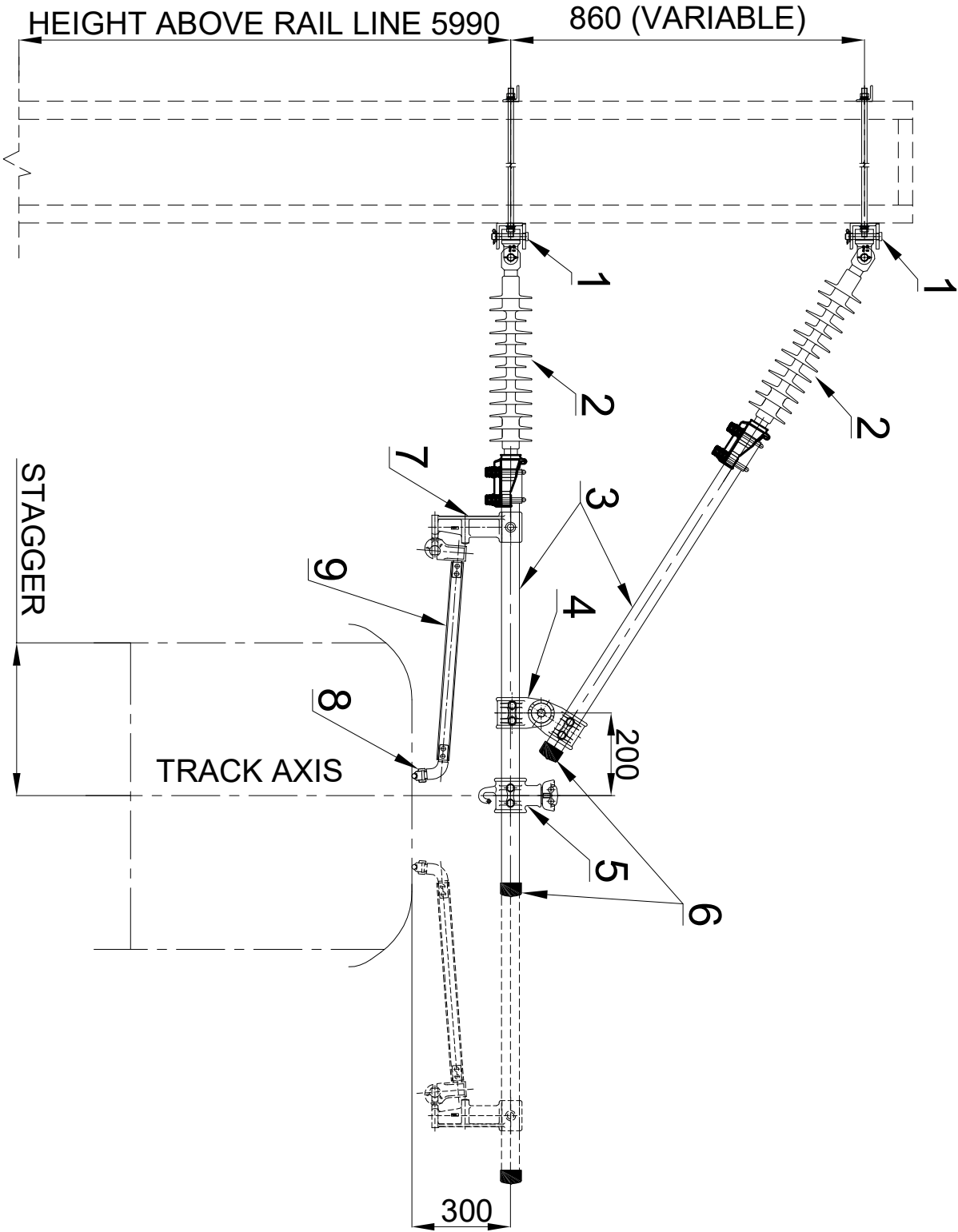
REF. NO.	DESCRIPTION	PART NO.	MATERIAL	SPEC.	NUMBE R OFF
1	MAST BRACKET ASSEMBLY	----	AL. ALLOY	ASi7Mg0.6, UNE-EN1706/T6	2
2	STAY INSULATOR - 1600 CD (COMPOSITE) / 1050 CD (PORCELAIN)	-----	SILICON RUBBER/ PORCELAIN	TI/SPC/OHE/INS/1 072 OR TI/SPC/OHE/INS/0 071	2
3	STAY TUBE (55 x 6 MM)	-----	ALLUMINUM	AW 6082 EN - 573 - 3	2
4	DOUBLE TUBE HOLDER	-----	AL. ALLOY	ASi7Mg0.6, UNE-EN1706/T6	1
5	CATENARY WIRE HOLDER CLAMP	-----	AL. ALLOY	ASi7Mg0.6, UNE-EN1706/T6	1
6	TUBE CAP (FOR 55 MM TUBE)	-----	ALLUMINUM	AW 6082 EN - 573 - 3	2
7	TUBE CAP (FOR 70 MM TUBE)	-----	ALLUMINUM	AW 6082 EN - 573 - 3	1
8	BRACKET TUBE (70 x 6 MM)	-----	ALLUMINUM	AW 6082 EN - 573 - 3	1
9	BRACKET INSULATOR - 1600 CD (COMPOSITE) / 1050 CD (PORCELAIN)	-----	SILICON RUBBER/ PORCELAIN	TI/SPC/OHE/INS/1 072 OR TI/SPC/OHE/INS/0 071	1
10	BRACKET ASSEMBLY WITH CLEVIS	-----	AL. ALLOY	ASi7Mg0.6, UNE-EN1706/T6	1
11	ANTIWIND STAY CLAMP	-----	AL. ALLOY	ASi7Mg0.6, UNE-EN1706/T6	1
12	ANTIWIND STAY WIRE	-----	ST. STEEL	-----	1
13	DROP BRACKET	-----	AL. ALLOY	ASi7Mg0.6, UNE-EN1706/T6	1
14	SWIVEL CLIP	-----	COPPER	Cu ETP	1
15	BFB STEADY ARM ASSEMBLY	-----	AL. ALLOY	ASi7Mg0.6, UNE-EN1706/T6	1
16	HOOK CLIP	-----	AL. ALLOY	ASi7Mg0.6, UNE-EN1706/T6	1
17	REGISTER ARM DROPPER	-----	ST. STEEL	-----	1
18	REGISTER ARM EXTENSION FRAME	ET/OHE/P/3110	STEEL GALV.	IS : 2062	1

" THIS DRAWING IS THE PROPERTY OF RESEARCH DESIGNS AND STANDARDS ORGANISATION (MINISTRY OF RAILWAYS), LUCKNOW-226011, INDIA AND SHALL NOT BE USED, COPIED OR REPRODUCED IN PART OR WHOLE, WITHOUT PRIOR CONSENT IN WRITING."

MCA ASSEMBLY ON HIGH LEVEL OR LOW LEVEL PLATFORM (PULL OFF / PUSH OFF)			JDTI-2	
			ADETI-2	

DATE	MOD.	NATURE OF MOD.	INITIALS	DATE	NAME	R. D. S. O.		REV.
					DR			0.0
					TC			
			CK					
						SCALE :- N.T.S.		

T/DRG/OHE/MCA/000X7/23/0		
--------------------------	--	--



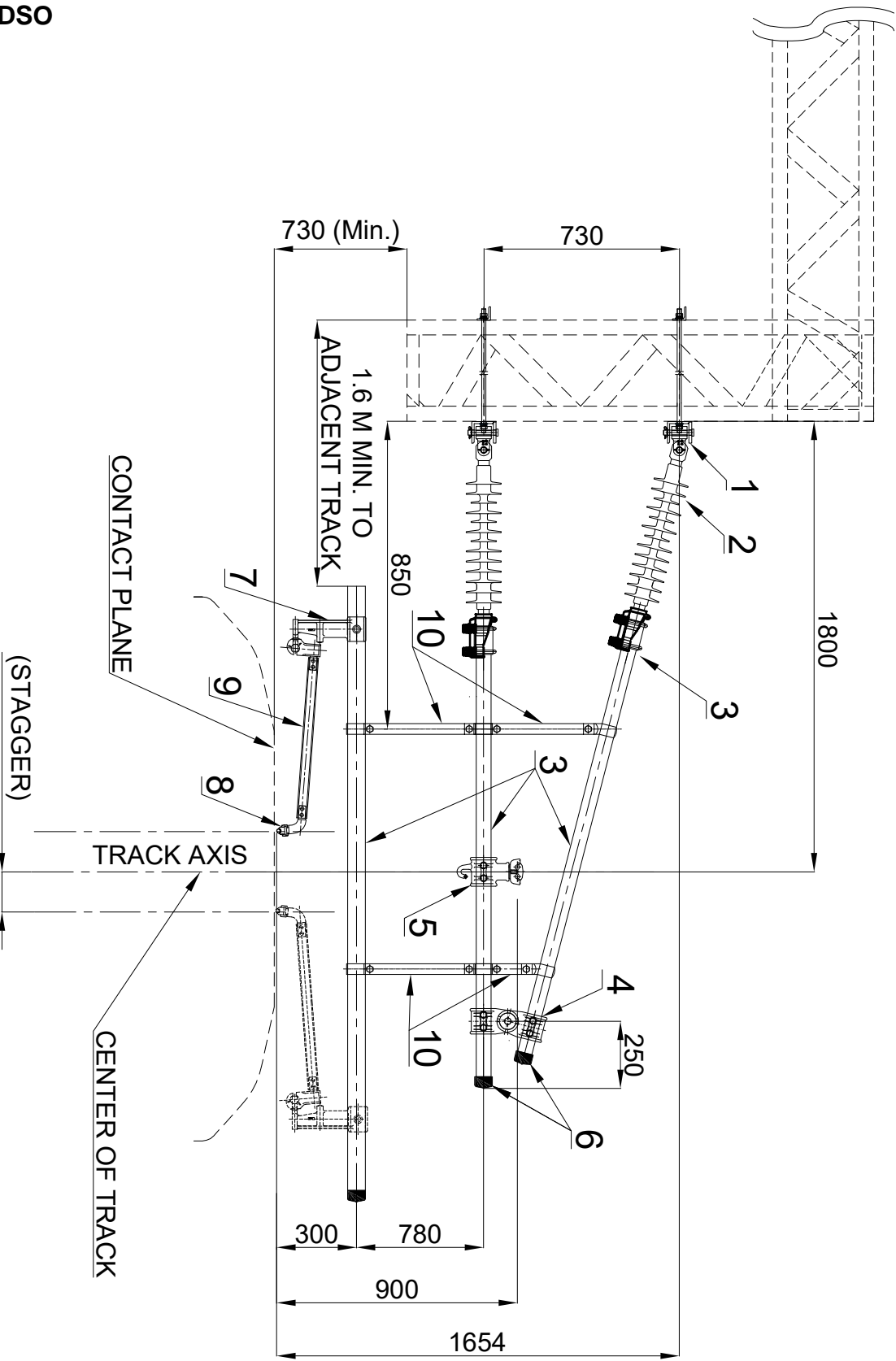
REF. NO.	DESCRIPTION	PART NO.	MATERIAL	SPEC.	NUMB ER OFF
1	MAST BRACKET ASSEMBLY	----	AL. ALLOY	AlSi7Mg0.6, UNE-EN1706/T6	2
2	STAY INSULATOR - 1600 CD (COMPOSITE) / 1050 CD (PORCELAIN)	-----	SILICON RUBBER / PORCELAIN	TI/SPC/OHE/INS/1072 OR TI/SPC/OHE/INS/0071	2
3	STAY TUBE (55 x 6 MM)	-----	ALLUMINIUM	AW 6082 EN - 573 - 3	2
4	DOUBLE TUBE HOLDER	-----	AL. ALLOY	AlSi7Mg0.6, UNE-EN1706/T6	1
5	CATENARY WIRE HOLDER CLAMP	-----	AL. ALLOY	AlSi7Mg0.6, UNE-EN1706/T6	1
6	TUBE CAP (FOR 55 MM TUBE)	-----	ALLUMINIUM	AW 6082 EN - 573 - 3	2
7	DROP BRACKET	-----	AL. ALLOY	AlSi7Mg0.6, UNE-EN1706/T6	1
8	SWIVEL CLIP	-----	COPPER	Cu ETP	1
9	BFB STEADY ARM ASSEMBLY	-----	AL. ALLOY	AlSi7Mg0.6, UNE-EN1706/T6	1

NOTES :

1. ALL DIMENSIONS ARE IN MM.
2. FITTING CONFIRM TO SPECIFICATION NO: TI/SPC/OHE/FITTINGS/0130(10/13) REV.1 OR LATEST.
3. ALL STANDARDS SHALL BE TAKEN LATEST. INDIAN & INTERNATIONAL STANDARDS ARE APPLICABLE WHEREVER REQUIRED.
4. HEIGHT OF CONTACT WIRE ABOVE RAIL LEVEL, TUBE LENGTH, STEADY ARM LENGTH, STAGGER DISTANCE & ASSEMBLY DIMENSIONS MAY VARY FOR AS PER SITE LOCATION & AS PER IMPLANTATION CHART.

" THIS DRAWING IS THE PROPERTY OF RESEARCH DESIGNS AND STANDARDS ORGANISATION (MINISTRY OF RAILWAYS), LUCKNOW-226011, INDIA AND SHALL NOT BE USED, COPIED OR REPRODUCED IN PART OR WHOLE, WITHOUT PRIOR CONSENT IN WRITING."

MCA ASSEMBLY ON TRAMWAY TYPE		JDTI-2	R . D . S . O.
		ADETI-2	
DATE	MOD.	NATURE OF MOD.	INITIALS
			DATE NAME
		DR	TI/DRG/OHE/MCA/000X8/23/0
		TC	SCALE :- N.T.S.
		CK	
			REV. 0.0



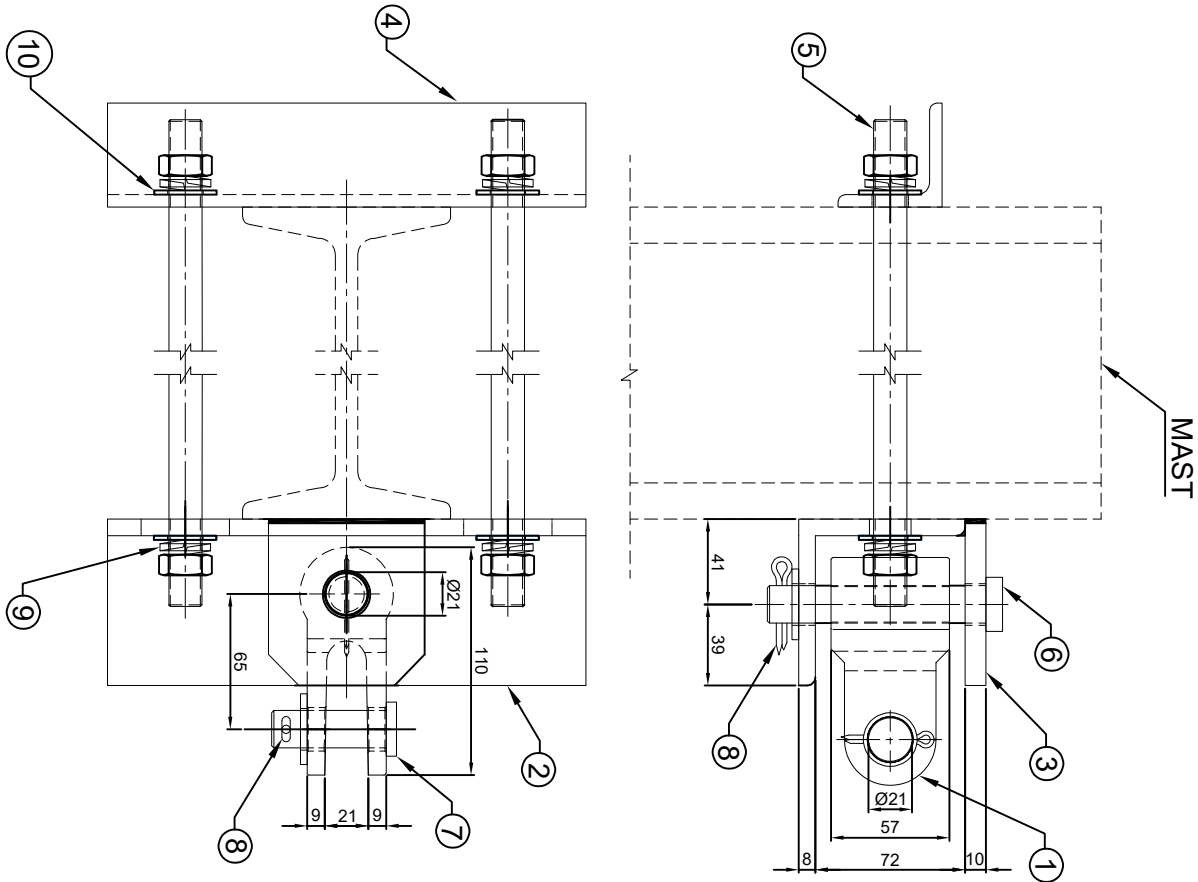
REF. NO.	DESCRIPTION	PART NO.	MATERIAL	SPEC.	NUMB ER OFF
1	MAST BRACKET ASSEMBLY	-----	AL. ALLOY	AlSi7Mg0.6, UNE-EN1706/T6	2
2	STAY INSULATOR - 1600 CD (COMPOSITE) / 1060 CD (PORCELAIN)	-----	SILICON RUBBER / PORCELAIN	TI/SPC/OHE/INS/1072 OR TI/SPC/OHE/INS/0071	2
3	STAY TUBE (55 x 6 MM)	-----	ALUMINUM	AW 6082 EN - 573 - 3	3
4	DOUBLE TUBE HOLDER	-----	AL. ALLOY	AlSi7Mg0.6, UNE-EN1706/T6	1
5	CATENARY WIRE HOLDER CLAMP	-----	AL. ALLOY	AlSi7Mg0.6, UNE-EN1706/T6	1
6	TUBE CAP (FOR 55 MM TUBE)	-----	ALUMINUM	AW 6082 EN - 573 - 3	2
7	DROP BRACKET	-----	AL. ALLOY	AlSi7Mg0.6, UNE-EN1706/T6	1
8	SWIVEL CLIP	-----	COPPER	Cu ETP	1
9	BFB STEADY ARM ASSEMBLY	-----	AL. ALLOY	AlSi7Mg0.6, UNE-EN1706/T6	1
10	DROP CLIP ASSEMBLY	-----	STEEL	TI/SPC/OHE/FITTING S/0130	4

NOTES :

1. ALL DIMENSIONS ARE IN MM.
2. FITTING CONFIRM TO SPECIFICATION NO: TI/SPC/OHE/FITTINGS/0130(10/13) REV.1 OR LATEST.
3. ALL STANDARDS SHALL BE TAKEN LATEST. INDIAN & INTERNATIONAL STANDARDS ARE APPLICABLE WHEREVER REQUIRED.
4. HEIGHT OF CONTACT WIRE ABOVE RAIL LEVEL, TUBE LENGTH, STEADY ARM LENGTH, STAGGER DISTANCE & ASSEMBLY DIMENSIONS MAY VARY FOR AS PER SITE LOCATION & AS PER IMPLANTATION CHART.

" THIS DRAWING IS THE PROPERTY OF RESEARCH DESIGNS AND STANDARDS ORGANISATION (MINISTRY OF RAILWAYS), LUCKNOW-226011, INDIA AND SHALL NOT BE USED, COPIED OR REPRODUCED IN PART OR WHOLE, WITHOUT PRIOR CONSENT IN WRITING."

MCA ASSEMBLY FOR BOX TYPE ARRANGEMENTS					JDTI-2		
					ADETI-2		
R . D . S . O.							
	NATURE OF MOD.	INITIALS	DATE		NAME		T/IDRG/OHE/MCA/000X9/23/0
				DR			
				TC			
				CK			
					SCALE :- N.T.S.		
					REV. 0.0		



REF.	DESCRIPTION	PART No.	MATERIAL	SPEC.	NUMBER OFF
1	SWIVEL WITH CLEVIS	---	AL. ALLOY	AISI7Mg0.6, UNE-EN1706/T6	1
2	FRONT ANGLE FOR MAST ATTACHMENT	---	STEEL GALV.	IS : 2062, GR A	1
3	FRONT ANGLE STRAP 10 X 75 X 78 MM	---	STEEL GALV.	IS : 2062	1
4	STANDARD BACKING ANGLE	---	STEEL GALV.	IS : 2062, GR A	1
5	STUD BOLT Ø16 X 378 / 85 MM WITH M16 NUT	---	STEEL GALV.	GR. 8.8	2
6	SNAP HEAD PIN Ø18 X 55 MM WITH M18 PLAIN WASHER	---	ST. STEEL	AISI 304	1
7	SNAP HEAD PIN Ø18 X 105 MM WITH M18 PLAIN WASHER	---	ST. STEEL	AISI 304	1
8	SPLIT PIN Ø4 MM	---	ST. STEEL	AISI 304	2
9	M16 SPRING WASHER	---	ST. STEEL	AISI 304	4
10	M16 PLAIN WASHER	---	ST. STEEL	AISI 304	4

NOTES:

1. ALL DIMENSIONS ARE IN MM.
2. FITTING CONFIRM TO SPECIFICATION NO. T/SPC/OHE/FITTINGS/0130(10/13) REV.1 OR LATEST.
3. FASTENERS CONFIRM TO SPECIFICATION NO. T/SPC/OHE/FASTENERS/0120 REV.01 OR LATEST.
4. ALL STANDARDS SHALL BE TAKEN LATEST. AND INDIAN & INTERNATIONAL STANDARDS ARE APPLICABLE WHEREVER REQUIRED.
5. MARKING DETAILS : MANUFACTURER INITIAL MONOGRAM, PART NO, MONTH & YEAR OF MANUFACTURE TO BE PROVIDED.
6. ALL DIMENSIONS OF FABRICATED PARTS ARE APPLICABLE AFTER GALVANIZING.

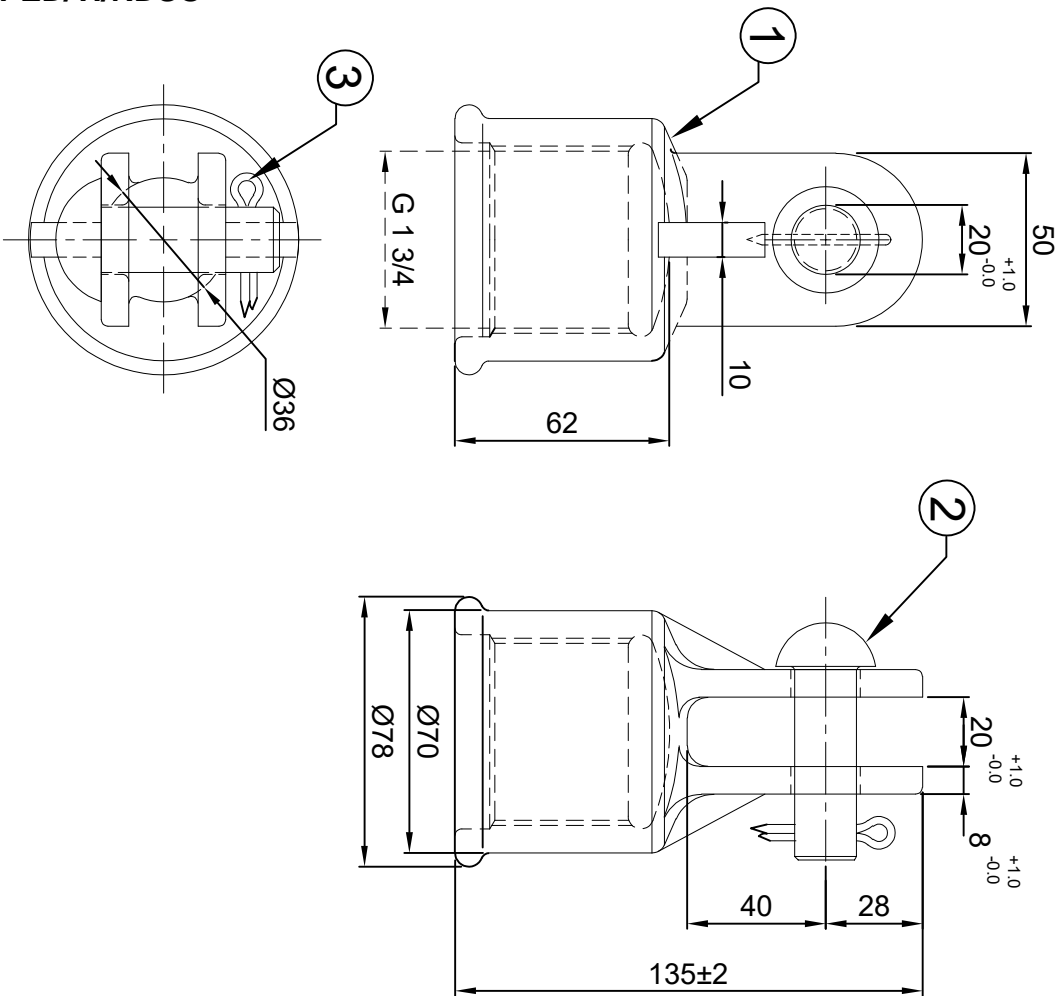
" THIS DRAWING IS THE PROPERTY OF RESEARCH DESIGNS AND STANDARDS ORGANISATION (MINISTRY OF RAILWAYS), LUCKNOW-226011, INDIA AND SHALL NOT BE USED, COPIED OR REPRODUCED IN PART OR WHOLE, WITHOUT PRIOR CONSENT IN WRITING."

MAST BRACKET
ASSEMBLY

JDTI-2
ADETTI-2

R. D. S. O.

DATE	MOD.	NATURE OF MOD.	INITIALS	DATE	NAME	T/DRG/OHE/MCA/000X10/23/0	REV.
				DR			0.0
				TC		SCALE :- N.T.S.	
				CK			



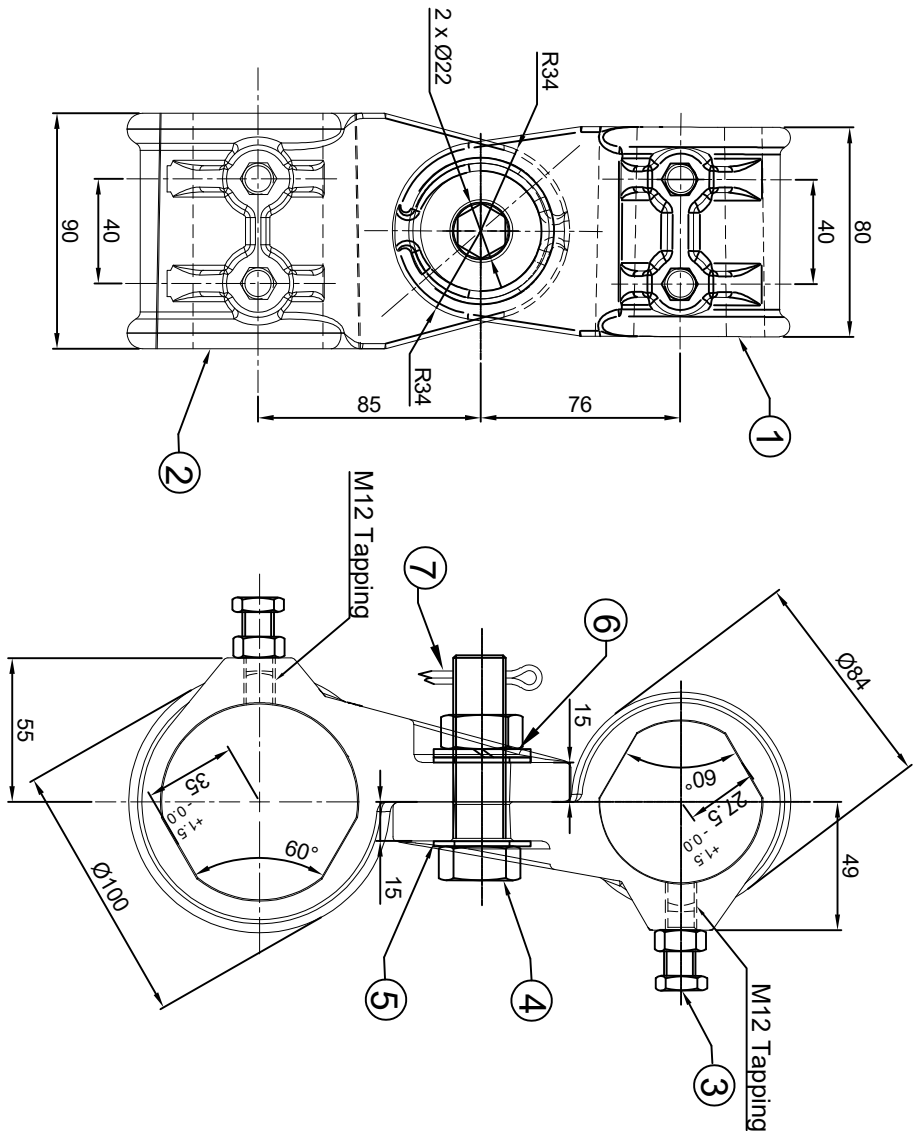
REF.	DESCRIPTION	PART NO.	MATERIAL	SPEC.	NUMBER OFF
1	REINFORCED THREADED CLEVIS (TUBE 55 MM)	-----	AL. ALLOY	AISI/Mg0.6 UNE-EN 1706/76	1
2	SNAP HEAD PIN Ø18 x 55 MM	-----	AL. ALLOY	AW - 6082	1
3	SPLIT PIN Ø4	-----	ST. STEEL	AISI 304	1

NOTES :

1. ALL DIMENSIONS ARE IN MM.
2. FITTING CONFIRM TO SPECIFICATION NO: TT/SPC/OHE/FITTINGS/0130(10/13) REV.1 OR LATEST.
3. FASTENERS CONFIRM TO SPECIFICATION NO. TT/SPC/OHE/FASTENERS/0120 REV.01 OR LATEST.
4. ALL STANDARDS SHALL BE TAKEN LATEST. AND INDIAN & INTERNATIONAL STANDARDS ARE APPLICABLE WHEREVER REQUIRED.
5. MARKING DETAILS : MANUFACTURER INITIAL MONOGRAM, PART NO, MONTH & YEAR OF MANUFACTURE TO BE PROVIDED.
6. THREAD PROFILE SHOULD BE ISO METRIC.

" THIS DRAWING IS THE PROPERTY OF RESEARCH DESIGNS AND STANDARDS ORGANISATION (MINISTRY OF RAILWAYS), LUCKNOW-226011, INDIA AND SHALL NOT BE USED, COPIED OR REPRODUCED IN PART OR WHOLE, WITHOUT PRIOR CONSENT IN WRITING."

REGISTER ARM CLEVIS					R. D. S. O.				
ADET1-2					T/DRG/OHE/MCA 000X11/23/0				
JD11-2					SCALE :- N.T.S.				
DATE	MOD.	NATURE OF MOD.	INITIALS	DATE	NAME	REV.	0.0		
					DR				
					TC				
					CK				

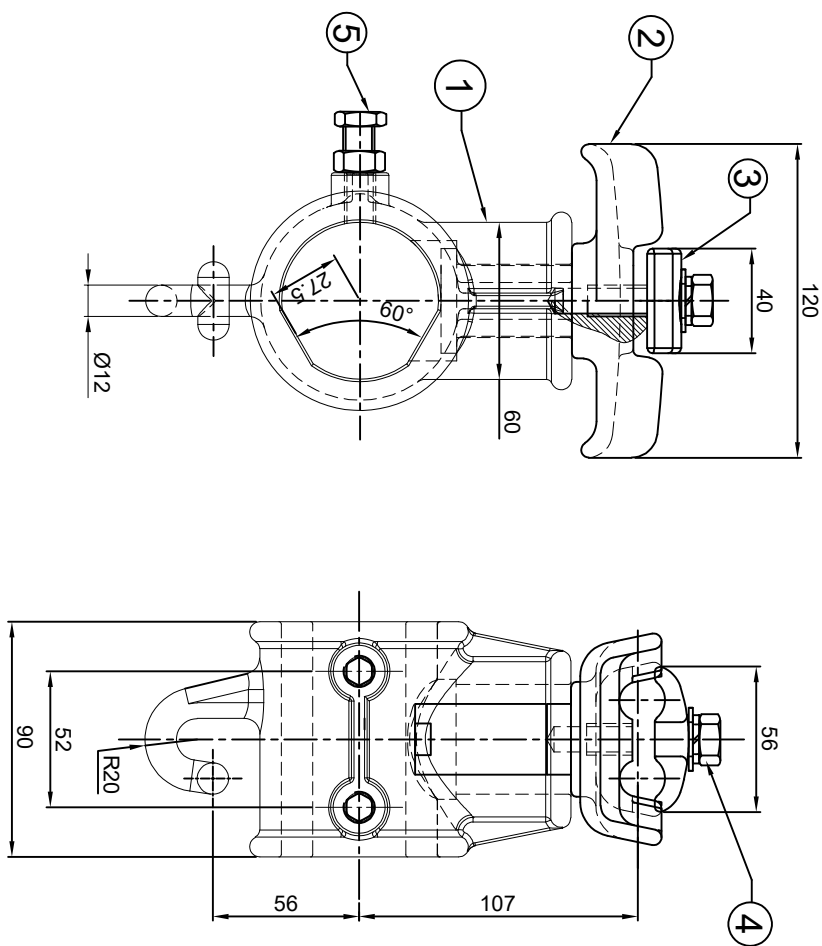


REF.	DESCRIPTION	PART No.	MATERIAL	SPEC.	NUMBER OFF
1	HALF TUBE ROTATIONAL JOINT FOR 55 MM TUBE	----	AL. ALLOY	AS17M00.6 UNE-EN1706/T6	1
2	HALF TUBE ROTATIONAL JOINT FOR 70 MM TUBE	----	AL. ALLOY	AS17M00.6 UNE-EN1706/T6	1
3	HEX BOLT & NUT M12 X 35	----	ST. STEEL	AS13 304	4
4	BOLT & NUT M20 X 70	----	ST. STEEL	AS13 304	1
5	M20 PLAIN WASHER	----	ST. STEEL	AS13 304	1
6	M20 SPRING WASHER	----	ST. STEEL	AS13 304	1
7	SPLIT PIN Ø4	----	ST. STEEL	AS13 304	1

- NOTES:
- ALL DIMENSIONS ARE IN MM.
 - FITTING CONFIRM TO SPECIFICATION NO. T/SPC/OHE/FITTINGS/0130(10/13) REV.1 OR LATEST.
 - FASTENERS CONFIRM TO SPECIFICATION NO. T/SPC/OHE/FASTENERS/0120 REV.01 OR LATEST.
 - ALL STANDARDS SHALL BE TAKEN LATEST, AND INDIAN & INTERNATIONAL STANDARDS ARE APPLICABLE WHEREVER REQUIRED.
 - MARKING DETAILS : MANUFACTURER INITIAL MONOGRAM, PART NO. MONTH & YEAR OF MANUFACTURE TO BE PROVIDED.

"THIS DRAWING IS THE PROPERTY OF RESEARCH DESIGNS AND STANDARDS ORGANISATION (MINISTRY OF RAILWAYS), LUCKNOW-226011, INDIA AND SHALL NOT BE USED, COPIED OR REPRODUCED IN PART OR WHOLE, WITHOUT PRIOR CONSENT IN WRITING."

DOUBLE TUBE HOLDER				
JDTI-2				
ADETI-2				
R. D. S. O.				
DATE	MOD.	NATURE OF MOD.	INITIALS	REV.
			DATE	NAME
			DR	
			TC	
			CK	
T/DRG/OHE/MCA/000X12/23/0				SCALE :- N.T.S.



REF.	DESCRIPTION	PART No.	MATERIAL	SPEC.	NUMBER OFF
1	CATERNARY WIRE SUPPORT BODY FOR (55 MM TUBE)	*****	AL ALLOY	AISI7Mg0.6, UNE-EN1706/76	1
2	CATERNARY WIRE SUPPORT	*****	AL ALLOY	AISI7Mg0.6, UNE-EN1706/76	1
3	CATERNARY WIRE SUPPORT COVER	*****	AL ALLOY	AISI7Mg0.6, UNE-EN1706/76	1
4	BOLT M12 X 40 WITH NUT AND PW & SW	*****	ST. STEEL	AISI 304	1
5	BOLT V-ENDED 12 X 38P WITH NUT	*****	ST. STEEL	AISI 304	2

NOTES:

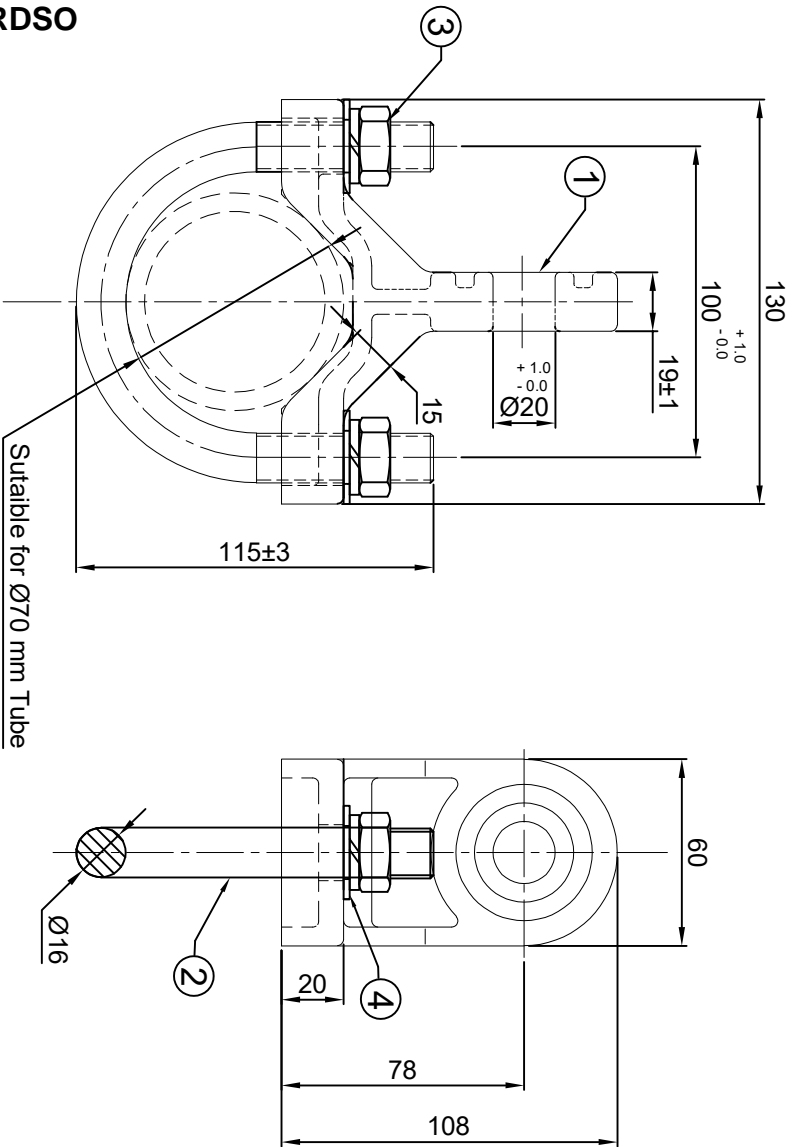
1. ALL DIMENSIONS ARE IN MM.
2. FITTING CONFIRM TO SPECIFICATION NO. TI/SPC/OHE/FITTING/0130/(0/13) REV.1 OR LATEST
3. FASTENERS CONFIRM TO SPECIFICATION NO. TI/SPC/OHE/FASTENERS/0120 REV.01 OR LATEST
4. ALL STANDARDS SHALL BE TAKEN LATEST AND INDIAN & INTERNATIONAL STANDARDS ARE APPLICABLE WHEREVER REQUIRED
5. MARKING DETAILS : MANUFACTURER INITIAL MONOGRAM, PART NO, MONTH & YEAR OF MANUFACTURE TO BE PROVIDED

* THIS DRAWING IS THE PROPERTY OF RESEARCH DESIGNS AND STANDARDS ORGANISATION (MINISTRY OF RAILWAYS), LUCKNOW-226011, INDIA AND SHALL NOT BE USED, COPIED OR REPRODUCED IN PART OR WHOLE, WITHOUT PRIOR CONSENT IN WRITING."

CATENARY WIRE HOLDER CLAMP

JDTI-2	
ADETI-2	

R.D.S.O.					
DATE	MOD.	NATURE OF MOD.	INITIALS		
				DATE	NAME
				DR	T/IDRG/OHE/MCA/000X13/23/0
				TC	SCALE :- N.T.S.
				CK	
					REV. 0.0



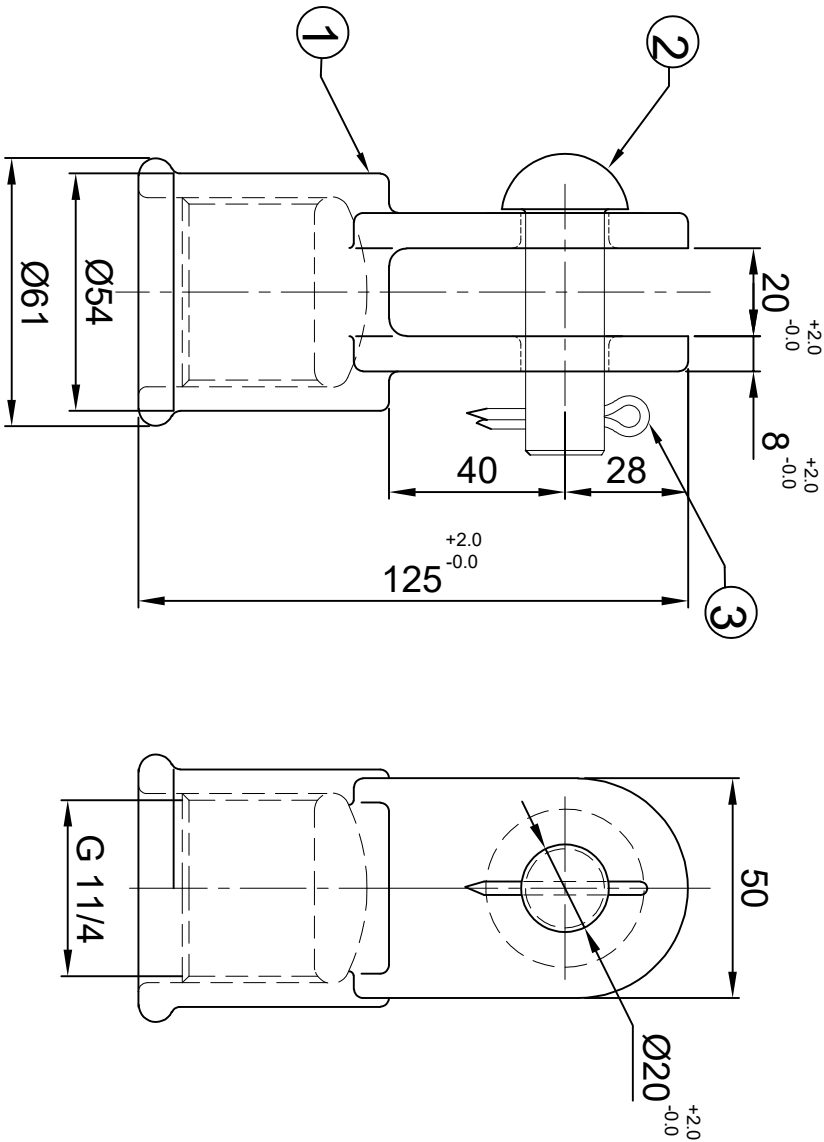
REF.	DESCRIPTION	PART No.	MATERIAL	SPEC.	NUMBER OFF
1	EYE JOINT (70 - 80 MM)	----	AL. ALLOY	ASTM90.6 UNE-ENT70876	1
2	" U" BOLT M16 x 100 x 115 MM	----	ST. STEEL	AISI 304	1
3	NUT M16	----	ST. STEEL	AISI 304	2
4	SPRING WASHER & PLAIN WASHER	----	ST. STEEL	AISI 304	2

NOTES :

1. ALL DIMENSIONS ARE IN MM.
2. FITTING CONFIRM TO SPECIFICATION NO. : T/SPC/OHE/FITTINGS/0130(10/13)
3. REV./1 OR LATEST.
4. FASTENERS CONFIRM TO SPECIFICATION NO. T/SPC/OHE/FASTENERS/0120
REV/01 OR LATEST.
5. ALL STANDARDS SHALL BE TAKEN LATEST. AND INDIAN & INTERNATIONAL
MARKING DETAILS : MANUFACTURER INITIAL MONOGRAM, PART NO, MONTH &
YEAR OF MANUFACTURE TO BE PROVIDED.

" THIS DRAWING IS THE PROPERTY OF RESEARCH DESIGNS AND STANDARDS ORGANISATION (MINISTRY OF RAILWAYS), LUCKNOW-226011. INDIA AND SHALL NOT BE USED. COPIED OR REPRODUCED IN PART OR WHOLE, WITHOUT PRIOR CONSENT IN WRITING."

HOOK EYE FOR 70 MM TUBE				R. D. S. O.			
JDT-1-2		ADET-1-2					
DATE	MOD.	NATURE OF MOD.	INITIALS	DATE	NAME	T/DRG/OHE/MCA/000X14/23/0	REV.
				DR			0.0
				TC		SCALE :- N.T.S.	
				CK			



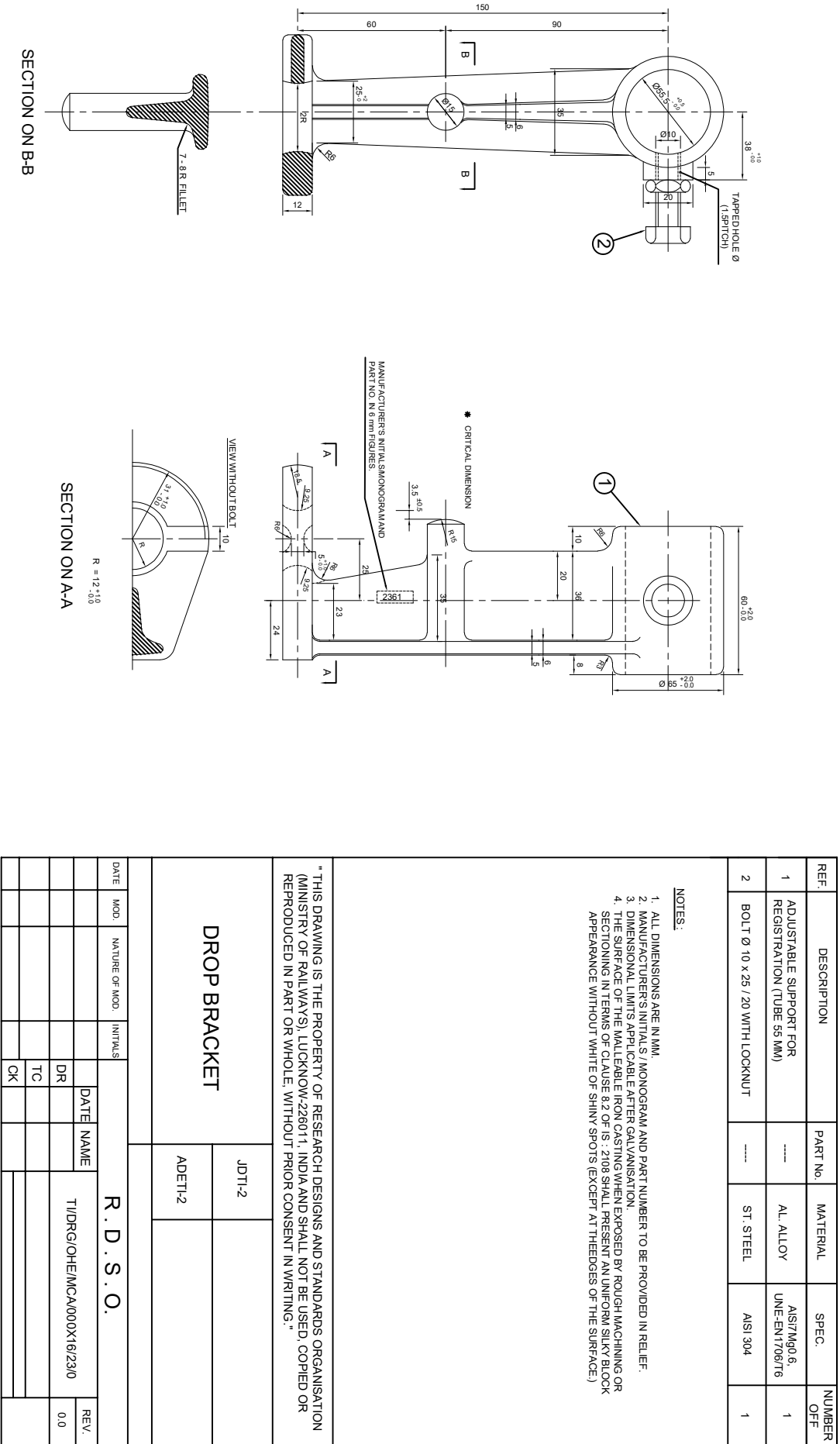
REF.	DESCRIPTION	PART No.	MATERIAL	SPEC.	NUMBER OFF
1	EYE JOINT (70 - 80 MM)	---	AL. ALLOY	AIS/7M60.6, UNE-EN1706/T6	1
2	SNAP HEAD PIN Ø18 x 55 MM	---	AL. ALLOY	AV 6062	1
3	SPLIT PIN Ø4 x 36 MM	---	ST. STEEL	AISI 304	1

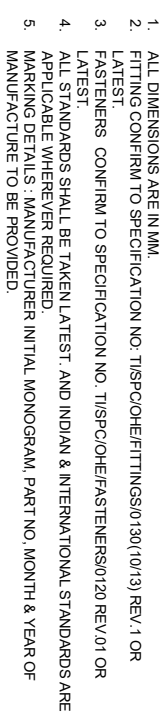
NOTES:

- ALL DIMENSIONS ARE IN MM.
 - TOLERANCES ARE ±0.5MM FOR DIMENSIONS LESS THAN 35MM AND 1.5% FOR DIMENSIONS MORE THAN 35MM.
 - FITTING CONFIRM TO SPECIFICATION NO: TISPC/OHE/FITTINGS/0130(10/13) REV.1 OR LATEST.
 - FASTENERS CONFIRM TO SPECIFICATION NO. TISPC/OHE/FASTENERS/0120 REV.01 OR LATEST.
 - ALL STANDARDS SHALL BE TAKEN LATEST. AND INDIAN & INTERNATIONAL STANDARDS ARE APPLICABLE WHEREVER REQUIRED.
 - MARKING DETAILS : MANUFACTURER INITIAL MONOGRAM, PART NO, MONTH & YEAR OF MANUFACTURE TO BE PROVIDED.
1. SAFE WORKING LOAD (KN) :- 16.5
2. BREAKING LOAD (KN) :- 50

" THIS DRAWING IS THE PROPERTY OF RESEARCH DESIGNS AND STANDARDS ORGANISATION (MINISTRY OF RAILWAYS), LUCKNOW-226011, INDIA AND SHALL NOT BE USED, COPIED OR REPRODUCED IN PART OR WHOLE, WITHOUT PRIOR CONSENT IN WRITING."

THREADED CLEVIS ASSEMBLY FOR 42 MM TUBE				R. D. S. O.			
DATE	MOD.	NATURE OF MOD.	INITIALS	DATE	NAME	REV.	REV.
				DR			0.0
				TC			
			CK				
				TIDRG/OHE/MCA/000X15/23/0			
				SCALE :- 1:1			





"THIS DRAWING IS THE PROPERTY OF RESEARCH DESIGNS AND STANDARDS ORGANISATION (MINISTRY OF RAILWAYS), LUCKNOW-226011, INDIA AND SHALL NOT BE USED, COPIED OR REPRODUCED IN PART OR WHOLE, WITHOUT PRIOR CONSENT IN WRITING."

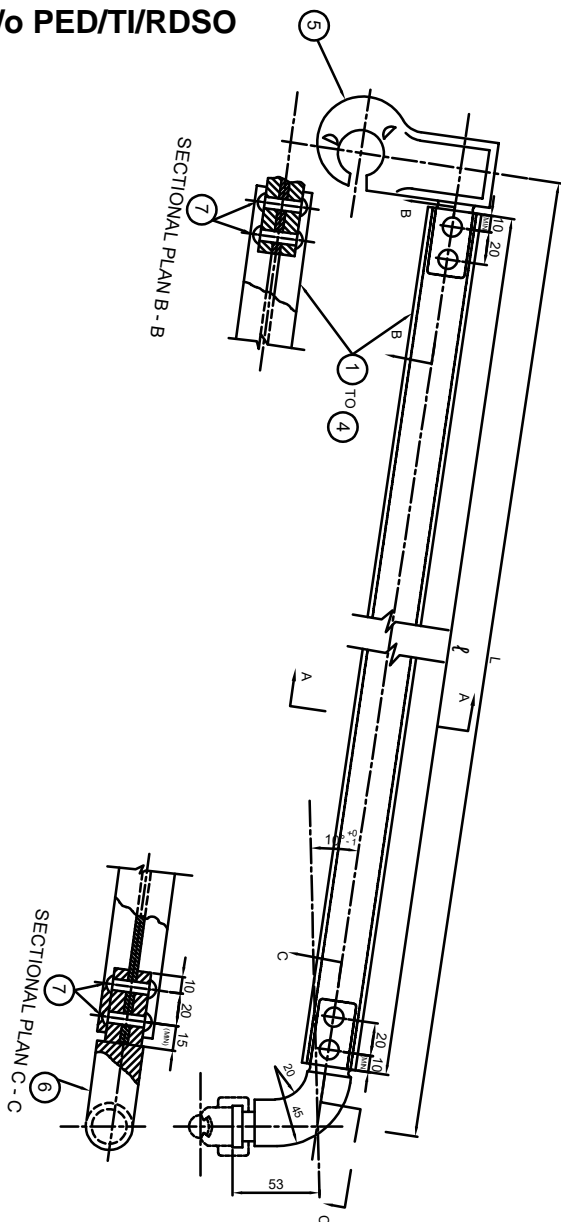
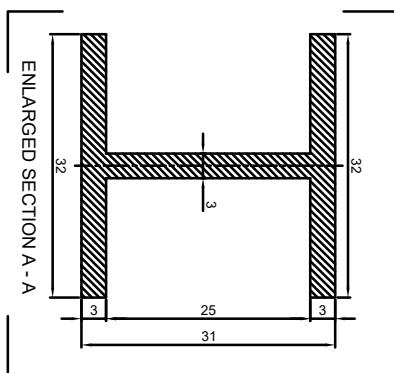
JD TI-2

DATE	NAME

[illegible]

REF. NO.	IDENTIFICATION NO.	LENGTH L OF STEADY ARM ASSEMBLY (m)	LENGTH ℓ OF STEADY ARM ASSEMBLY (m)	IDENTIFICATION OF STEADY ARM
1	2380/01	0.75	0.89	2544-5
2	2380/02	0.95	0.89	2544-6
3	2380/03	1.15	1.09	2544-7
4	2380/04	1.35	1.29	2544-8

TABLE 1.0



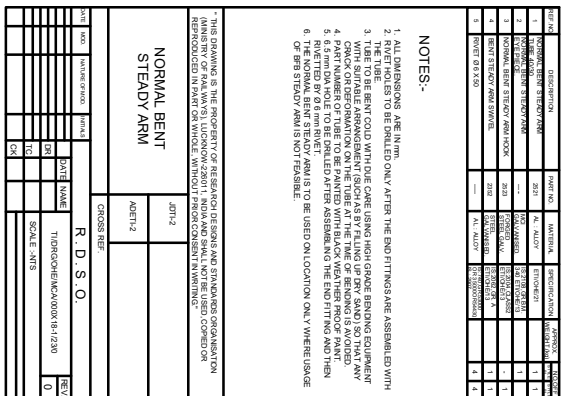
REF.	DESCRIPTION	PART NO.	MATERIAL	SPECIFICATION	APPROX WT. (KG)	NUMBER OFF
4	BFB STEADY ARM	SEE TABLE 10	ALUMINIUM	EN-4092/T6 UN-EN 573	1	1
5	STEADY ARM HOOK (BFB)	2391	ALUMINIUM ALLOY	A5187M90.6. UNE-EN1708T6	1	1
6	BFB STEADY ARM SWIVEL	2392	ALUMINIUM ALLOY	A5187M90.6. UNE-EN1708T6	1	1
7	RIVET Ø 6 X 35		ALUMINIUM ALLOY	EN - A47 - 6062 UNE - EN 573		4

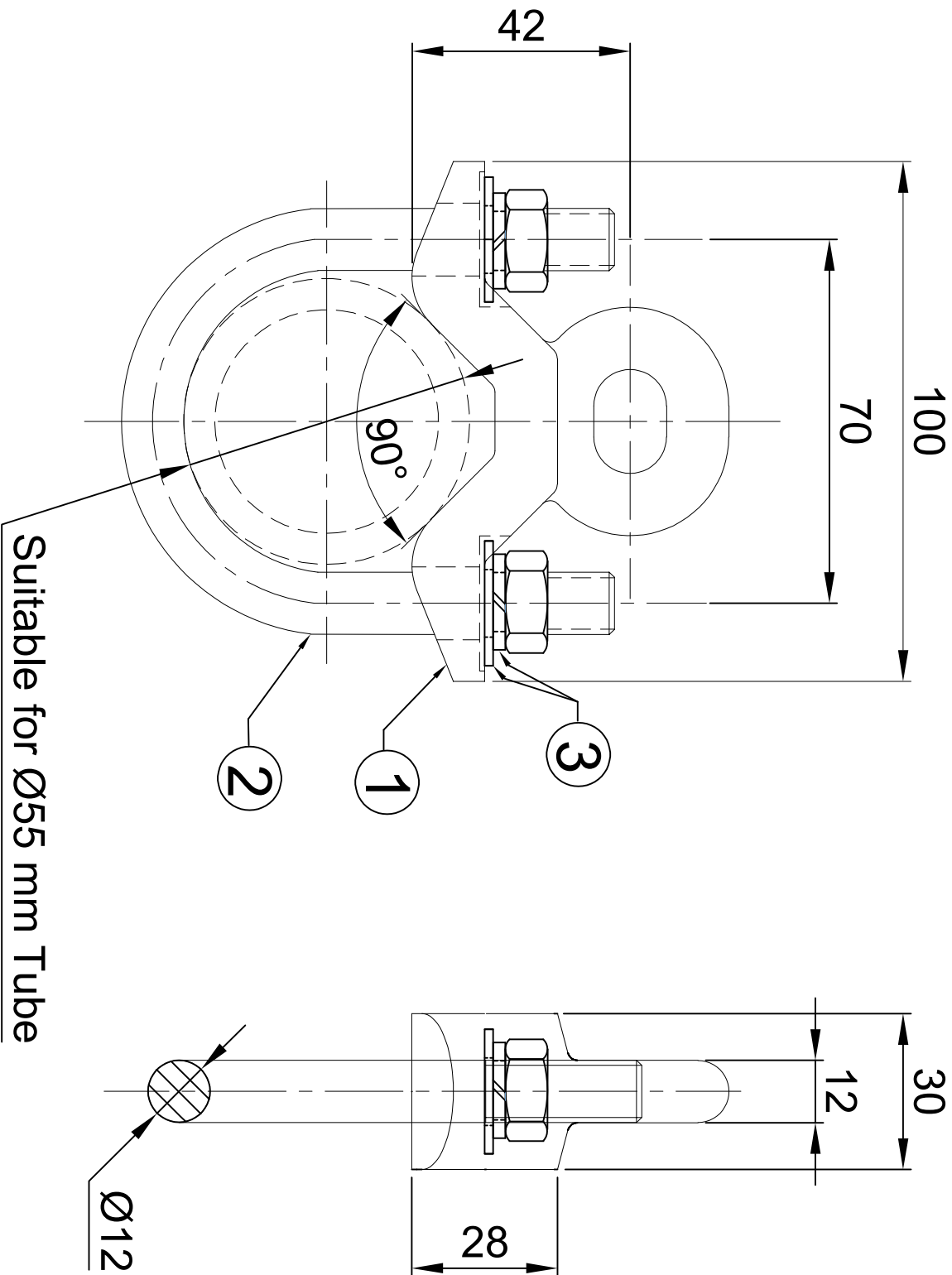
NOTES:

1. ALL DIMENSIONS ARE IN MM.
2. DRILLING AND RIVETTING TO BE DONE AFTER ASSEMBLING THE END FITTINGS TO THE STEADY ARM.

" THIS DRAWING IS THE PROPERTY OF RESEARCH DESIGNS AND STANDARDS ORGANISATION (MINISTRY OF RAILWAYS), LUCKNOW-226011, INDIA AND SHALL NOT BE USED, COPIED OR REPRODUCED IN PART OR WHOLE, WITHOUT PRIOR CONSENT IN WRITING."

BFB STEADY ARM					
			JDTL-2		
			ADETL-2		
R.D.S.O.					
DATE	MOD.	NATURE OF MOD.	INITIALS		
				DATE	NAME
			DR		T/D RG/OHE/MCA000X18/Z310
			TC		SCALE :- 1:1
			CK		SUB - SCALE
					SUB - SCALE
					REV. 0.0





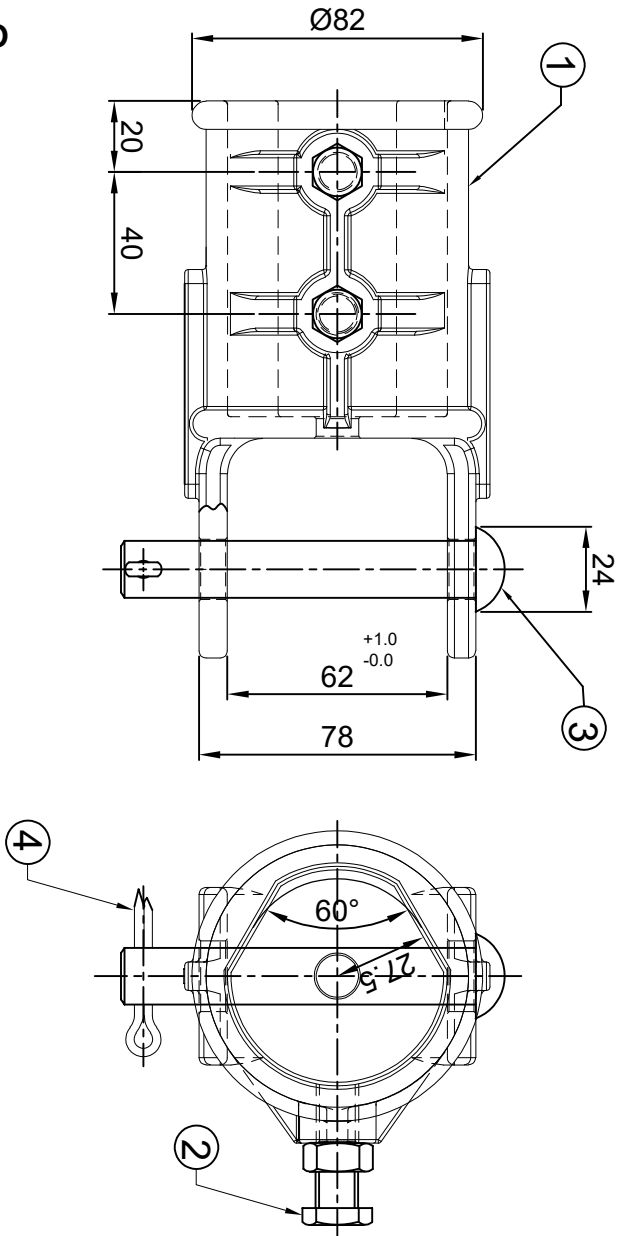
REF.	DESCRIPTION	PART No.	MATERIAL	SPEC.	NUMBER OFF
1	ANTI WIND STAY CLAMP (FOR TUBE 42-55 MM)	----	AL. ALLOY	ASi7Mg0.6, UNE-EN1706/T6	1
2	" U" BOLT WITH NUT M12 x 70 x 95 MM	----	ST. STEEL	AISI - 304	1
3	M12 SPRING & PLAIN WASHER	----	ST. STEEL	AISI - 304	2

NOTES :

1. ALL DIMENSIONS ARE IN MM.
2. FITTING CONFIRM TO SPECIFICATION NO: TI/SPC/OHE/FITTINGS/0130(10/13) REV.1 OR LATEST.
3. FASTENERS CONFIRM TO SPECIFICATION NO. TI/SPC/OHE/FASTENERS/0120 REV.01 OR LATEST.
4. ALL STANDARDS SHALL BE TAKEN LATEST. AND INDIAN & INTERNATIONAL STANDARDS ARE APPLICABLE WHEREVER REQUIRED.
5. MARKING DETAILS : MANUFACTURER INITIAL MONOGRAM, PART NO, MONTH & YEAR OF MANUFACTURE TO BE PROVIDED.

" THIS DRAWING IS THE PROPERTY OF RESEARCH DESIGNS AND STANDARDS ORGANISATION (MINISTRY OF RAILWAYS), LUCKNOW-226011. INDIA AND SHALL NOT BE USED, COPIED OR REPRODUCED IN PART OR WHOLE, WITHOUT PRIOR CONSENT IN WRITING."

ANTI WIND STAY CLAMP ASSEMBLY				JDTI-2		
				ADETI-2		
R. D. S. O.						
DATE	MOD.	NATURE OF MOD.	INITIALS	DATE	NAME	REV. 0.0
				DR		
				TC		
				CK		
				SCALE :- N.T.S.		



REF.	DESCRIPTION	PART No.	MATERIAL	SPEC.	NUMBER OFF
1	SUPPORT FOR REGISTRATION TUBE	-----	AL. ALLOY	ASTM90.6 UNE-EN1708T6	1
2	BOL T M12 x 35 WITH CHECK NUT	-----	ST. STEEL	AISI 304	2
3	SNAP HEAD PIN Ø16 x 100 mm	-----	AL. ALLOY	EN - AW 6082	1
4	SPLIT PIN Ø4 x 40 MM	-----	ST. STEEL	AISI 304	1

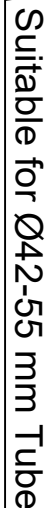
NOTES:

1. ALL DIMENSIONS ARE IN MM.
2. TOLERANCES ARE ±0.5MM FOR DIMENSIONS LESS THAN 35MM AND 1.5% FOR DIMENSIONS MORE THAN 35MM.
3. FITTING CONFIRM TO SPECIFICATION NO. TT/SPC/OHE/FITTINGS/0130(10/13)REV.1 OR LATEST.
4. FASTENERS CONFIRM TO SPECIFICATION NO. TT/SPC/OHE/FASTENERS/0120 REV.01 OR LATEST.
5. ALL STANDARDS SHALL BE TAKEN LATEST, AND INDIAN & INTERNATIONAL STANDARDS ARE APPLICABLE WHEREVER REQUIRED.
6. MARKING DETAILS - MANUFACTURER INITIAL MONOGRAM, PART NO, MONTH & YEAR OF MANUFACTURE TO BE PROVIDED.

" THIS DRAWING IS THE PROPERTY OF RESEARCH DESIGNS AND STANDARDS ORGANISATION (MINISTRY OF RAILWAYS), LUCKNOW-226011, INDIA AND SHALL NOT BE USED, COPIED OR REPRODUCED IN PART OR WHOLE, WITHOUT PRIOR CONSENT IN WRITING."

ASSEMBLY SUPPORT FOR
REGISTRATION TUBE

ASSEMBLY SUPPORT FOR REGISTRATION TUBE				JDTI/OHE		
				ADE/OHE		
DATE	MOD.	NATURE OF MOD.	INITIALS	R. D. S. O.		
				DATE	NAME	T/IDRG/OHE/MCA/000X20/23/0
				DR		
				TC		
				CK		
						SCALE :- NTS



NOTES :

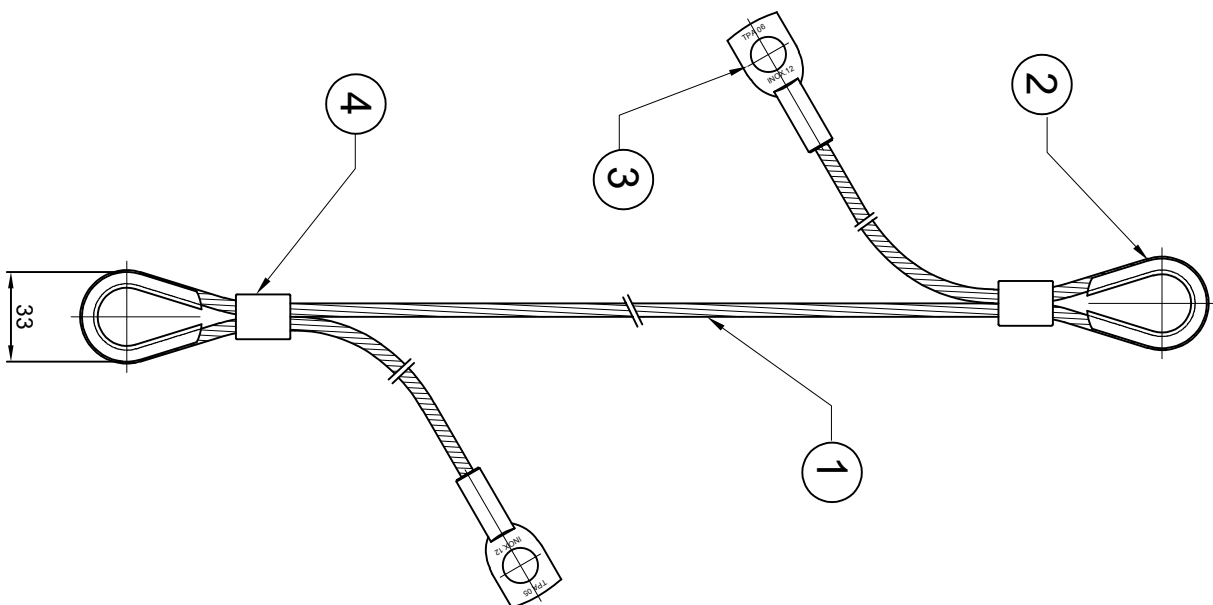
1. ALL DIMENSIONS ARE IN MM.
2. FITTING CONFIRM TO SPECIFICATION NO: TI/SPC/OHE/FITTINGS/0130/(01/13) REV.1 OR LATEST.
3. FASTENERS CONFIRM TO SPECIFICATION NO. TI/SPC/OHE/FASTENERS/0120 REV.01 OR LATEST.
4. ALL STANDARDS SHALL BE TAKEN LATEST. AND INDIAN & INTERNATIONAL STANDARDS ARE APPLICABLE WHEREVER REQUIRED.
5. MARKING DETAILS : MANUFACTURER INITIAL MONOGRAM, PART NO, MONTH & YEAR OF MANUFACTURE TO BE PROVIDED.
6. TECHNICAL DETAILS OF REF. NO:1

"THIS DRAWING IS THE PROPERTY OF RESEARCH DESIGNS AND STANDARDS ORGANISATION (MINISTRY OF RAILWAYS), LUCKNOW-226011, INDIA AND SHALL NOT BE USED, COPIED OR REPRODUCED IN PART OR WHOLE, WITHOUT PRIOR CONSENT IN WRITING."

HOOK CLIP ASSEMBLY

R.D.S.O.

R. D. S. O.			
DATE	MOD.	NATURE OF MOD	INITIALS
			DATE NAME
		DR	T/DRG/OHE/MCA/000X21/23/0
		TC	
		CK	
			REV. 0.0



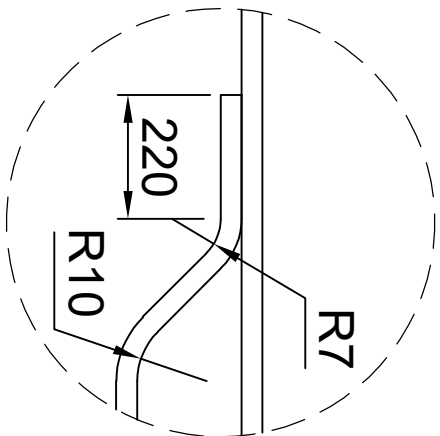
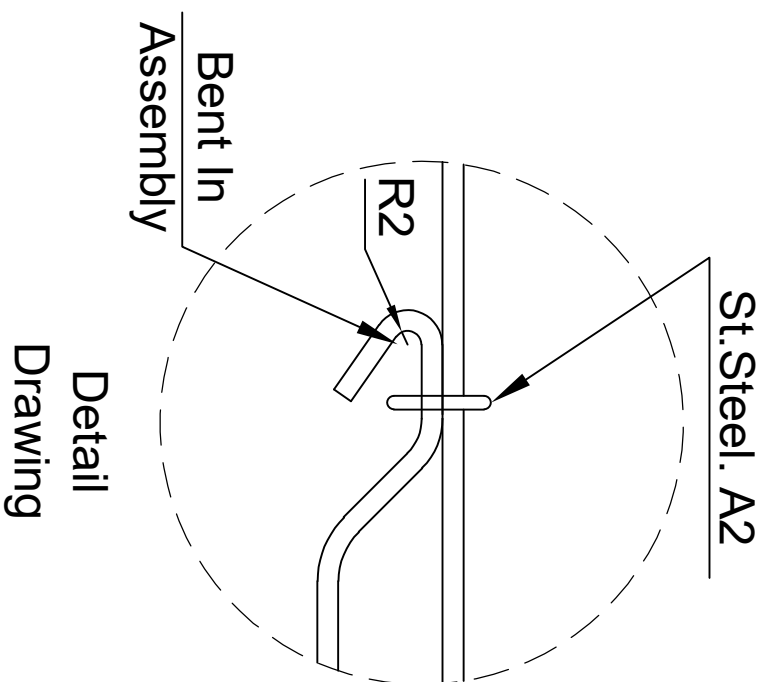
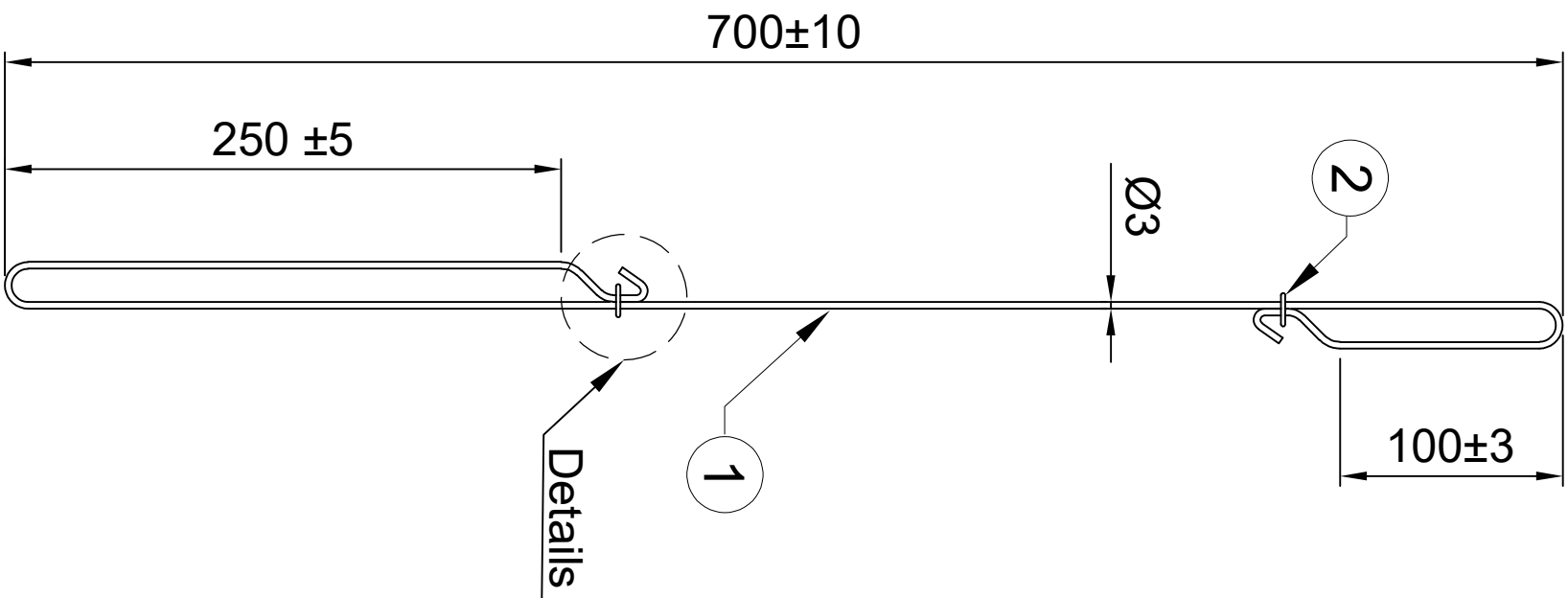
REF.	DESCRIPTION	PART No.	MATERIAL	SPEC.	NUMBER OFF
1	CABLE WIRE Ø5 MM	00 000 000 00	ST. STEEL	UNE - EN 10088	1
2	THIMBLE	00 000 000 00	ST. STEEL	AISI 304	2
3	TERMINAL LUG	00 000 000 00	ST. STEEL	AISI 304	2
4	COMPRESSION SLEEVE	00 000 000 00	ST. STEEL	AISI 304	2

NOTES:

1. ALL DIMENSIONS ARE IN MM.
2. FITTING CONFIRM TO SPECIFICATION NO. TI/SPC/OHE/FITTINGS/0130(10/3) REV.1 OR LATEST.
3. FASTENERS CONFIRM TO SPECIFICATION NO. TI/SPC/OHE/FASTENERS/0120 REV.01 OR LATEST
4. ALL STANDARDS SHALL BE TAKEN LATEST. AND INDIAN & INTERNATIONAL STANDARDS ARE APPLICABLE WHEREVER REQUIRED.
5. MARKING DETAILS - MANUFACTURER, INITIAL, MONOGRAM, PART NO., MONTH & YEAR OF MANUFACTURE TO BE PROVIDED.

" THIS DRAWING IS THE PROPERTY OF RESEARCH DESIGNS AND STANDARDS ORGANISATION (MINISTRY OF RAILWAYS), LUCKNOW-226011, INDIA AND SHALL NOT BE USED, COPIED OR REPRODUCED IN PART OR WHOLE, WITHOUT PRIOR CONSENT IN WRITING."

<div>REGISTER ARM DROPPER</div>					JDT1-2		
					ADET1-2		
DATE	MOD.	NATURE OF MOD.	INITIALS	R . D . S . O .			
				DATE	NAME	T1/DRG/OHE/MCA/000X22/23/0	
				DR			
				TC		SCALE :- N.T.S.	
				CK			
							REV. 0.0



Delivery Method

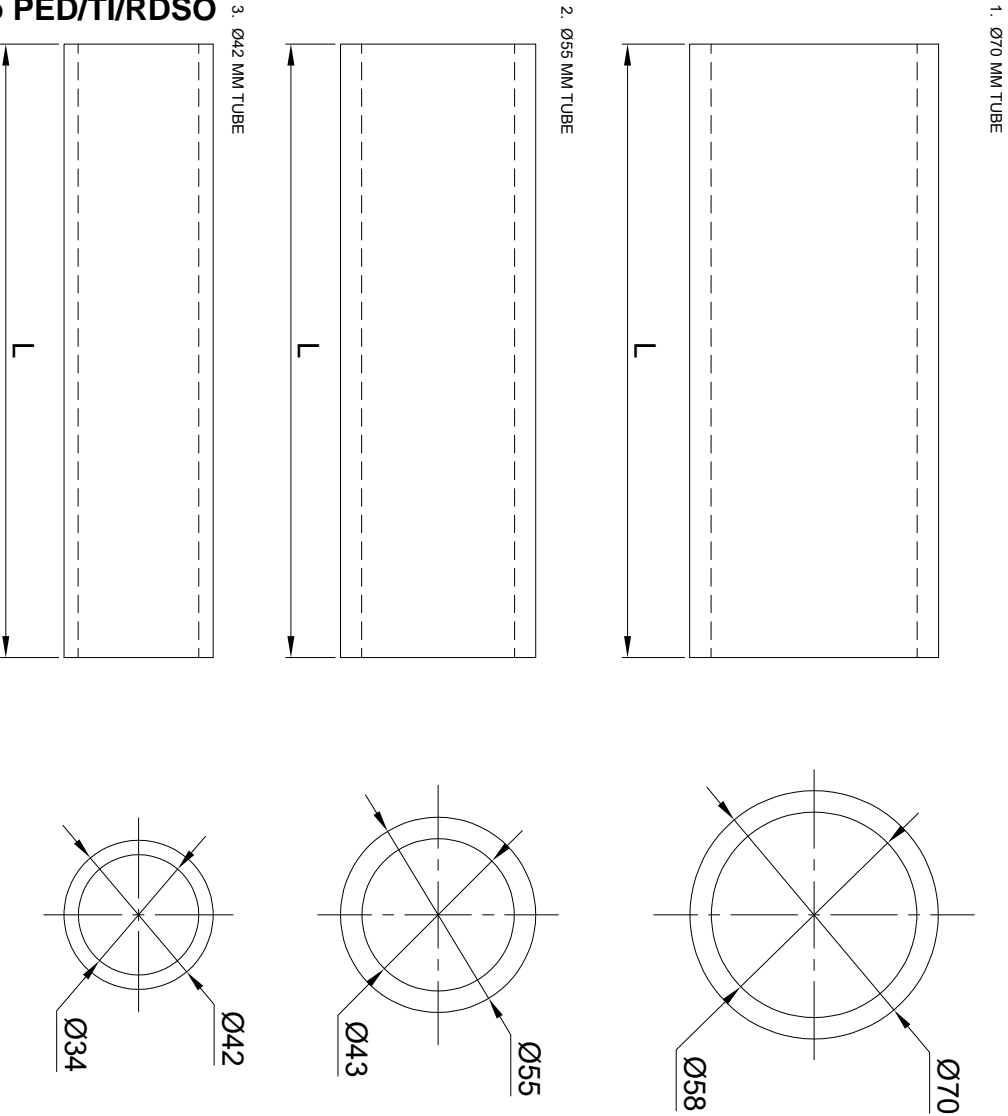
REF.	DESCRIPTION	PART NO.	MATERIAL	SPEC.	NUMBER OFF
1	ANTI WIND STAY WIRE	*****	ST. STEEL	UNE - EN - 10088	1
2	M6 WASHER	*****	ST. STEEL	AISI 304	2

NOTES:

1. ALL DIMENSIONS ARE IN MM.
2. BEFORE BENDING INSERT THE TWO WASHERS INTO THE ROD.
3. FITTING CONFIRM TO SPECIFICATION NO. T/SPC/OHE/FITTINGS/0130(10/13) REV.1 OR LATEST.
4. FASTENERS CONFIRM TO SPECIFICATION NO. T/SPC/OHE/FASTENERS/0120 REV.01 OR LATEST.
5. ALL STANDARDS SHALL BE TAKEN LATEST. AND INDIAN & INTERNATIONAL STANDARDS ARE APPLICABLE WHEREVER REQUIRED.

" THIS DRAWING IS THE PROPERTY OF RESEARCH DESIGNS AND STANDARDS ORGANISATION (MINISTRY OF RAILWAYS), LUCKNOW-226011, INDIA AND SHALL NOT BE USED, COPIED OR REPRODUCED IN PART OR WHOLE, WITHOUT PRIOR CONSENT IN WRITING."

ANTI WIND STAY WIRE				JDTI/OHE		
				ADE/OHE		
DATE	MOD.	NATURE OF MOD.	INITIALS	R. D. S. O.		
				DATE	NAME	T/DRG/OHE/MCA/000X23/23/0
				DR		
				TC		SCALE :- 1:1
				CK		
						REV. 0.0

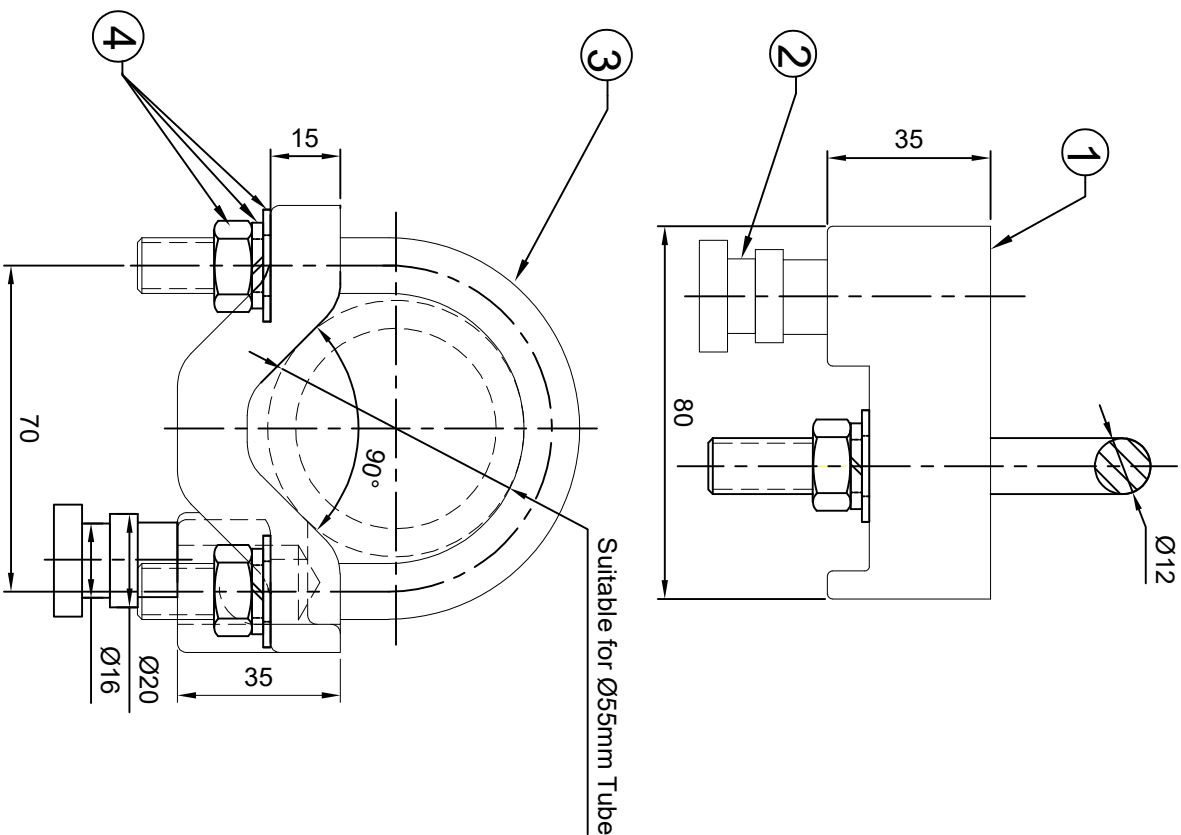


REF.	DESCRIPTION	PART NO.	MATERIAL	SPEC.	NUMBER OFF
1	Ø70 MM TUBE	-----	Al Alloy	AW 6082 EN - 573 - 3	1
2	Ø55 MM TUBE	-----	Al Alloy	AW 6082 EN - 573 - 3	1
3	Ø42 MM TUBE	-----	Al Alloy	AW 6082 EN - 573 - 3	1

- NOTES:
1. ALL DIMENSIONS ARE IN MM.
 2. TOLERANCES ARE AS PER TI/SPC/OHE/FITTINGS/0130(10/13) REV.1
 3. FITTING CONFIRM TO SPECIFICATION NO: TI/SPC/OHE/FITTINGS/0130(10/13) REV.1 OR LATEST.
 4. FASTENERS CONFIRM TO SPECIFICATION NO. TI/SPC/OHE/FASTENERS/0120 REV.01 OR LATEST.
 5. ALL STANDARDS SHALL BE TAKEN LATEST . AND INDIAN & INTERNATIONAL STANDARDS ARE APPLICABLE WHEREVER REQUIRED.
 6. LENGTH OF THE TUBE MAY VARY AS PER ACTUAL TYPE OF CANTILEVER AND SITE LOCATION/IMPLANTATION.

" THIS DRAWING IS THE PROPERTY OF RESEARCH DESIGNS AND STANDARDS ORGANISATION (MINISTRY OF RAILWAYS), LUCKNOW-226011, INDIA AND SHALL NOT BE USED, COPIED OR REPRODUCED IN PART OR WHOLE, WITHOUT PRIOR CONSENT IN WRITING."

MCA TUBES				JDTI/OHE		R. D. S. O.		
				ADE/OHE				
DATE	MOD	NATURE OF MOD.	INITIALS	DATE	NAME	TI/DRG/OHE/MCA/000X25/23/0		REV.
				DR				0.0
				TC		SCALE :- NTS		
				CK				



REF.	DESCRIPTION	PART No.	MATERIAL	SPEC.	NUMBER OFF
1	CONTACT WIRE CLIP SUPPORT	00000000000000000000	AL. ALLOY	AL57Mg0.6, UNE-EN1706/T6	1
2	PH - AD INSERT	00000000000000000000	ST. STEEL	ALSI 304	1
3	"U" BOLT M12 x 70 x 95 MM	00000000000000000000	ST. STEEL	ALSI 304	1
4	M12 NUT, PLAIN & SPRING WASHER	00000000000000000000	ST. STEEL	ALSI 304	2

NOTES:

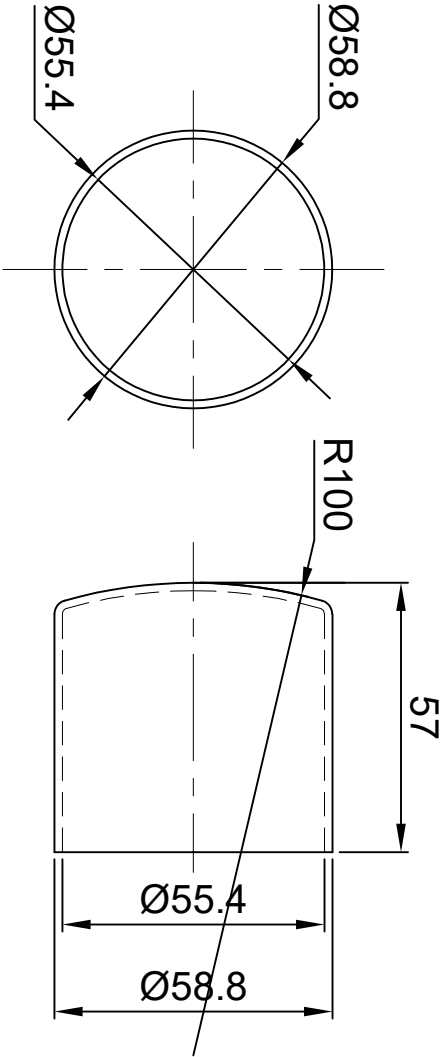
1. ALL DIMENSIONS ARE IN MM.
2. TOLERANCES ARE +0.5MM FOR DIMENSIONS LESS THAN 35MM AND 1.5% FOR DIMENSIONS MORE THAN 35MM.
3. FITTING CONFIRM TO SPECIFICATION NO. TI/SPC/OHE/FITTINGS/0130/10/13 REV. 1 OR LATEST
4. FASTENERS CONFIRM TO SPECIFICATION NO. TI/SPC/OHE/FASTENERS/0120 REV/01 OR LATEST.
5. ALL STANDARDS SHALL BE TAKEN LATEST. AND INDIAN & INTERNATIONAL STANDARDS ARE APPLICABLE WHEREVER REQUIRED.
6. MARKING DETAILS: MANUFACTURED INITIAL MONOGRAM, PART NO. MONTH & YEAR OF MANUFACTURE TO BE PROVIDED.

" THIS DRAWING IS THE PROPERTY OF RESEARCH DESIGNS AND STANDARDS ORGANISATION (MINISTRY OF RAILWAYS), LUCKNOW-226011, INDIA AND SHALL NOT BE USED, COPIED OR REPRODUCED IN PART OR WHOLE, WITHOUT PRIOR CONSENT IN WRITING."

STAGGER SUPPORT ASSEMBLY (OOR)

JDTI/OHE	
ADE/OHE	

R. D. S. O.									
DATE	MOD.	NATURE OF MOD.	INITIALS	DATE		NAME		REV.	
						T/I/DRG/O/H/E/M/CA/000X26/23/0		0.0	
						SCALE :- NTS			



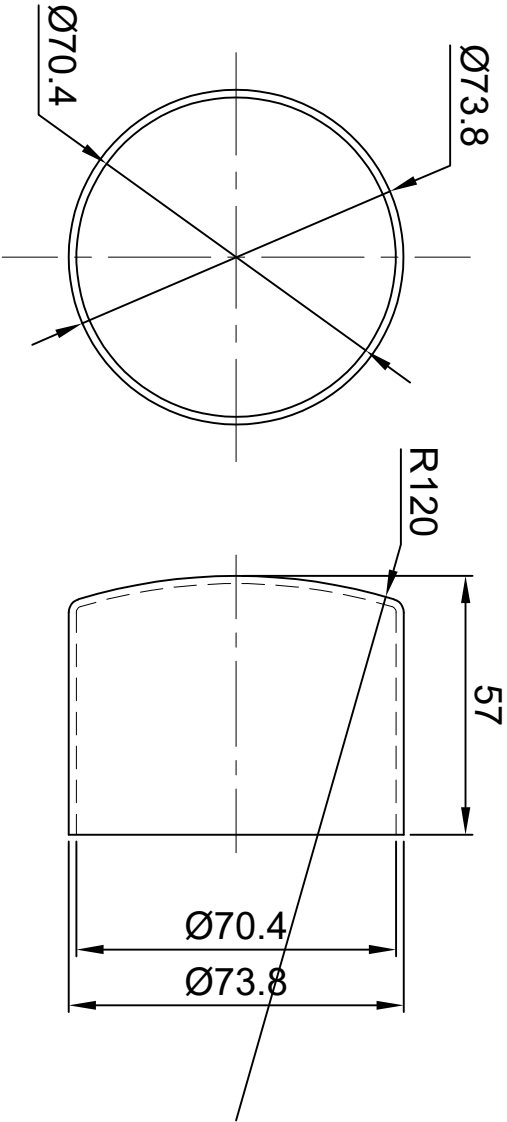
REF.	DESCRIPTION	PART No.	MATERIAL	SPEC.	NUMBER OFF
1	TUBE CAP FOR 55 MM TUBE		Al Alloy	AW 6082 EN - 573 - 3 / 1050	1

NOTES:

1. ALL DIMENSIONS ARE IN MM.
2. TOLERANCES ARE AS PER T/SPC/OHE/FITTINGS/0130/10/13 REV.1
3. FITTING CONFIRM TO SPECIFICATION NO. T/SPC/OHE/FITTINGS/0130/10/13) REV.1 OR LATEST.
4. FASTENERS CONFIRM TO SPECIFICATION NO. T/SPC/OHE/FASTENERS/0120 REV.01 OR LATEST
5. ALL STANDARDS SHALL BE TAKEN LATEST. AND INDIAN & INTERNATIONAL STANDARDS ARE APPLICABLE WHEREVER REQUIRED.

" THIS DRAWING IS THE PROPERTY OF RESEARCH DESIGNS AND STANDARDS ORGANISATION (MINISTRY OF RAILWAYS), LUCKNOW-226011, INDIA AND SHALL NOT BE USED, COPIED OR REPRODUCED IN PART OR WHOLE, WITHOUT PRIOR CONSENT IN WRITING."

TUBE CAP FOR 55 MM TUBE		JDT/OHE	R . D . S . O .			
		ADE/OHE				
DATE	MOD.	NATURE OF MOD.	INITIALS	DATE	NAME	REV.
				DR		0.0
				TC		
			CK		SCALE :- NTS	



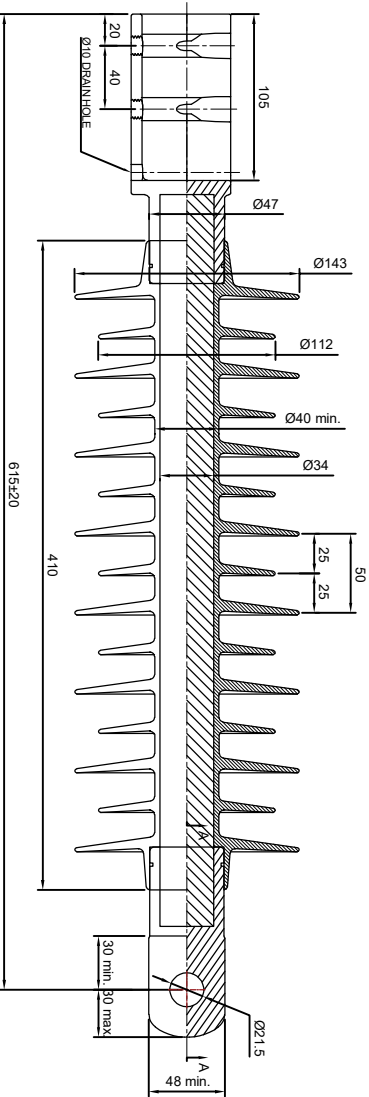
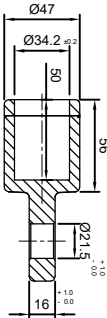
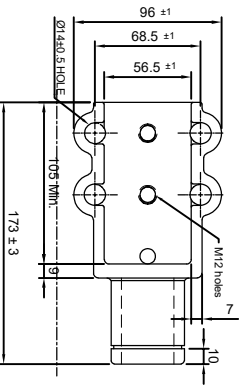
REF.	DESCRIPTION	PART No.	MATERIAL	SPEC.	NUMBER OFF
1	TUBE CAP FOR 55 MM TUBE	-----	Al Alloy	AW 6082 EN - 573 - 3 / 1050	1

NOTES:

1. ALL DIMENSIONS ARE IN MM.
2. TOLERANCES ARE AS PER TI/SPC/OHE/FITTINGS/0130(10/13) REV.1
3. FITTING CONFIRM TO SPECIFICATION NO. TI/SPC/OHE/FITTINGS/0130(10/13) REV.1 OR LATEST.
4. FASTENERS CONFIRM TO SPECIFICATION NO. TI/SPC/OHE/FASTENERS/0120 REV.01 OR LATEST.
5. ALL STANDARDS SHALL BE TAKEN LATEST, AND INDIAN & INTERNATIONAL STANDARDS ARE APPLICABLE WHEREVER REQUIRED.

" THIS DRAWING IS THE PROPERTY OF RESEARCH DESIGNS AND STANDARDS ORGANISATION (MINISTRY OF RAILWAYS), LUCKNOW-226011, INDIA AND SHALL NOT BE USED, COPIED OR REPRODUCED IN PART OR WHOLE, WITHOUT PRIOR CONSENT IN WRITING."

TUBE CAP FOR 70 MM TUBE				JDT/OHE			
				ADE/OHE			
				R . D . S . O .			
DATE	MOD.	NATURE OF MOD.	INITIALS	DATE	NAME	TI/DRG/OHE/MCA/000X28/23/0	
				DR			
				TC		SCALE :- NTS	
			CK				
						REV.	0.0



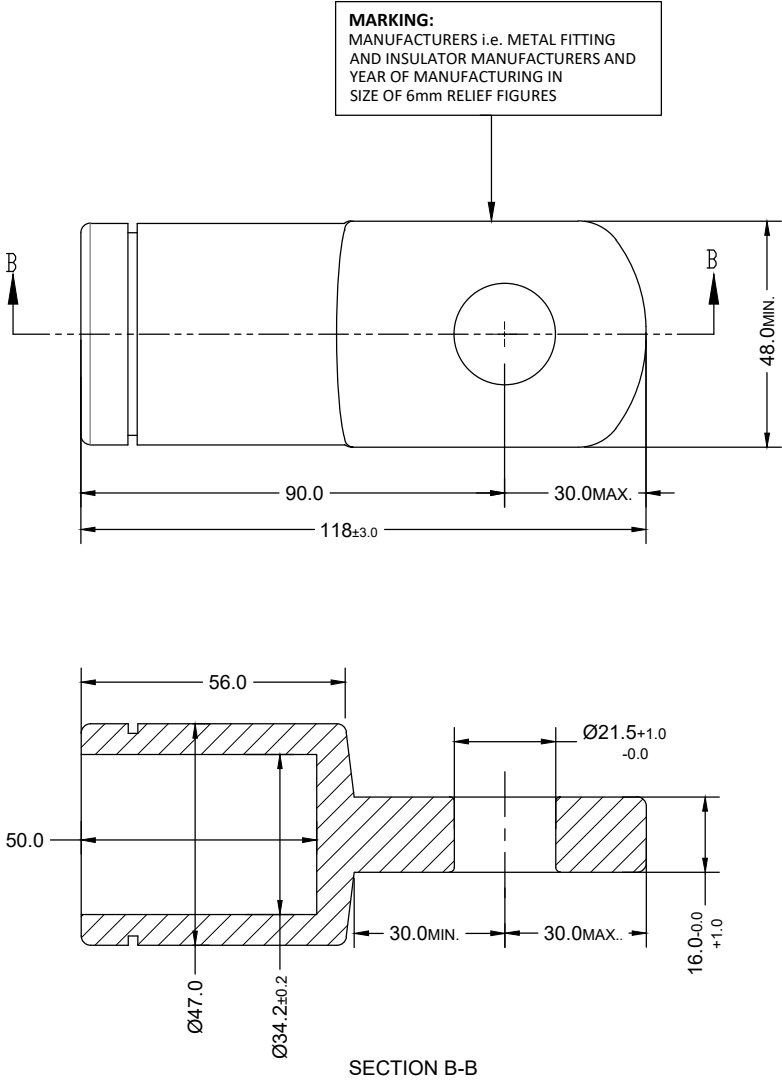
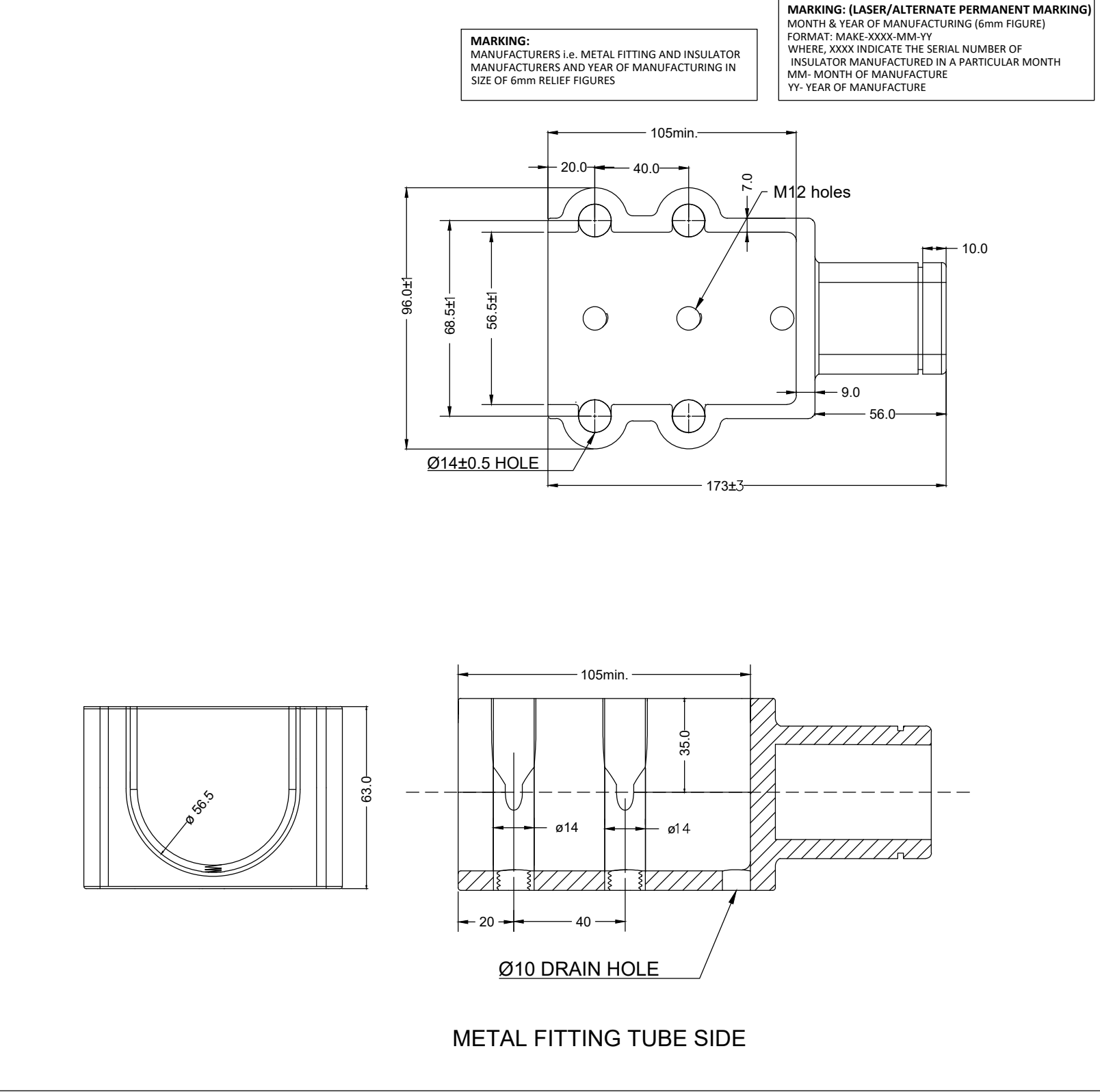
MECHANICAL CHARACTERISTICS :			DIMENSIONS :		
1. MINIMUM TENSION STRENGTH	---	7000kgf	1. CREEPAGE DISTANCE (minimum)	---	1600 mm
2. MINIMUM FAILING BENDING MOMENT	---	200kgf.m	2. ARCHING DISTANCE (minimum)	---	430 mm
ELECTRICAL CHARACTERISTICS :			3. NO. OF SHEDS	---	15 Nos. (8 Big 7 Small)
1. METAL SYSTEM VOLTAGE	---	25kV	Where		
2. SYSTEM FREQUENCY	---	50HZ	L : The total creepage distance of the insulator		
3. 1 MINUTE POWER FREQUENCY WITHSTAND VOLTAGE	---	125kV(rms)	A : The arcing distance of the insulator		
4. LIGHTNING IMPULSE WITHSTAND VOLTAGE	---	240kV/peak			
5. HURDLE DISCHARGE TEST VOLTAGE	---	35kV(rms)			
APPLICABLE STANDARDS					
1. INSULATOR	---	IEC- 61109-2:2008			
2. ORGANISATION	---	IS- 2833-1:986			

REF.	DESCRIPTION	PART No.	MATERIAL	SPEC.	NUMBER OFF
1	METAL FITTING (MAST SIDE)	----	SGCI (HDG)	----	1
2	METAL FITTING (TUBE SIDE)	----	SGCI (HDG)	----	1
3	POLYMER HOUSING	----	SILICONE RUBBER	----	--
4	CORE ROD	----	FRP ROD	----	1

- NOTES :
1. ALL DIMENSIONS ARE IN mm.
 2. THE METAL FITTING OF MAST SIDE SHALL BE AT RIGHT ANGLE TO THE METAL FITTING OF TUBE SIDE.
 3. TOLERANCES ON UNTOLERANCED DIMENTIONS FOR METAL FITTINGS AS PER SPECIFICATION NO T/SPC/OHE/INSCOM/1072, REV.01/IS 8349 CLASS - 1.
 4. CRIMPING JAW LENGTH - 40 mm MIN.
 5. CRIMPING PRESSURE - 110 KG/M2 (MIN.)
 6. MASS OF ZINC COATING - 1000 gm/2 (MIN.)
 7. WEIGHT OF INSULATOR - 4.9 KG (APPROX)

* THIS DRAWING IS THE PROPERTY OF RESEARCH DESIGNS AND STANDARDS ORGANISATION (MINISTRY OF RAILWAYS), LUCKNOW-226011, INDIA AND SHALL NOT BE USED, COPIED OR REPRODUCED IN PART OR WHOLE, WITHOUT PRIOR CONSENT IN WRITING."

STAY INSULATOR				R. D. S. O.			
				JDTI-2			
				ADETI-2			
DATE	MOD.	NATURE OF MOD.	INITIALS	DATE	NAME	T/DRG/OHE/MCA/00029-1/23/10	REV.
					DR		0.0
					TC		
					CK		



METAL FITTING MAST SIDE

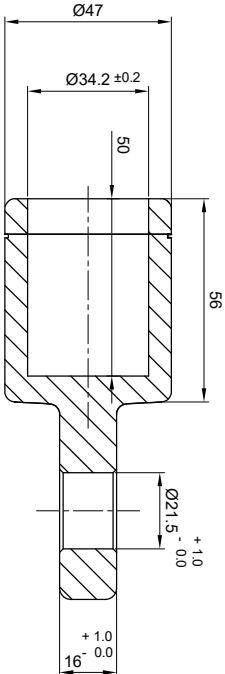
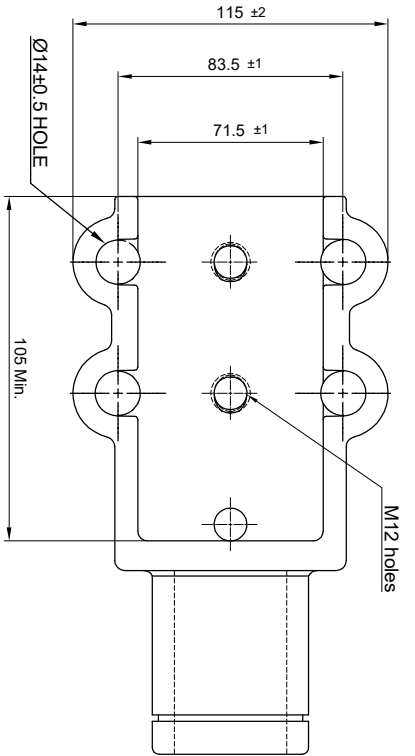
ITEM	DESCRIPTION	MATERIAL	QTY	REMARKS
1	METAL FITTING (MAST SIDE)	SGCI	1	HDG
2	METAL FITTING (TUBE SIDE)	SGCI	1	HDG

NOTES :				
1. MATERIAL --- SGCI(HDG)				
2. GALVANISATION CONFORMS TO --- RDSO SPEC. NO. ETI/OHE/13(4/84), IS:2633 & TI/SPC/OHE/INSCOM/1072, Rev-00 THE MINIMUM WEIGHT OF ZINC COATING SHALL BE 1000g/m ² (MIN.) FOR ALL TYPE OF METAL FITTING.				
3. DIMENSION TOLERANCE : --- AS PER IEC 61109/ TI/SPC/OHE/INSCOM/1072, Rev-00				
4. TOLERANCES OF UNTOLERANCED DIMENSIONS FOR METAL FITTING AS PER CLASS-I OF IS:8349				
5. METAL FITTING CONFORMS TO RDSO SPEC. NO. TI/SPC/OHE/INSCOM/1072, REV-00				
6. ALL THE DIMENSIONS & TOLERANCES ARE APPLICABLE AFTER HOT DIP GALVANISATION				

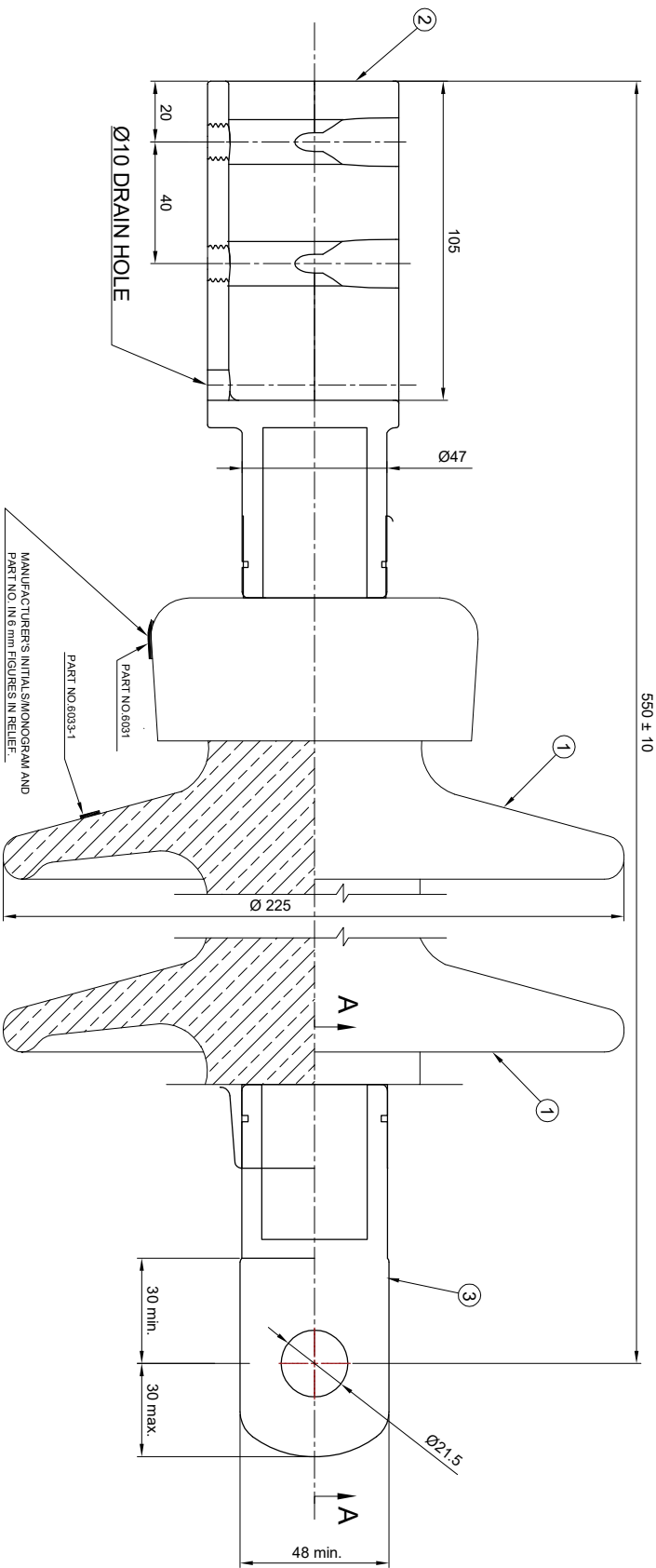
MECHANICAL CHARACTERISTICS :	
1. TENSION LOAD	--- 7000kgf
2. BENDING MOMENT LOAD	--- 200kgf.m

ALL DIMENSIONS ARE IN "mm"

	NAME	SIGNATURE	DATE	R.D.S.O.	
Drawn by					
Checked by					
App'd by					
Q.A				TITLE	STAY ARM 55MM TUBE
PROJECTION: -				A3	SHEET 1 OF 1



Section A - A



REF.	DESCRIPTION	PART NO.	MATERIAL	SPECIFICATION	APPROX. WT. (kg)	NUMBER OFF
1	BRACKET INSULATOR SHELL	6033-1	PORCELAIN BROWN/GLAZED	ETI/OHE/15		1
2	METAL FITTING (TUBE SIDE)		SGCI (H/Dg)	Ø 3/8" X 1/2" (H/Dg)		1
3	METAL FITTING (MAST SIDE)		SGCI (H/Dg)	Ø 3/8" X 1/2" (H/Dg)		1
4	CORE ROD		FRP ROD	Ø 3/8" X 1/2" (H/Dg)		1

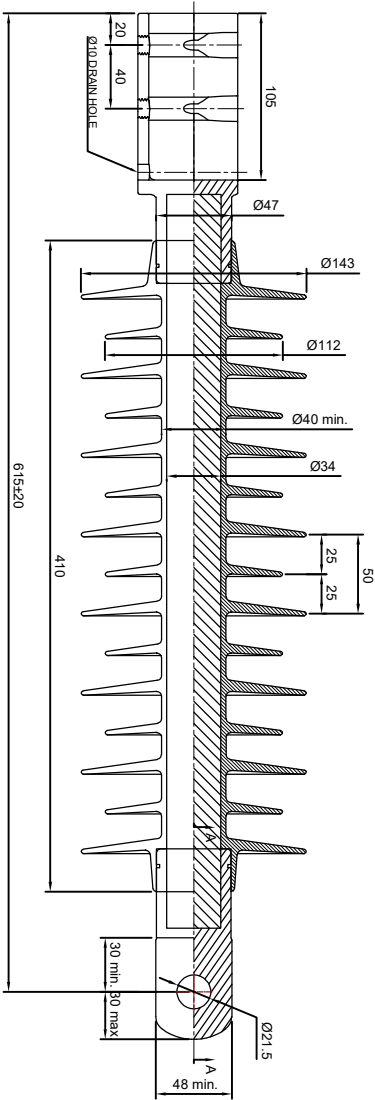
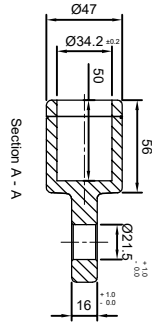
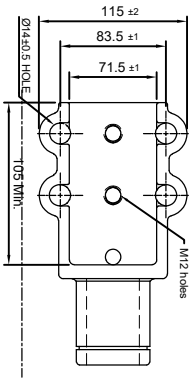
NOTES:-

1. THIS DRAWING IS FOR GUIDANCE ONLY.
2. THE INSULATOR SHALL CONFORM TO SPECIFICATION NO ETI06/E15.
3. ALL DIMENSIONS AREA IN MILLIMETRES.
4. THE ENDS OF THE PORCELAIN SHALL BE CONICAL GLAZED OR STRAIGHT IF SANDED.
5. THE MANUFACTURER'S MONOGRAM NAME OF COUNTRY, PART NUMBER, MONTH AND YEAR OF MANUFACTURE TO BE INDICATED IN 10 mm LITTERS/FIGURES ON PORCELAIN SHELL.

" THIS DRAWING IS THE PROPERTY OF RESEARCH DESIGNS AND STANDARDS ORGANISATION (MINISTRY OF RAILWAYS), LUCKNOW-226011, INDIA AND SHALL NOT BE USED, COPIED OR REPRODUCED IN PART OR WHOLE, WITHOUT PRIOR CONSENT IN WRITING."

<p>PORCELAIN BRACKET INSULATOR</p> <p>(CREEPAGE PATH 1050mm MIN.)</p>	
JD TI-2	
AD ETI-2	

REF.				CROSS REF.			
DATE	MOD.	NATURE OF MOD.	INITIALS	R. D. S. O.			
				DATE	NAME	T/IDRG/OHE/MCA/000X30/23/0	REV.
			DR				0
			TC				
						SCALE :- N.T.S.	
			CK				



MECHANICAL CHARACTERISTICS :			DIMENSIONS :		
1. MINIMUM TENSION STRENGTH ---	7000kgf		1. CREEPAGE DISTANCE (minimum) ---	1600 mm	
2. MINIMUM FAILING BENDING MOMENT ---	200kgf/m		2. ARcing DISTANCE (minimum) ---	430 mm	
ELECTRICAL CHARACTERISTICS :			3. NO. OF SHEDS ---	15 Nos. (8 Btg 7 small)	
1. NORMAL SYSTEM VOLTAGE ---	25kV				
2. SYSTEM FREQUENCY ---	50HZ				
3. W. MINUTE POWER FREQUENCY WITHSTAND VOLTAGE ---	125kV (rms)				
4. D. LIGHTNING IMPULSE WITHSTAND VOLTAGE ---	240kV (peak)				
5. V. DIE DISCHARGE TEST VOLTAGE ---	35kV (rms)				
APPLICABLE STANDARDS					
1. INSULATOR ---	IEC: 61109-2:2008				
2. GRADINATION ---	IS: 2833-1986				

Where
L : The total creepage distance of the insulator
A : The arcing distance of the insulator

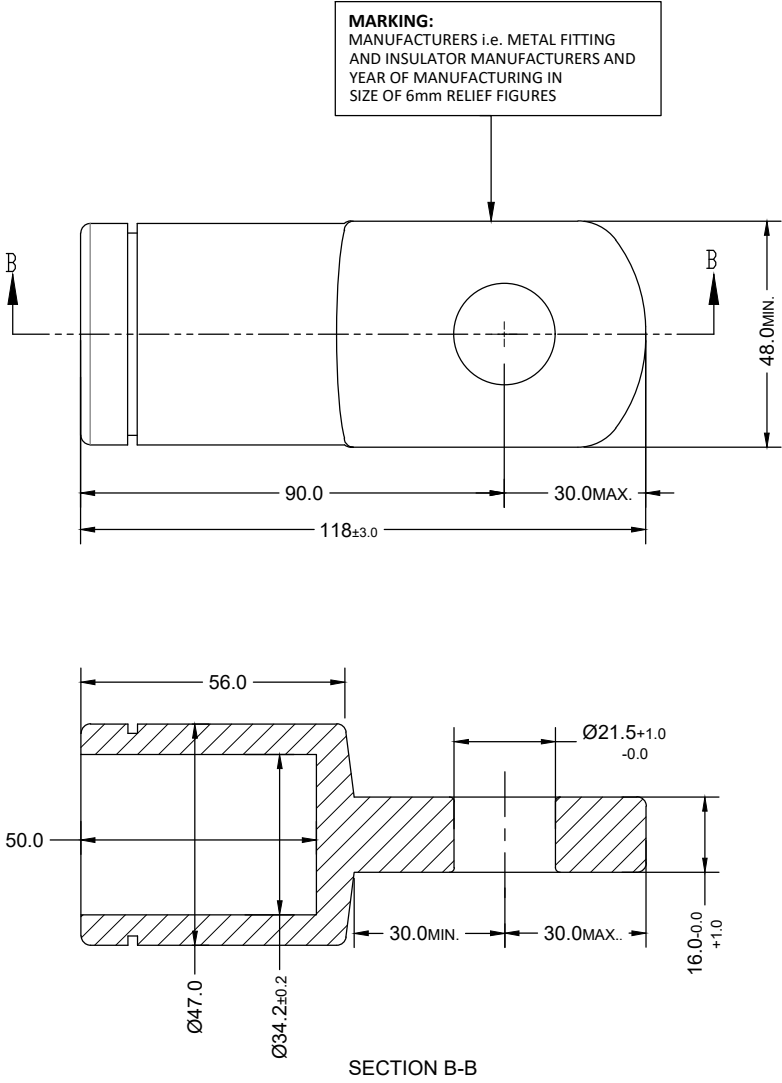
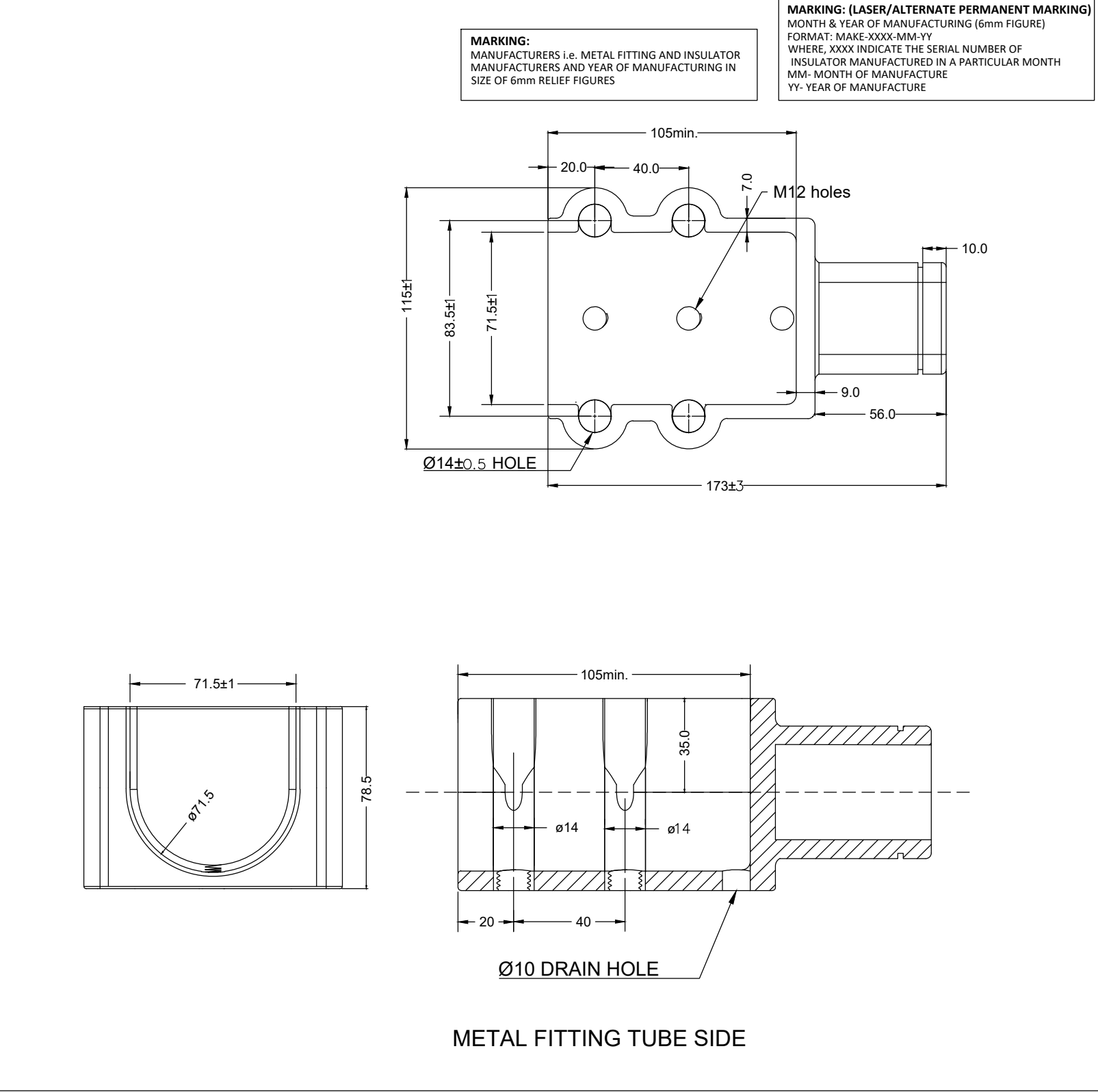
Sl. No	Properties	Formulas	Value
1	Minimum distance between shed	S	50
2	Spacing versus shed overhang	S/P	50/51.3 = 0.974
3	Creepage Factor	L/A	1617/458 = 3.530
4	Creepage distance versus clearance	ld1/C1	106.7/326.9 = 3.96
5	Profile factor	ld2/C2	103.9/27.1 = 3.83
6	Actual creepage distance on drawing	---	1617 mm
7	Actual arcing distance on drawing	---	458 mm
8	Alternating sheds and shed overhang	P1 - P2	51.3 - 35.8 = 15.5

REF.	DESCRIPTION	PART No.	MATERIAL	SPEC.	NUMBER OFF
1	METAL FITTING (MAST SIDE)	---	SGCI (HDG)	---	1
2	METAL FITTING (TUBE SIDE)	---	SGCI (HDG)	---	1
3	POLYMER HOUSING	---	SILICONE RUBBER	---	---
4	CORE ROD	---	FRP ROD	---	1

- NOTES:
1. ALL DIMENSIONS ARE IN mm.
 2. THE METAL FITTING OF MAST SIDE SHALL BE AT RIGHT ANGLE TO THE METAL FITTING OF TUBE SIDE.
 3. TOLERANCES ON UNTOLERANCED DIMENTIONS FOR METAL FITTINGS AS PER SPECIFICATION NO T/SPC/OHE/INSCOM/1072, REV. 01/15 8349 CLASS - 1.
 4. CRIMPING JAW LENGTH :- 40 mm MIN.
 5. CRIMPING PRESSURE :- 110 KG/M2 (MIN.)
 6. MASS OF ZINC COATING :- 1000 g/m2 (MIN.)
 7. WEIGHT OF INSULATOR :- 5.7 KG (APPROX.)

* THIS DRAWING IS THE PROPERTY OF RESEARCH DESIGNS AND STANDARDS ORGANISATION (MINISTRY OF RAILWAYS), LUCKNOW-226011, INDIA AND SHALL NOT BE USED, COPIED OR REPRODUCED IN PART OR WHOLE, WITHOUT PRIOR CONSENT IN WRITING.*

BRACKET INSULATOR				JDTI-2	
				ADETI-2	
DATE	MOD.	NATURE OF MOD.	INITIALS	DATE	NAME
				DR	T/DRG/OHE/MC A/000X30-1/23/0
				TC	
			CK		
				R. D. S. O.	
				REV.	0.0

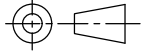


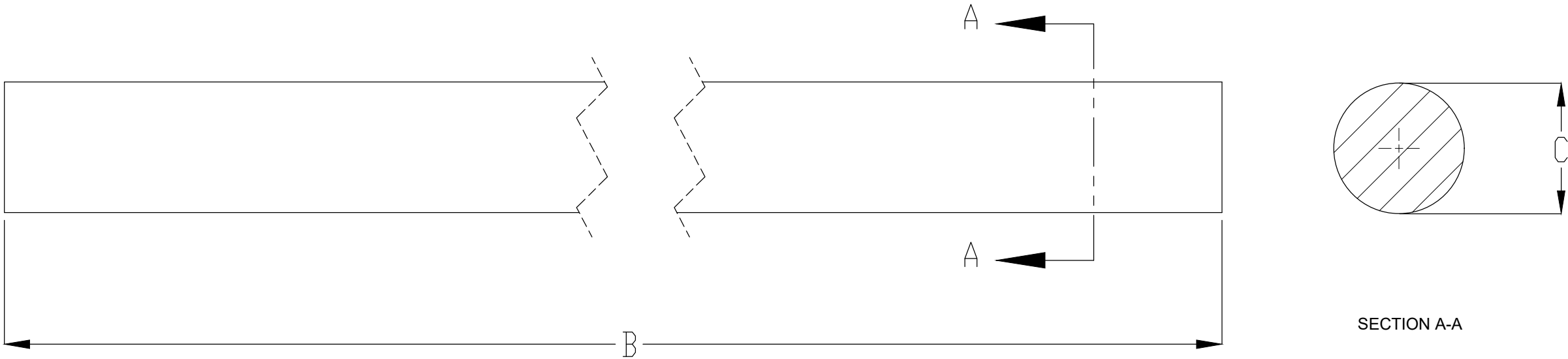
ITEM	DESCRIPTION	MATERIAL	QTY	REMARKS
1	METAL FITTING (MAST SIDE)	SGCI	1	HDG
2	METAL FITTING (TUBE SIDE)	SGCI	1	HDG

NOTES :	
1. MATERIAL	--- SGCI(HDG)
2. GALVANISATION CONFORMS TO	--- RDSO SPEC. NO. ETI/OHE/13(4/84), IS:2633 & TI/SPC/OHE/INSCOM/1072, Rev-00 THE MINIMUM WEIGHT OF ZINC COATING SHALL BE 1000g/m ² (MIN.) FOR ALL TYPE OF METAL FITTING.
3. DIMENSION TOLERANCE :	--- AS PER IEC 61109/ TI/SPC/OHE/INSCOM/1072, Rev-00
4. TOLERANCES OF UNTOLERANCED DIMENSIONS FOR METAL FITTING AS PER	CLASS-I OF IS:8349
5. METAL FITTING CONFORMS TO RDSO SPEC. NO. TI/SPC/OHE/INSCOM/1072, REV-00	
6. ALL THE DIMENSIONS & TOLERANCES ARE APPLICABLE AFTER HOT DIP GALVANISATION	

MECHANICAL CHARACTERISTICS :	
1. TENSION LOAD	--- 7000kgf
2. BENDING MOMENT LOAD	--- 200kgf.m

ALL DIMENSIONS ARE IN "mm"

	NAME	SIGNATURE	DATE	R.D.S.O.	
Drawn by					
Checked by					
App'd by					
Q.A					
				TITLE	BRACKET FITTING 70MM TUBE
PROJECTION: - 				A3	SHEET 1 OF 1



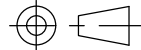
Sr. no.	INSULATOR DESCRIPTION	REF. DRAWING NO.	FRP ROD LENGTH (B)	FRP ROD DIAMETER (C)
1	25KV COMPOSITE BRACKET INSULATOR (1600mm CD)		456±3	34
2	25KV COMPOSITE STAY ARM INSULATOR (1600mm CD)		456±3	34

ITEM	DESCRIPTION	MATERIAL	QTY	REMARKS
1	GLASS ROVING	ECR GLASS BORON FREE	--	
2	RESIN SYSTEM	EPOXY RESIN	--	

NOTES :
1. DIMENSION TOLERANCE --- AS PER IEC 61109/ TI/SPC/OHE/INSCOM/1072, Rev-00
2. FRP ROD CONFORMS TO RDSO SPEC. NO. TI/SPC/OHE/INSCOM/1017, Rev-01

MECHANICAL CHARACTERISTICS :
1. TENSION LOAD --- 7000kgf
2. BENDING MOMENT LOAD --- 200kgf.m

ALL DIMENSIONS ARE IN "MM"

	NAME	SIGNATURE	DATE	R.D.S.O.	
Drawn by					
Checked by					
App'd by					
Q.A					
				TITLE	25KV COMPOSITE INSULATOR FRP ROD (1600mm CD)
PROJECTION: - 				A3	SHEET 1 OF 1