

WEIGHT OF SPAN IN TONNES		
SPAN	BED PLATES	TOTAL
17.44	0.63	18.07

THE TOTAL WEIGHT OF SPAN INCLUDES WEIGHT OF RIVETS HEADS @ 3%

SCHEDULE OF REFERENCES

DESCRIPTION	DRG. NOS.
DETAILS	RDSO/B-607
ERECTION DRAWINGS	RDSO/B-608
PART AND SHIPPING LIST	RDSO/B-609

"THIS DRAWING IS THE PROPERTY OF RESEARCH DESIGN AND STANDARDS ORGANISATION (MINISTRY OF RAILWAYS), LUCKNOW-226011, INDIA AND SHALL NOT BE USED, COPIED OR REPRODUCED IN PART OR WHOLE, WITHOUT PRIOR CONSENT IN WRITING."

▲ THESE STIFFENERS ARE NOTCHED AT TOP TO FIT AGAINST GUSSETS.

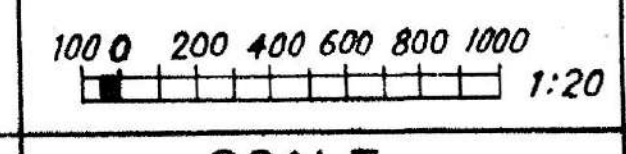
ALL HOLES 21.5 DIA. FOR 20 DIA. RIVETS EXCEPT WHERE OTHERWISE SHOWN.

DESCRIPTION	RIVETS	
	SHOP	FIELD
SNAP HEAD	●	●
C.S.K. ON FAR SIDE	●	●
C.S.K. ON NEAR SIDE	●	●
C.S.K. ON BOTH SIDES	●	●
ANCHOR BOLTS	●	●
TURNT BOLTS	●	●

- ALL DIMENSIONS ARE IN MILLIMETRES.
- THIS DESIGN IS IN ACCORDANCE WITH BRIDGE RULES-1964. AND STEEL BRIDGE CODE-1962.
- DESIGNED FOR R.C. BED BLOCKS WITH 42.2 Kg/cm² PERMISSIBLE PRESSURE OR PLAIN CONCRETE WITH A CUBE STRENGTH OF 210 Kg/cm².

NOTE

I.R.S. B₁-62 & B₂-62



SPECIFICATION

SCALE

ALT.

DESCRIPTION

DATE

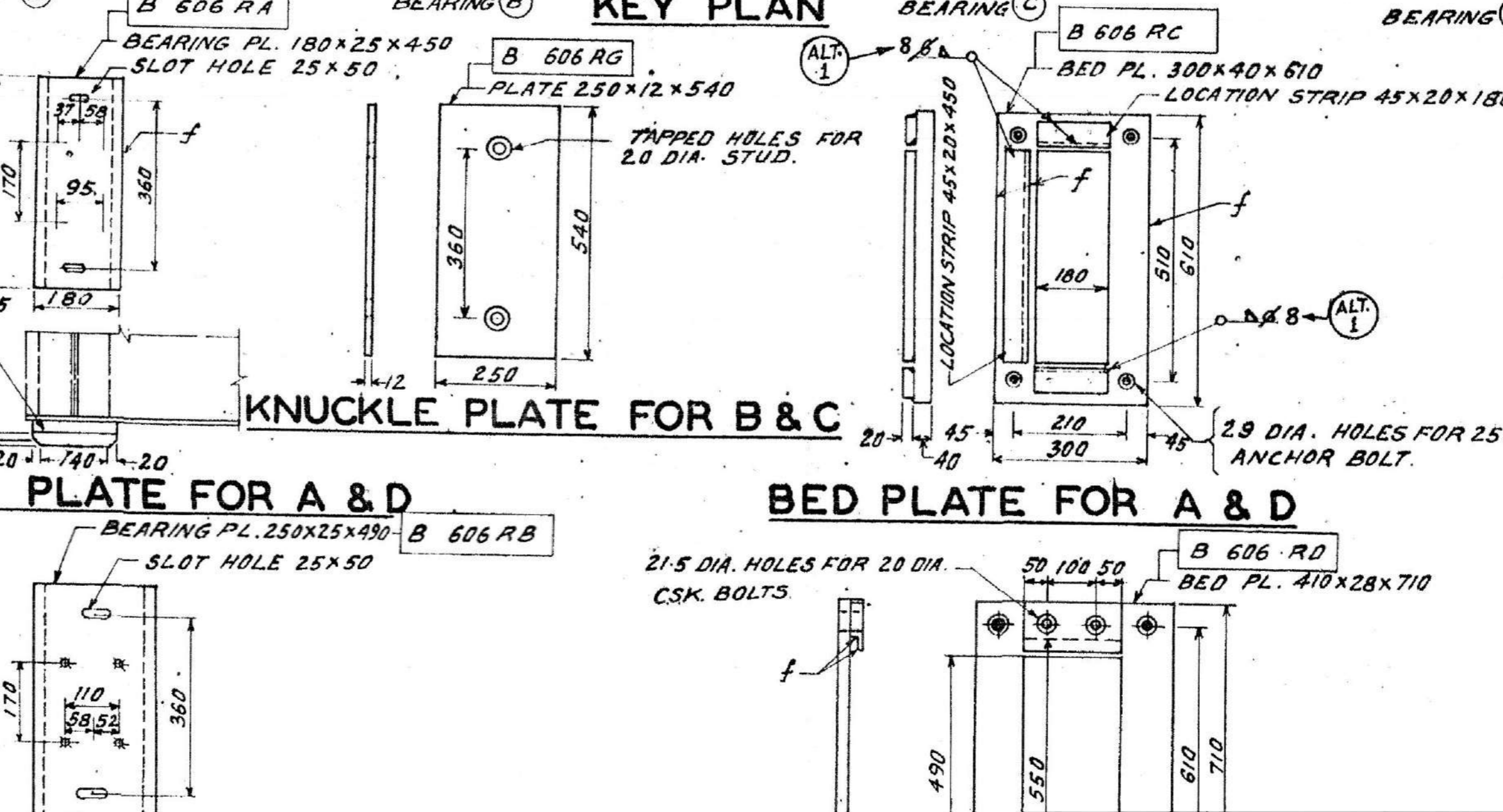
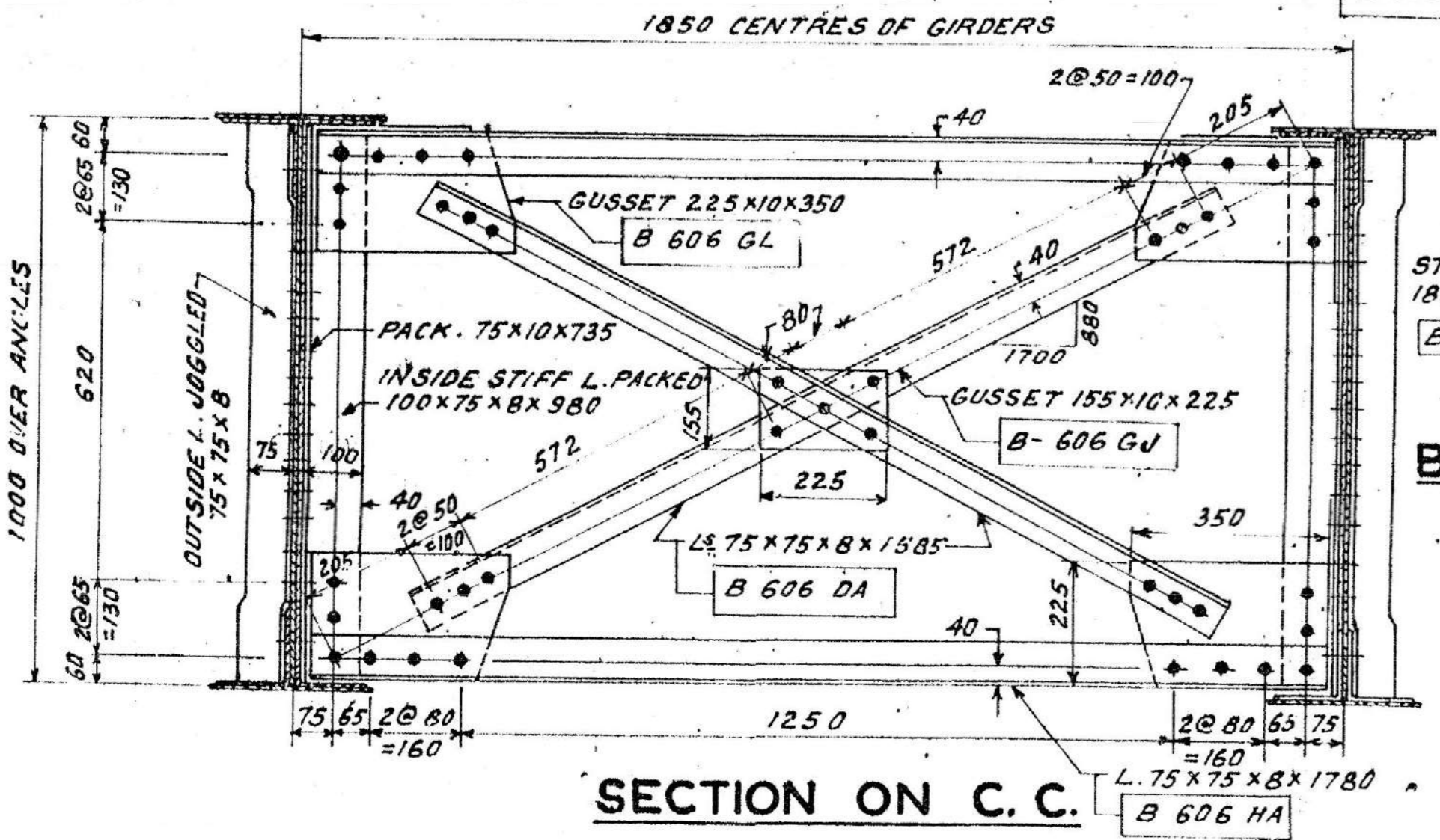
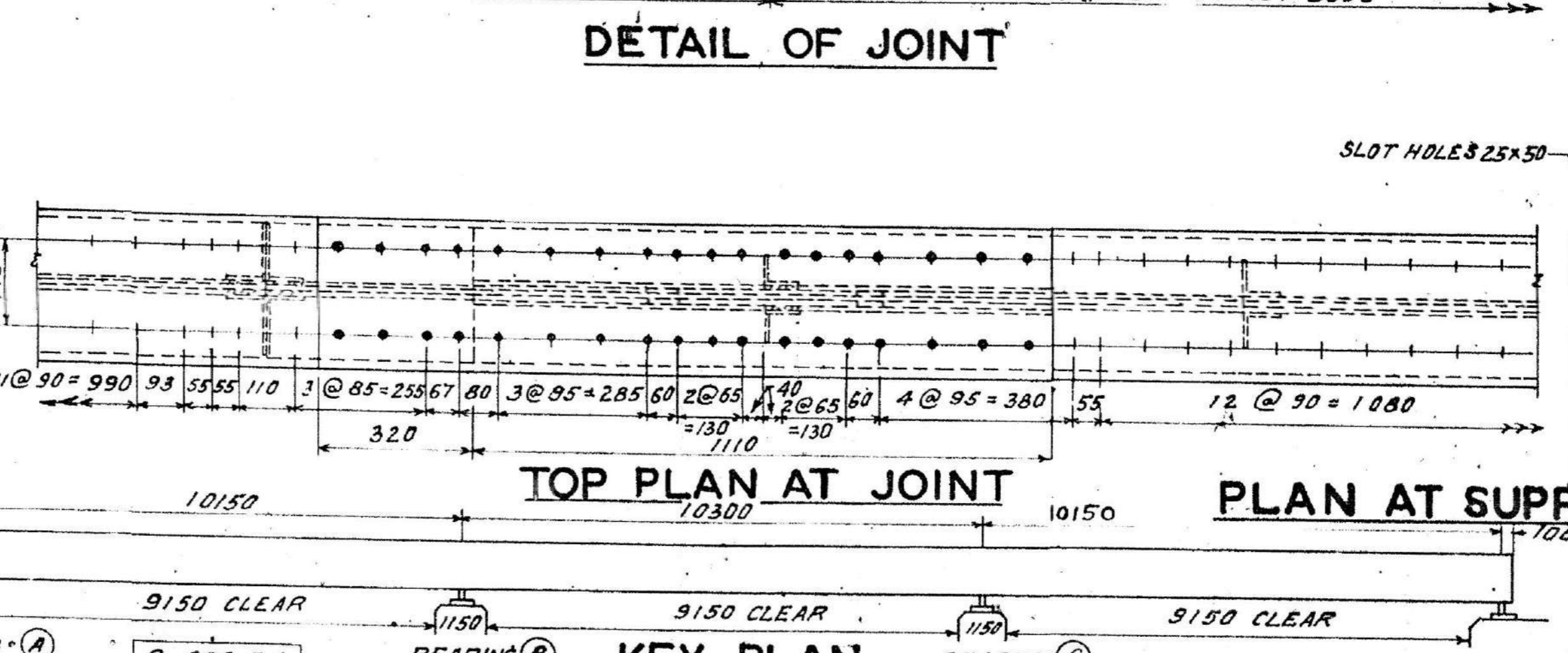
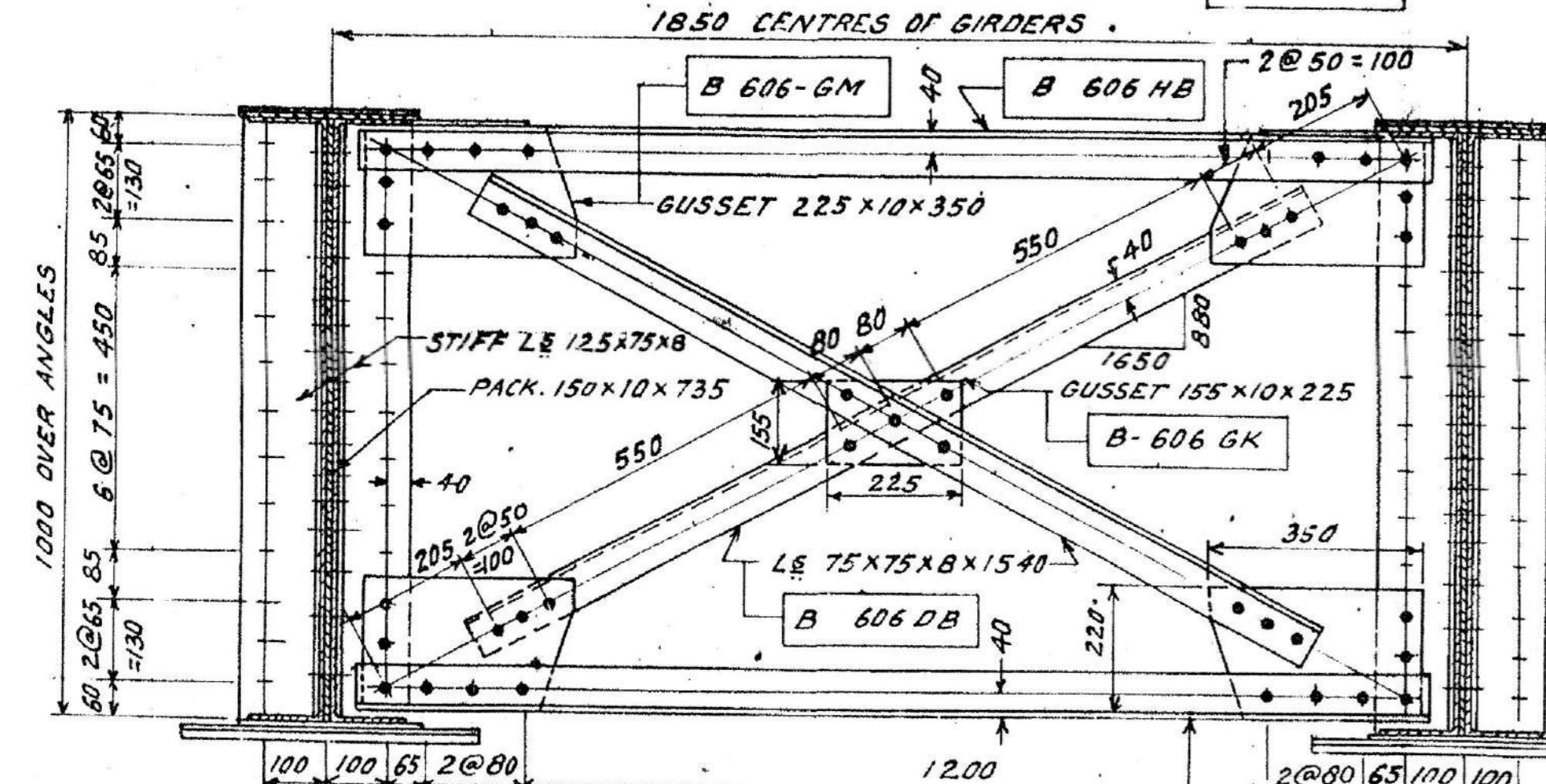
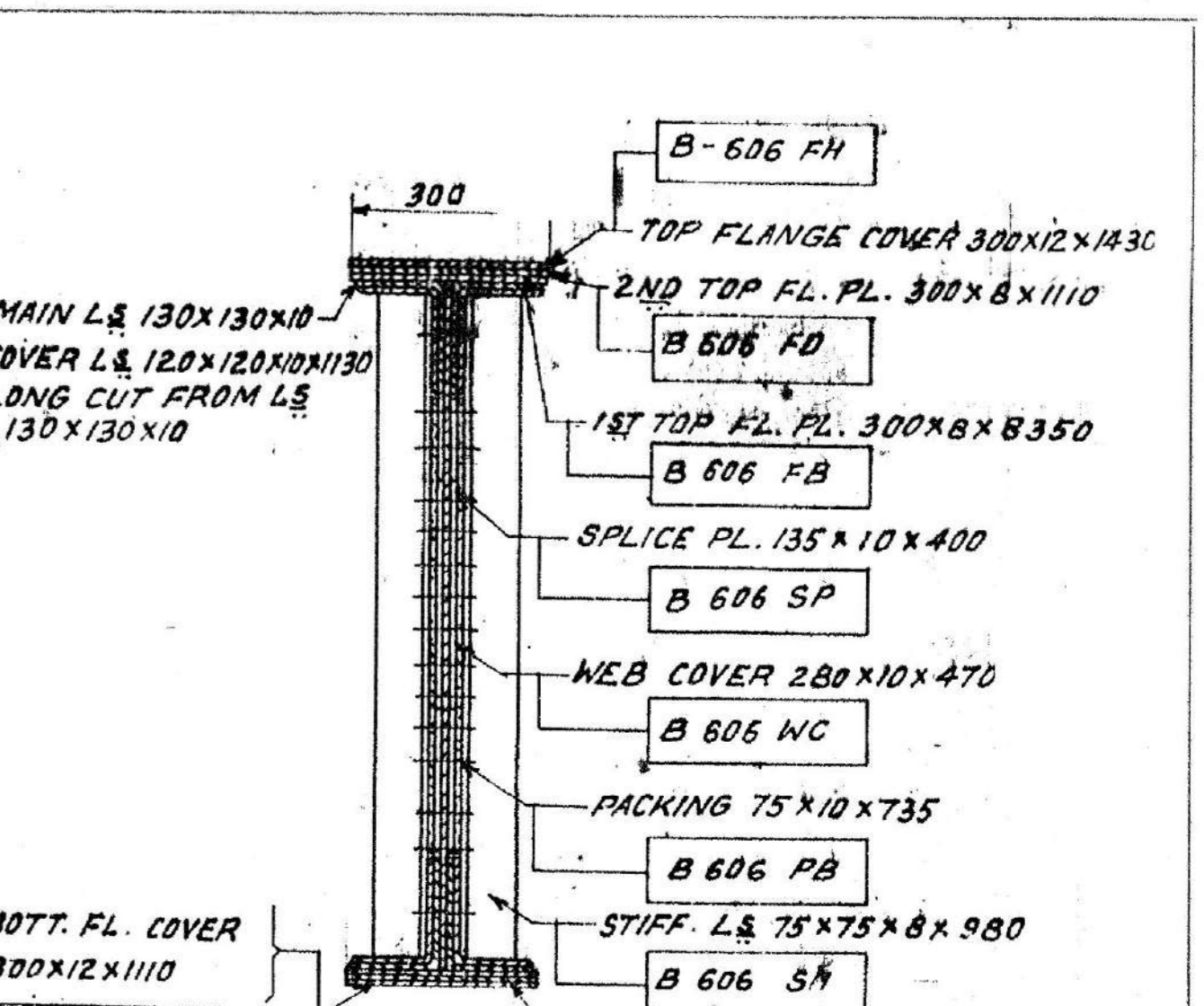
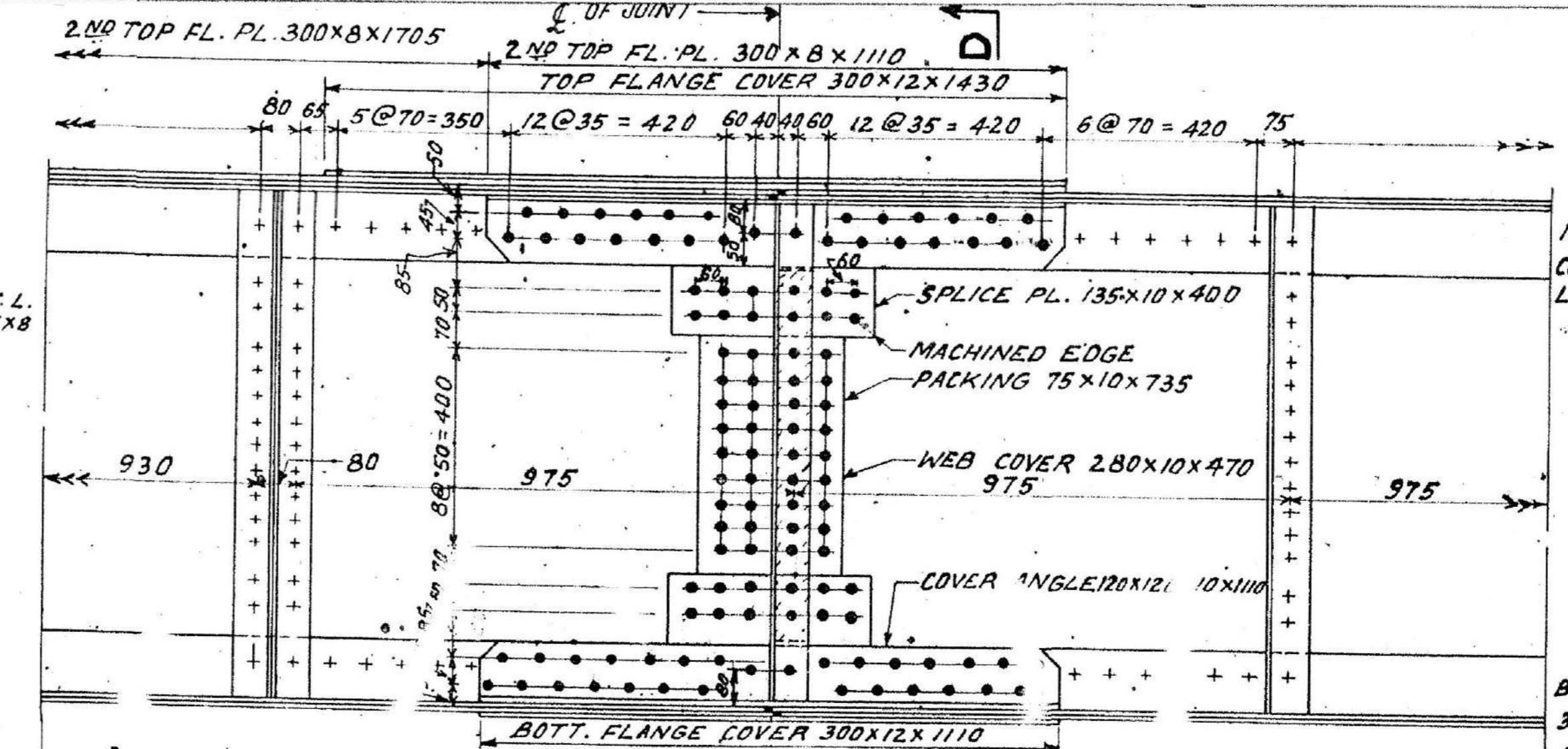
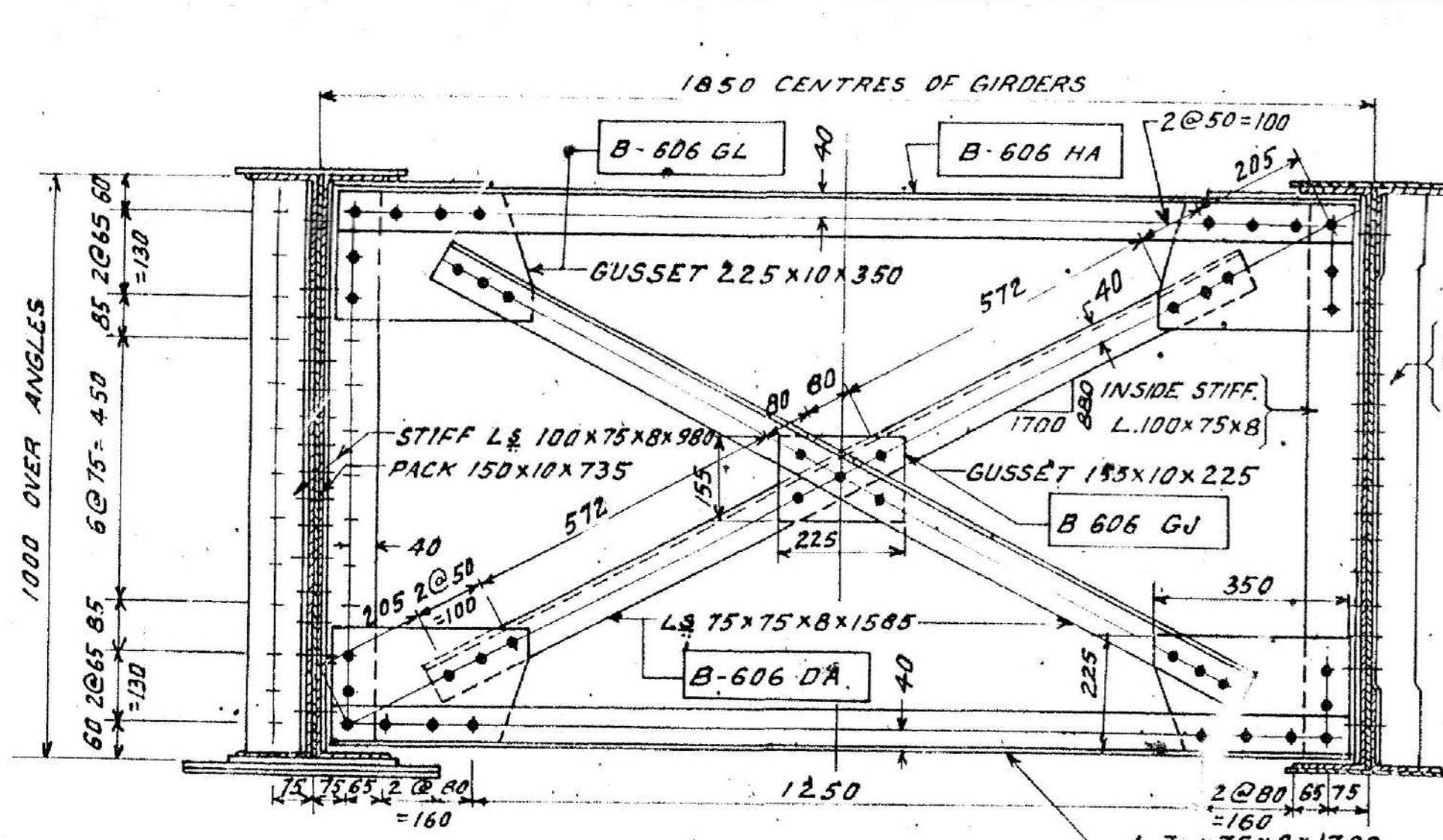
R. D. S. O.

B. G. M. L. STANDARD
3 x 9.2 m CONTINUOUS SPAN
GENERAL ARRANGEMENT

12-9-68

RDSO/B-606

CALCULATIONS REGISTER No.	DRAWN BY: [Signature]	TRACED BY: [Signature]	AD E (B&S)	JDS (B&S)
PAGES DONE BY: [Signature]	CHECKED BY: [Signature]			



DESCRIPTION	SECTION	LENGTH	N ^o REQD.	PART OR TEMPLATE N ^o
BEARING (A) & (D)				
BEARING PLATES	180x25	450	4	RA
BED PLATES	300x40	610	4	RC
LOCATION STRIPS	45x20	450	4	RE
"	45x20	180	8	RF
STIFFENING PLATES	180x25	450	4	RJ
STUDS	20 DIA.	-	8	
ANCHOR BOLTS	25 DIA.	420	16	
BEARING (B) & (C)				
BEARING PLATES	250x25	490	4	RB
KNUCKLE PLATES	250x12	540	4	RG
BED PLATES	410x10	710	4	RD
ANCHOR PLATES	107x28	200	8	RH
STIFF. PLATES	250x25	490	4	RK
ANCHOR BOLTS	25 DIA.	-	16	
C.S.K. BOLTS	20 DIA.	-	16	
STUDS	"	-	8	

ALL HOLES 21.5 DIA. FOR 20 DIA. RIVETS EXCEPT WHERE OTHERWISE SHOWN.

DESCRIPTION	RIVETS	
	SHOP	FIELD
SNAP HEAD	○	●
C.S.K. ON FAR SIDE	○	●
C.S.K. ON NEAR SIDE	○	●
C.S.K. ON BOTH SIDES	○	●
ANCHOR BOLTS	○	●
TURNED BOLTS	○	●

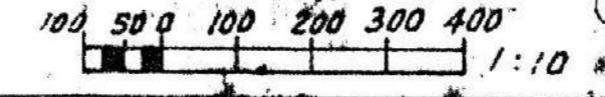
- ALL DIMENSIONS ARE IN MILLIMETRES.
- MACHINED SURFACES SHOWN THUS $\text{---}f$
- BED PLATES ARE DESIGNED FOR R.C. BED BLOCKS WITH 42.2 K_j/cm² PERMISSIBLE PRESSURE OR PLAIN CONCRETE WITH A CUBE STRENGTH OF 210 K_j/cm².

NOTE

CONSULTATION REGISTER NO. DRAWN BY TRACED BY CHECKED BY

SPECIFICATION

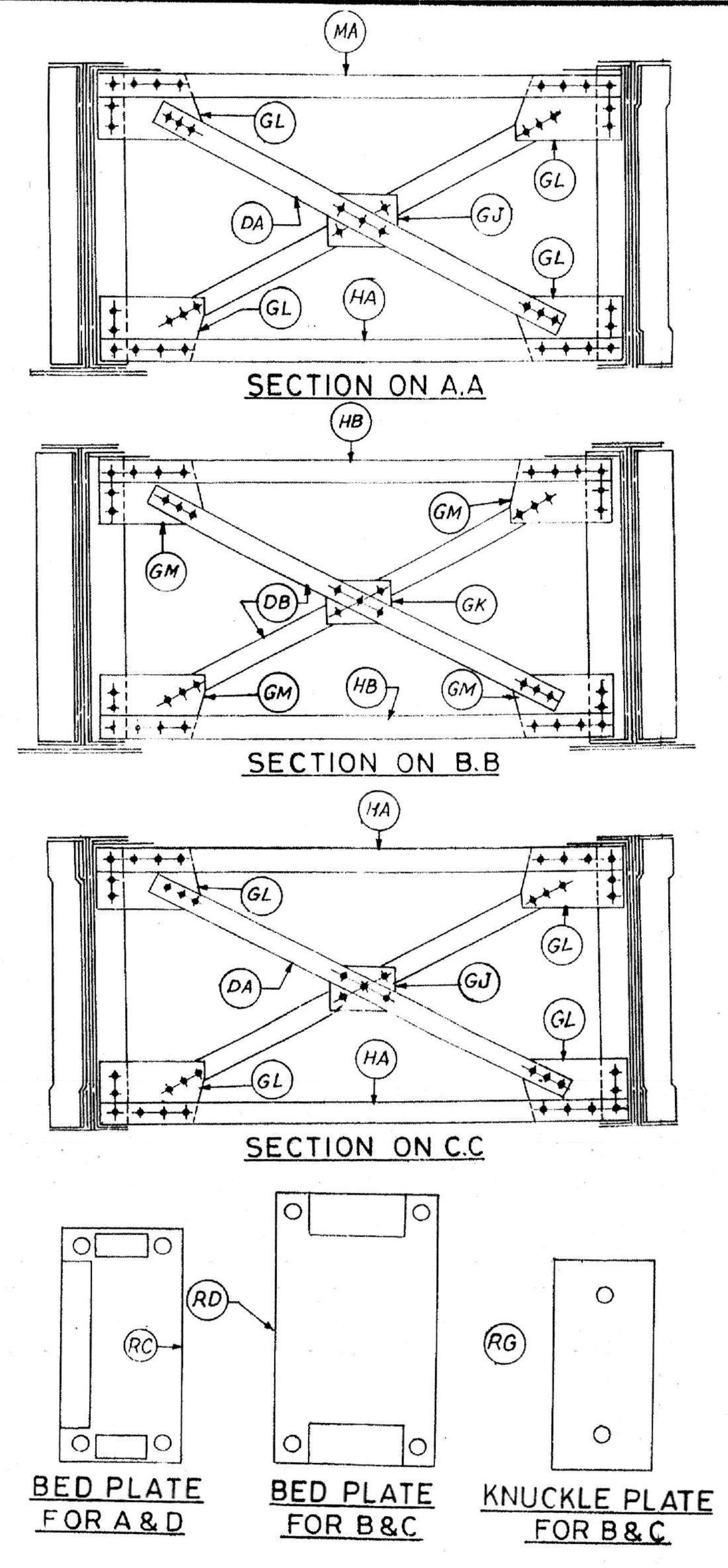
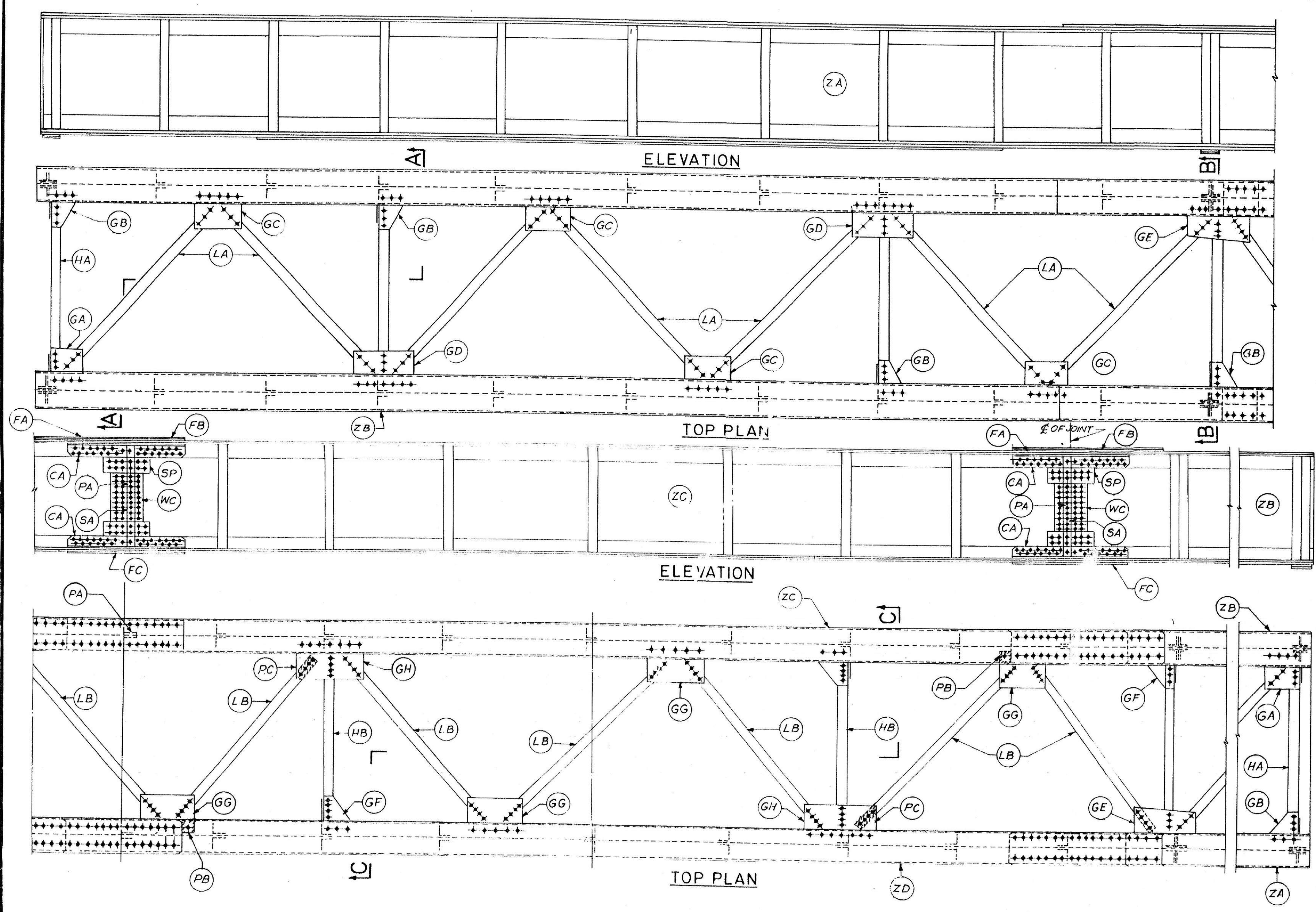
MILLIMETRES



1. FILLET WELD FOR LOCATION STRIP CHANGED FROM 6 TO 8mm FOR MBG LOADING. 2. 3. 93

ALT. DESCRIPTION DATE

R. D. S. O.
 B. G. M. L. STANDARD
 3x9.2m CONTINUOUS SPAN
 CROSS FRAME JOINT & BEARINGS
 12-9-68
 R.D.S.O. B-607



4. FIELD RIVETS SHOWN THUS.....
3. THE SHIPPING LIST SHOWN IS FOR 3 CONTINUOUS SPANS.
2. IN THE CASE OF A CONSIGNMENT OF GIRDERS OF DIFFERENT SPANS BEING DESPATCHED TOGETHER, IN ORDER TO FACILITATE SORTING, ALL GIRDERS OF A GIVEN TYPE WILL BE PAINTED A DISTINCTIVE COLOUR TO BE SPECIFIED BY THE INDENTOR.
1. SHIPPING MARKS ARE TO BE PAINTED IN WHITE LETTERS 100 mm HIGH (OR AS LARGE AS THE MEMBER WILL PERMIT) ON EACH MEMBER BEFORE DESPATCH FROM THE WORKS THUS.....(H)

NOTE

SPECIFICATION	SCALE	ALT.	DESCRIPTION	DATE
	NIL			

"THIS DRAWING IS THE PROPERTY OF RESEARCH DESIGNS AND STANDARDS ORGANISATION (MINISTRY OF RAILWAYS) LUCKNOW - 226011 - INDIA AND SHALL NOT BE USED, COPIED OR REPRODUCED IN PART OR WHOLE WITHOUT PRIOR CONSENT IN WRITING."

R. D. S. O
B. G. M. L. STANDARD
3x9.2 m CONTINUOUS SPAN
ERECTION DRAWING
12-9-68
RDSO/B-608

CALCULATIONS REGISTER NO.	DRAWN BY:-	TRACED BY:-		
PAGES	DONE BY:-	CHECKED BY:-	ADE (B&S)	JDS (B&S)
	CHECKED BY:-			

PART LIST

SHIPPING LIST

N ^o REQD	DESCRIPTION	PART OR TEMPLATE N ^o
4	WEB PLATES	B 606 ZA
2	" " "	B 606 ZB
4	MAIN ANGLES (TOP)	B 606 MA
2	" " "	B 606 MB
2	" " "	B 606 MC
8	" " (BOTTOM)	B 606 MD
2	" " (TOP)	B 606 ME
1	" " "	B 606 MF
1	" " "	B 606 MG
4	" " (BOTTOM)	B 606 MH
4	1 ST FLANGE PLATE (TOP)	B 606 FA
2	" " " "	B 606 FB
4	2 ND " " " "	B 606 FC
4	" " " " "	B 606 FD
4	1 ST " " " (BOTTOM)	B 606 FE
2	" " " " "	B 606 FF
4	2 ND " " " "	B 606 FG
4	FLANG COVERS (TOP)	B 606 FH
4	" " (BOTTOM)	B 606 FU
8	WEB COVERS	B 606 MC
16	SPLICE PLATES	B 606 SP
16	COVER ANGLES (TOP & BOT)	B 606 CA
8	STIFFENERS END (PACKED INSIDE)	B 606 SA
8	" " (OUTSIDE)	B 606 SB
8	" " PACKED INT SUPPORTS	B 606 SC
8	" " " " OUTSIDE	B 606 SD
6	" " INT PACKED & NOTCHED	B 606 SE
6	" " " "	B 606 SF
88	" " JGLD	B 606 SG
8	" " PACKED AT JOINT	B 606 SH
14	LATERALS (TOP)	B 606 LA
7	" " "	B 606 LB
2	LATERAL GUSSET (TOP)	B 606 GA
8	" " " " "	B 606 GB
8	" " " " "	B 606 GC
4	" " " " "	B 606 GD
2	" " " " "	B 606 GE
2	" " " " "	B 606 GF
4	" " " " "	B 606 GG
2	" " " " "	B 606 GH
16	X-FRAME HORIZONTALS	B 606 HA
4	" " " " "	B 606 HB
16	" " " " DIAGONALS	B 606 DA

N ^o REQD	DESCRIPTION	PART OR TEMPLATE N ^o
4	CROSS FRAME DIAGONALS (INT)	B 606 DB
8	" " " " GUSSETS (MIDDLE)	B 606 GJ
2	" " " " (INT)	B 606 GK
32	" " " " (TOP & BOT)	B 606 GL
8	" " " " " "	B 606 GM
16	PACKING SUPPORT STIFFENERS	B 606 PA
12	" " X-FRAME " "	B 606 PB
8	" " AT JOINT " "	B 606 PC
2	" " LATERAL GUSSET	B 606 PD
4	" " " " ANGLE	B 606 PE
4	BEARING PLATES FOR END SUPPORTS	B 606 RA
4	" " " " INT " "	B 606 RB
4	BED " " END " "	B 606 RC
4	" " " " INT " "	B 606 RD
4	LOCATION STRIPS FOR END " "	B 606 RE
8	" " " " " " "	B 606 RF
4	KNICKLE PLATES " " INT " "	B 606 RG
8	ANCHOR " " " " " "	B 606 RH
4	STIFFENING PLATES	B 606 RJ
4	" " " " "	B 606 RK
16	ANCHOR BOLTS FOR END SUPPORTS	B 003/M
16	" " " " " " INT " "	B 003/M
16	CSK BOLTS FOR INT SUPPORTS	B 003/M
8	STUDS FOR END SUPPORTS	
8	" " " " INT " "	

N ^o REQD	DESCRIPTION	SIZE			SHIPPING MARK
		L	B	D	
2	GIRDERS COMPLETE	11225	430	1061	(2A)
2	" " "	11225	430	1061	(2B)
1	" " "	8350	300	1048	(2D)
1	" " "	8350	300	1048	(2D)
8	WEB COVERS	470	280	10	(HC)
16	SPLICE PLATES	400	135	10	(SP)
16	COVER ANGLES (TOP & BOT)	1110	120	120	(CA)
4	2 ND FLANGE PLATE (TOP)	1110	300	8	(FA)
4	COVER PLATES (TOP)	1430	300	12	(FB)
4	" " (BOTTOM)	1110	300	12	(FD)
8	STIFFENERS AT JOINTS	380	75	75	(SA)
8	" " PACKING AT JOINT	735	75	10	(PA)
14	LATERAL ANGLES (TOP)	2040	75	75	(LA)
7	" " " " "	2040	100	75	(LB)
16	CROSS FRAME HORIZONTAL	1780	75	75	(HA)
4	" " " " "	1780	75	75	(HB)
16	" " " " DIAGONALS	1685	75	75	(DA)
4	" " " " "	1540	75	75	(DB)
2	LATERAL GUSSETS	270	300	10	(GA)
8	" " " " "	230	270	10	(GB)
8	" " " " "	270	385	10	(GC)
4	" " " " "	270	520	10	(GD)
2	" " " " "	320	560	10	(GE)
4	" " " " "	320	465	10	(GF)
2	" " " " "	320	610	10	(GH)
8	CROSS FRAME GUSSETS (MIDDLE)	225	155	10	(GJ)
2	" " " " (INT)	225	155	10	(GK)
32	" " " " (TOP & BOT)	350	225	10	(GL)
8	" " " " (INT)	350	225	10	(GM)
2	PACKING LATERAL GUSSETS	110	180	10	(PB)
4	" " " " "	290	75	10	(PC)
4	BED PLATES FOR END SUPPORTS	610	300	40	(RA)
4	" " " " INT " "	710	410	28	(RB)
4	KNICKLE PLATE " " "	540	250	12	(RG)
16	ANCHOR BOLTS FOR END SUPPORT	25 DIA.			
16	" " " " " " INT " "	25 DIA.			
8	STUDS FOR END SUPPORTS	20 DIA.			
8	" " " " INT " "	20 DIA.			

N ^o REQD	DESCRIPTION	SIZE			SHIPPING MARK
		L	B	D	

NOTE

SPECIFICATION

NIL SCALE

BS M 100 1000 MICRO FILMED COPY
ALT. DESCRIPTION DATE

R. D. S. O.

B. G. M. L. STANDARD
3 x 9.2 m CONTINUOUS SPAN
PART & SHIPPING LISTS

12-9-68

RD50/B-609

CALCULATIONS REVISION N^o _____ DRAWN BY Adam Singh TRACED BY Prem chand
DESIGNED BY S.K. Gokul CHHECKED BY S.K. Gokul
DESIGNED BY S.K. Gokul CHHECKED BY S.K. Gokul